

Firmware Upgrade Procedure

SAFARI™ Land Vehicular Terminal

Ver : 2.0

Date : 12 Nov 2012

TECHNICAL NOTE

Contents

Introduction	3
Setting Up	4 - 9
Technical Summary	10
Contact Details	11

TECHNICAL NOTE

Introduction

The SAFARI™ is a Land Vehicular BGAN terminal operating on the Inmarsat BGAN Satellite Network.

The SAFARI™ consists of three fully integrated units – an IP44 rated Transceiver Unit (TU) with built-in Wi-Fi, an IP66 rated Handset and an IP56 rated roof mounted Antenna Unit. The Antenna Unit is compact and lightweight, ideal for vehicles on-the-move. It has been designed for the most demanding environments and is easy to carry when travelling to various locations around the world.

It offers user standard voice, optional 3.1 KHz high quality voice/fax, high speed Streaming and Standard IP data service for various applications, including internet browsing, email and file transfer functions.

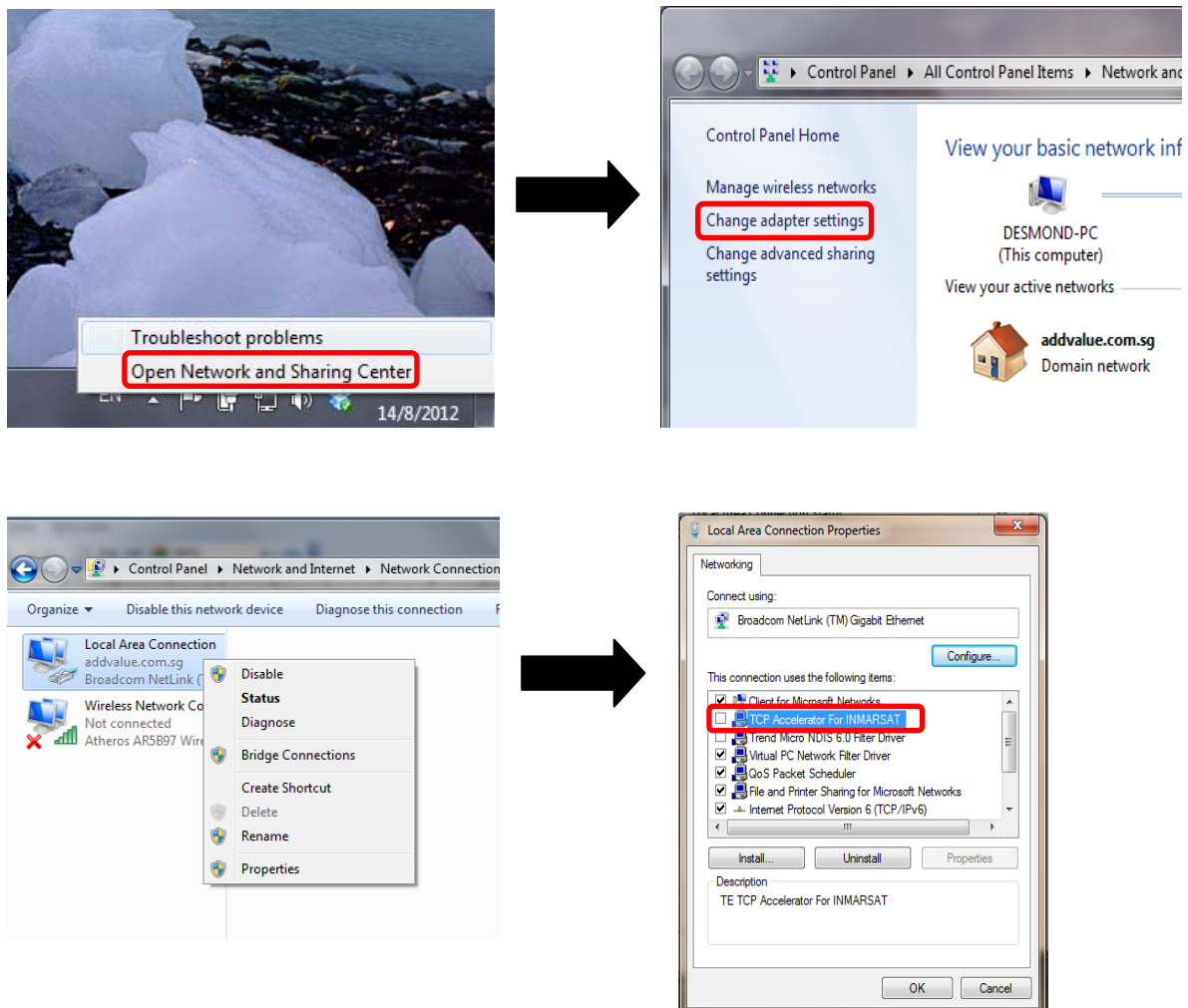
TECHNICAL NOTE

Setting Up

Before proceeding to firmware upgrade, it is a **MUST** to disable the TCP-PEP / Inmarsat TCP accelerator, and is highly recommended to shut down any application software related to BGAN/FBB. This is to prevent any hindrance during the upgrading.

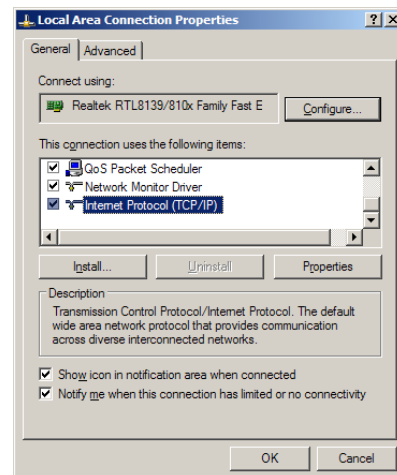
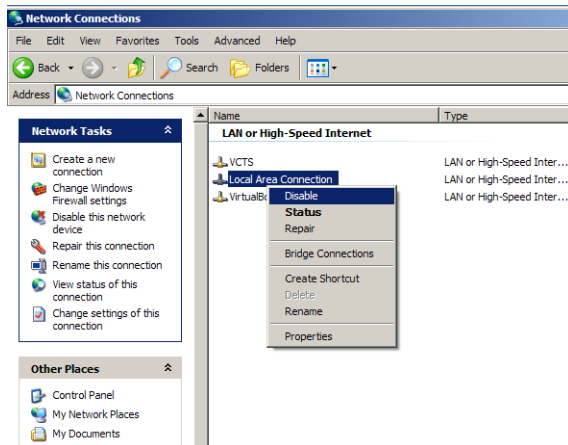
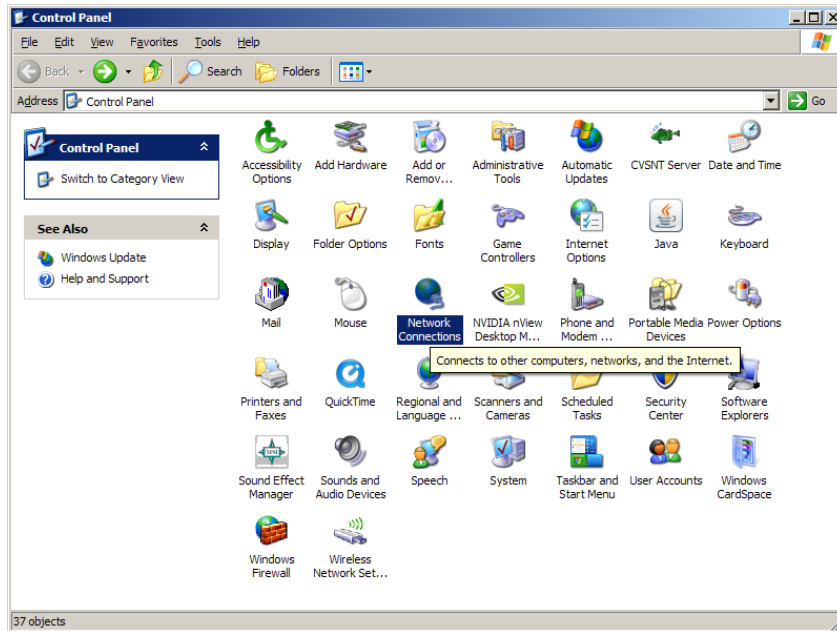
Disabling of TCP-PEP/ Inmarsat TCP Accelerator

For Window 7:



TECHNICAL NOTE

For Window XP:



TECHNICAL NOTE

Firmware upgrade can be done in two possible ways:

- (1) Using WebConsole in Normal Operating Mode
- (2) Using 'Safe Mode' by means of "Safe Mode Switch"

(1) Firmware Upgrade using WebConsole in Normal Operating Mode:

Step 1:

Navigate to Firmware Upgrade function in the Web Console

Settings > Admin > Firmware Upgrade



Step 2:

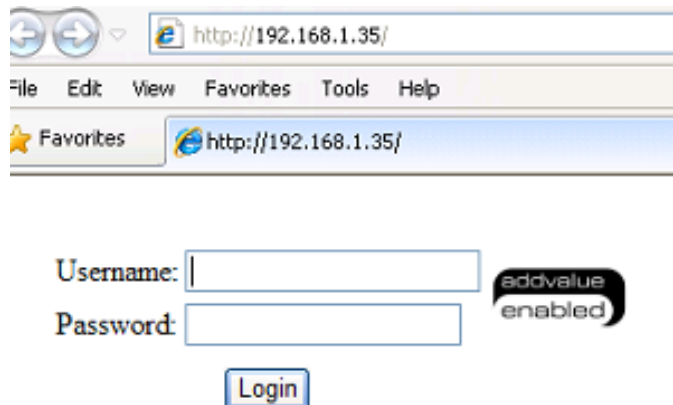
Click on "Firmware Upgrade".

SAFARI™ system will then automatically reboot in to SAFE mode. Wait for the SAFE mode WebConsole login page to appear. If you do not see the WebConsole login page appearing within 2 ~ 3 minutes, then refresh the webpage to get to the WebConsole login page.

TECHNICAL NOTE

Step 3:

Login accordingly using 'admin' username and the corresponding password ('1234' is the default password for 'admin')



Username:

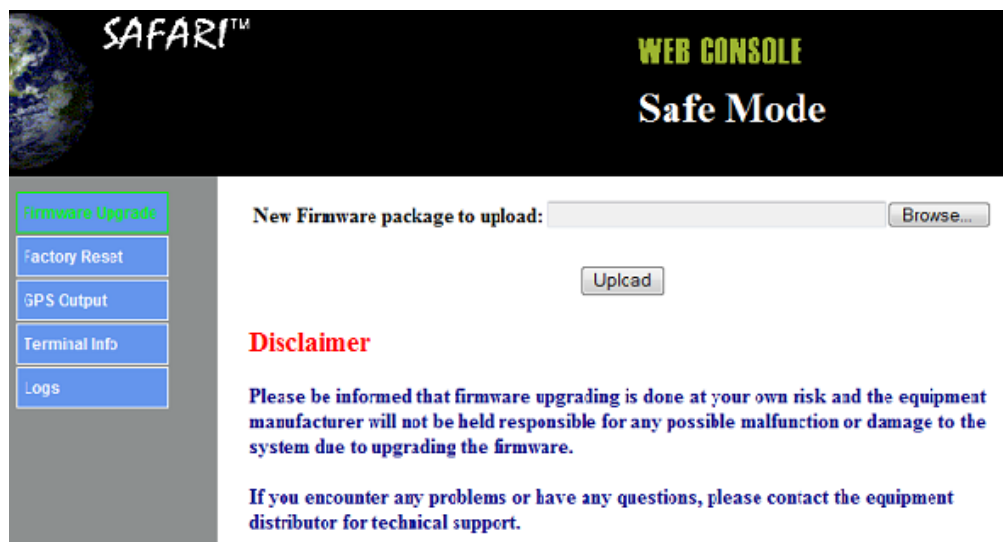
Password:

Login

addvalue enabled

Step 4:

Click on "Firmware Upgrade" and 'browse' for the latest firmware and 'upload' accordingly.



SAFARI™ **WEB CONSOLE**
Safe Mode

Firmware Upgrade

Factory Reset

GPS Output

Terminal Info

Logs

New Firmware package to upload:

Disclaimer

Please be informed that firmware upgrading is done at your own risk and the equipment manufacturer will not be held responsible for any possible malfunction or damage to the system due to upgrading the firmware.

If you encounter any problems or have any questions, please contact the equipment distributor for technical support.

TECHNICAL NOTE

(2) Firmware Upgrade via SAFE MODE, using 'SAFE Mode Switch':

Step 1:

Switch off the power of the SAFARI terminal. Use a sharp object such as pincer to depress the lever in the Safe Mode switch as shown below. Safe Mode Switch is located next to the SIM card holder.



Step 2:

Once the switch is depressed, power on the terminal using the On/Off switch. You will notice that the 3 LED Indicators turning AMBER in colour within 5sec.



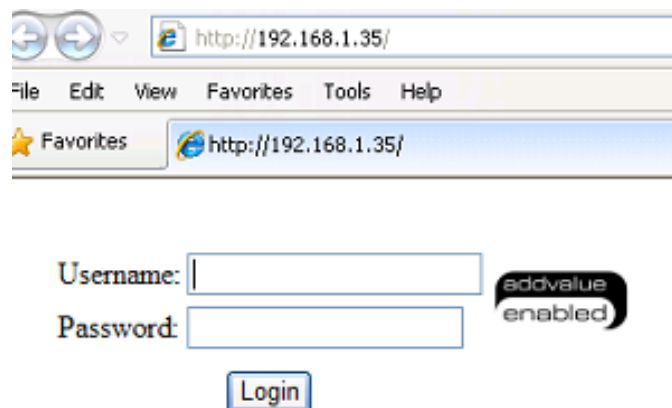
Step 3:

Wait for another 15-20 seconds, you will notice that the LED Indicators will start blinking.

TECHNICAL NOTE

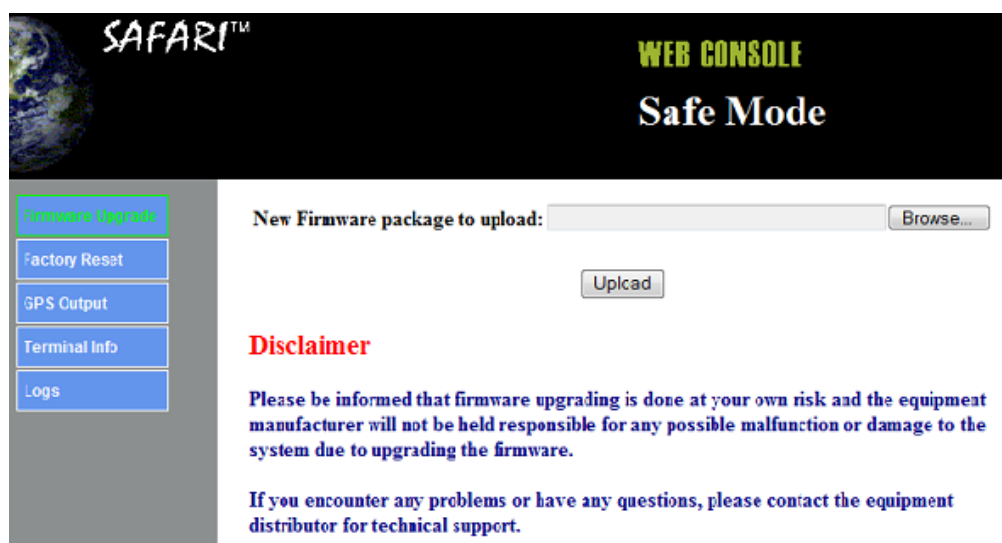
Step 4:

Login to the web console using the default IP address: <http://192.168.1.35> using 'admin' username and the corresponding password ('1234' is the default password for 'admin')



Step 5:

Click on "Firmware Upgrade" and 'browse' for the latest firmware and 'upload' accordingly.



TECHNICAL NOTE

Technical Summary

Certificate of Compliance

Inmarsat Fleetbroadband Type Approval
Compliant to RoHS, WEEE Logo
FCCertification Mark: FCC, CE, IC
Wi-Fi compliant IEEE 802.11b/g
GMPCS MoU - ITU Registry

Operating Frequency

Transmit 1626.5MHz - 1660.5MHz
Receive 1525MHz - 1559MHz

BDU - ADU RF Cabling Max Loss

12dB at 1.6GHz and 4 ohm DC loop resistance

Services:

Voice : 4kbps AMBE+2
Fax : 3.1KHz audio (64kbps) (>45° elevation)
Streaming IP : 32,64 or 128kbps (send and receive)
Standard IP : Up to 448/464kbps (send and receive)
SMS up to 160 characters (3G standard)

Router Functions

Single User Router Mode : NAT disabled, with option
(Modem Mode) to enable/disable DHCP
Multi-User Router Mode : NAT enabled, with option
to enable/disable DHCP

Interfaces

2 x RJ45 Ethernet ports (One is Power over Ethernet (PoE) port)
1 x Primary Handset Connector
1 x GPS Output Connector (MMEA-0183, Offset latch RJ11)
: BDU : TNC Female
1 x Antenna Connector ADU : TNC Female
2 x Standard Phone port (RJ11) for Fax and Phone
1 x SIM Card Slot
1 x Ground Stud connector
1 x GPIO Signal port connector
1 x Safe Mode switch
1 x Circuit Breaker switch
1 x WLAN 802.11b/g built-in

Power Supply

DC Input (Isolated) : +12V / 24V
Power (Max) : 60W

Physical Data

: BDU : 340 x 253 x 61.5 mm
: 13.4 x 10.0 x 2.4 in
ADU : 252mm (Dia) x 119.12mm (H)
Dimensions : 9.9 in (Dia) x 4.7 in (H)
: BDU : 3.5 Kg / 7.7 lbs
Weight ADU : 1.9 Kg / 4.2 lbs

Environment Conditions

BDU :

Operating Temperature : -25°C to +55°C
Storage Temperature : -40°C to +80°C
Operating Humidity : 95% (Condensing at 40°C)
Ingress Protection : IP44

ADU:

Operating Temperature : -25°C to +55°C
Storage Temperature : -40°C to +80°C
Operating Humidity : 95% (Condensing at 40°C)
Ingress Protection : IP65

Primary Handset

Display : 2 in, 220 x 176 pixel TFT,
65K Color LCD
Dimensions : 142 x 56 x 22 mm
: 5.6 x 2.2 x 0.9 in
Weight : 390g / 0.8 lbs
Protection Class : IP66
Operating Temperature : -25°C to +55°C
Storage Temperature : -30°C to +70°C

TECHNICAL NOTE

Technical Support Contact Details

Addvalue Communications Pte Ltd

Email: support@wideye.com.sg
Phone: +65 98201820
Web: <http://www.wideye.com.sg>