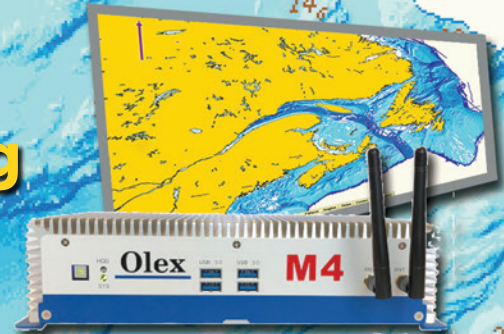


# Olex

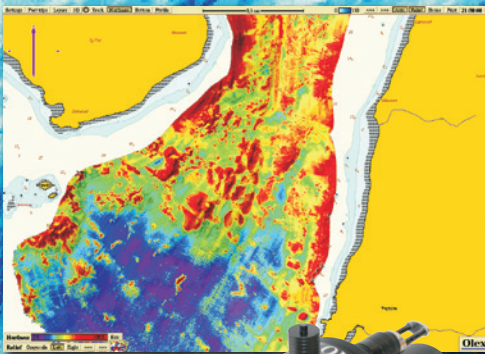
[www.olex.no](http://www.olex.no)

## The Best Seafloor Mapping and Fishing Tool Available

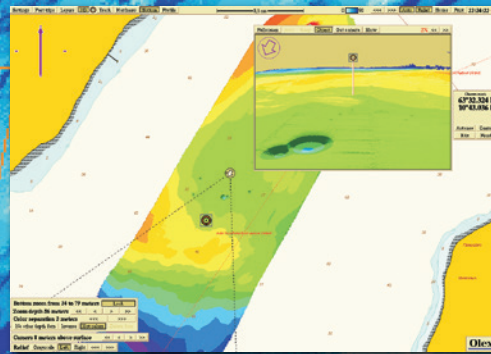


## 3D Mapping & Plotting System Fishing, Seafloor Mapping and Navigation

- ✓ Maximize Fishing Efficiently & Minimize Gear Damage
- ✓ Find New Uncharted Fishing Grounds
- ✓ Map the Seafloor Bottom Easily And Accurately
- ✓ Shared Seafloor Database Available
- ✓ Free Software Updates
- ✓ Import User Points from Other Plotting Software



Optional  
ATEC 200  
& 400  
Multibeam  
Sonar



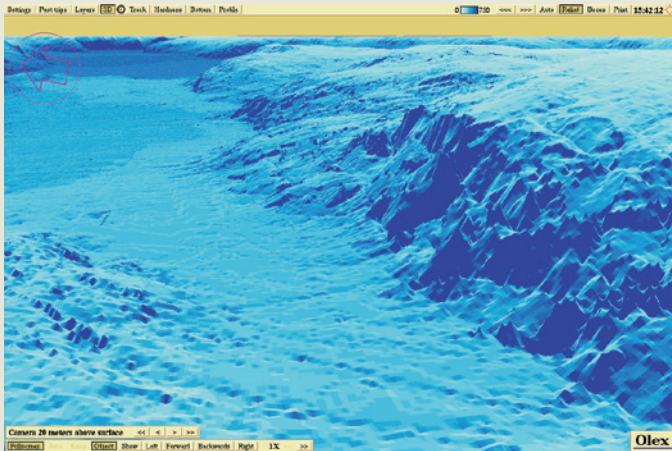
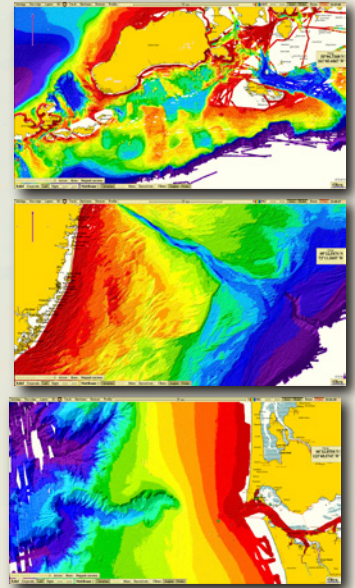
Using the Official Olex M  
Series Fan-Less Computer,  
with Solid-State Hard  
Drive. No moving parts,  
12/24 volt operation.



# Map the World with Olex

For more information on Olex please visit [www.olex.no](http://www.olex.no).

- Access to the Most Accurate and Extensive Fishing Map in the World.
- Continuously Improving the Seabed Map, the Olex System will Never Render Itself Obsolete with their FREE Software Upgrade Policy.
- Save Fuel, Reduce Sea Time, Reduce Habitat Damage, Improve Efficiency. Very Important Especially in a Quota-Based Fishery.
- Avoid Costly Hookups, Now you can Fish where you didn't Dare to in the past.
- Compatible with Most Standard Echosounders, Radars, Autopilots.
- Dedicated , Solid State Hardware, DC or AC Powered Operation.
- Option to have Bottom Hardness available to use as a tool.
- Optional Weather Forecast System with automatic GRIB file download.



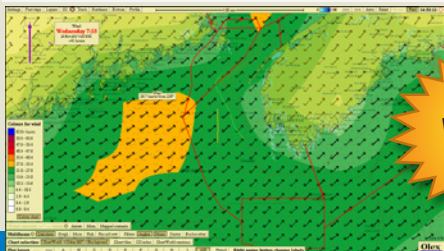
Olex is a chart plotter that combines ENC navigation and fisheries plotting, with realtime seabed mapping and 2D/3D visualization. The system was created in 1997. It is used by more than 7000 professional fishing vessels worldwide. 500 users are added every year.

***Olex exists because fishermen need more knowledge about the seabed than ENCs can provide.***

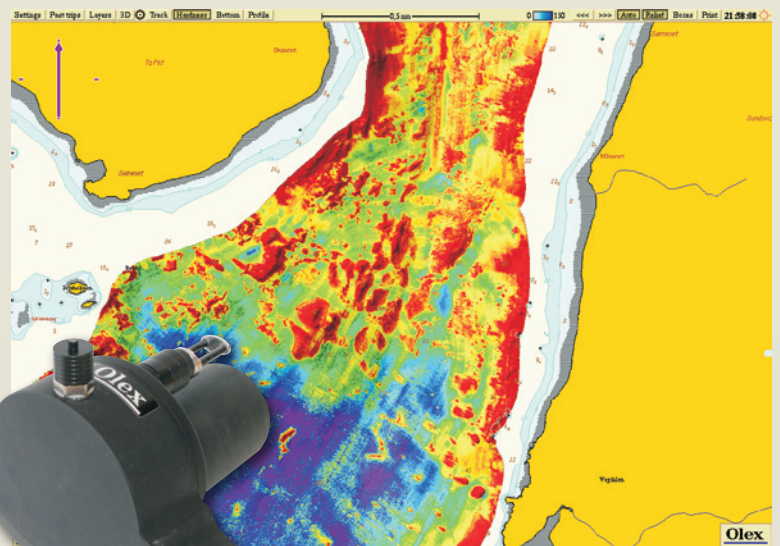
With Olex they create their own detailed maps.

***Olex bathymetry is referenced in 124 scientific papers and ~1700 citations.***

The quality of the Olex dataset is ensured by massive oversampling and statistical cleaning. Densely mapped areas approach the quality of hydrographic multibeam surveys, even though the data is collected by simple fishing vessels.



**GRIB  
Weather  
Feature**



 **Mackay**  
MARINE  
[www.mackaymarine.com](http://www.mackaymarine.com)

#### CANADA

St. John's, NL 709.726.2422  
Yarmouth, NS 902.742.3423  
Halifax, NS 902.468.8480  
Barrington, NS 902.575.2025  
Quebec City, QC 418.614.0782  
Vancouver, BC 604.435.1455

#### USA WEST

Seattle/Tacoma, WA 253.922.6260

#### USA EAST

Halifax, NS 902.468.8480

[olex@mackaymarine.com](mailto:olex@mackaymarine.com)  
[facebook.com/mackaymarinecanada](https://facebook.com/mackaymarinecanada)