

TECHNICAL INFORMATION  
FROM  
MARINE SATELLITE COMMUNICATIONS GROUP

Subject : Information on software release (BDE-App version 02.31)

Equipment : JUE-501, Inmarsat FB500  
: JUE-251, Inmarsat FB250

Date : October 30, 2019

Issue Number : SC-0009-19



---

M. Akatsuka  
Manager & Group Leader  
Marine Satellite Communications Group  
Marine Electronics Engineering Department  
Marine System Division

Priority [    ] A: Carry out immediately  
           [ X ] B: Carry out at periodical inspection  
           [    ] C: Carry out upon client's request  
           [    ] D: Information and news

# 1. Subject

Information on software release (BDE-App 02.31)

# 2. Objective Equipment

JUE-501 and JUE-251

Note: The equipment after the following serial number have been already updated to BDE-App 02.31 at the factory:

JUE-501 BDE : GV50777

JUE-251 BDE : GV50184

# 3. Information and Notice

## 3.1. Functions added and improved

Please be informed that the new software BDE-App 02.31 adds and improves the following functions.

BDE-App 02.31

### • Functions added:

- 1) Added the function to monitor the status of power supply (PSU unit) in BDE (JUE-501 and JUE-251).

The new status information (normal or abnormal) allows to determine power line failure due to short-circuit mode, when power is not applied to the equipment connected to BDE (ADE, Handset, external Buzzer, VDB, PoE equipment) normally.

If the power is not applied to them and the status is abnormal, check the status again after turning on the BDE without connecting any equipment or cables.

- if the status changes to normal, the cause of the failure is the equipment including the cables and wire connection.
- if the status remains abnormal, replace the PSU unit (the PSU unit will be stocked by the end of this December).

Refer to attached release note for the details of the function.

- 2) Added the self-diagnostic function of TEL ports (JUE-501 and JUE-251).

The self-diagnostic allows to determine the cause of the failure of the integrated circuit in BDE controls the TEL ports, when the telephone connected to TEL1 - TEL6 port is not working properly.

If the telephone does not work, disconnect the cable and the telephone from the BDE and turn on the power. Then check that the "Self Test" event is recorded or not in the Event Log.

- if the event is recorded and the status of the TEL port is abnormal, replace the BDE or use the other unused TEL port as an emergency procedure.
- if the event is not recorded, the cause of the failure is the telephone including the cables and wire connection.

Refer to attached release note for the details of the function.

JQS-2170 [0] Form 4 (3/3)

- Functions improved:

- 1) Removed the behavior that ADE returns the starting line at the start of satellite search to reduce ADE mechanical impact noise by the behavior (JUE-501).
- 2) Improved the issue that the ADE sensor manual calibration fails rarely (JUE-251).
- 3) Reduced the shutdown time when the power is turned off (JUE-501 and JUE-251).
- 4) Ease the conditions for valid GPS heading value used during backup mode of the satellite tracking (JUE-501 and JUE-251).

### 3.2 Request for updating the software

Before updating JUE-501 and JUE-251 software, please read through the following procedure and notice:

**Notice**

We recommend making a backup copy of all the setting by using “Export” function on the Web menu.

- Download the new software and release note from Production Information in the Marine Service Department web site, JRC/Alphatron Marine (<http://jrc.am/>) or Inmarsat (refer to release note for the URL).
- Refer to the release note for updating procedure of the software version.
- The software includes ADE software. ADE software is also updated when updating from BDE-App 02.23 or older software version.

### 4. Document attached

- JUE-501/JUE-251 BDE-App 02.31 release note (7ZPSC0689)
- JUE-501/JUE-251 Software Version List

### 5. Related Service news and/or Technical Information

None

## **JRC FB500/FB250 terminal JUE-501/JUE-251**

### **New software version 02.31 release**

JRC has released new software version, APP 02.31 for FleetBroadband JUE-501 and JUE-251 mobile terminals.

#### **Changes from APP 02.23 to 02.31**

---

Following functions have been improved and added:

Functions improved;

- Removed the behavior that ADE returns the starting line at the start of satellite search to reduce ADE mechanical impact noise by the behavior (JUE-501).
- Improved the issue that the ADE sensor manual calibration fails rarely (JUE-251).
- Reduced the shutdown time when the power is turned off (JUE-501 and JUE-251).

Maintenance functions added;

- Added the function to monitor the status of power supply (PSU unit) in BDE (JUE-501 and JUE-251).  
Refer to p.16 for the details of the function.
- Added the self-diagnostic function of TEL ports (JUE-501 and JUE-251).  
Refer to p.19 for the details of the function.

## **Software updating procedure**

---

Update JUE-501/251 software to APP 02.31 with following procedure a) to d).

\* Do not connect any router or other equipment when updating JUE-501/251. Also, PC must be on the same network as JUE-501/251.

### **a) Confirm the connection**

JUE-501/251 software updating needs a PC.

Prepare a PC and connect it to your JUE-501/251. (For details, refer “[1. Confirm the connection](#)”)

\* Windows XP/Vista/7/10 OS is required.

### **b) Download the latest software for JUE-501/251**

Confirm the website to check whether the latest software is uploaded or not, from the PC connected to Internet. Download if the latest software is uploaded. (For details, refer “[2. Download the software for JUE-501/251](#)”)

### **c) Update/Downgrade JUE-501/251 software**

Update the JUE-501/251 software by the downloaded software. (For details, refer “[3. Update JUE-501/251 software](#)”)

Also, downgrade the JUE-501/251 software by the stored software [JUE251-501\_APP\_xxxx.jrc] in the attached CD-ROM, when necessary. (For details, refer “[[Reference](#)] Software downgrading procedure” in last page)

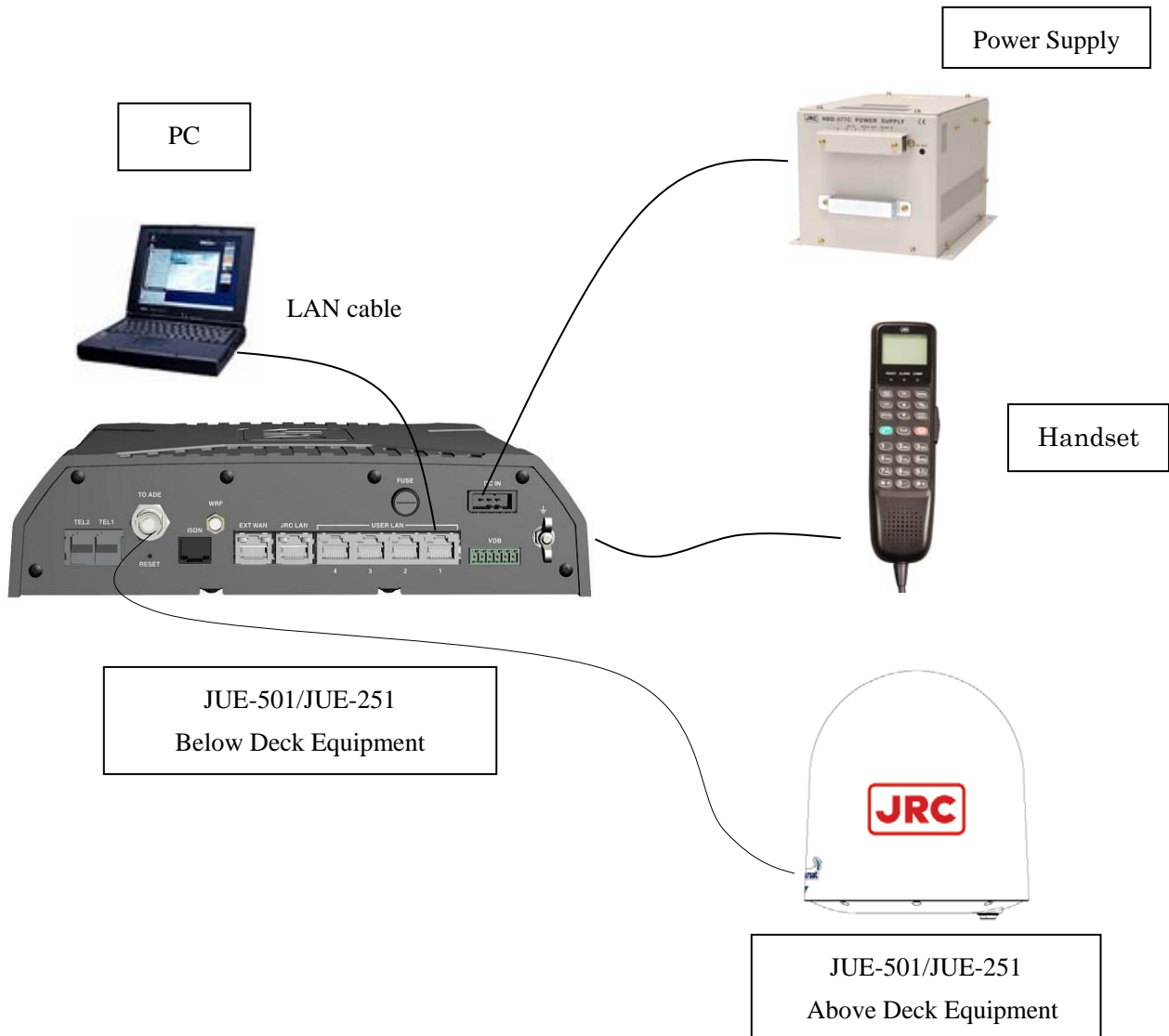
### **d) Confirm the updated software version**

Confirm the software version after updating, to check that JUE-501/251 software is correctly updated or not. (For details, refer “[4. Confirm the updated software version](#)”)

### 1. Confirm the connection


(1) Prepare a PC and connect it directly to a User LAN port of JUE-501/251.


\* Do not connect any router or other equipment between JUE-501/251 and a PC when updating JUE-501/251. Also, PC must be on the same network as JUE-501/251.

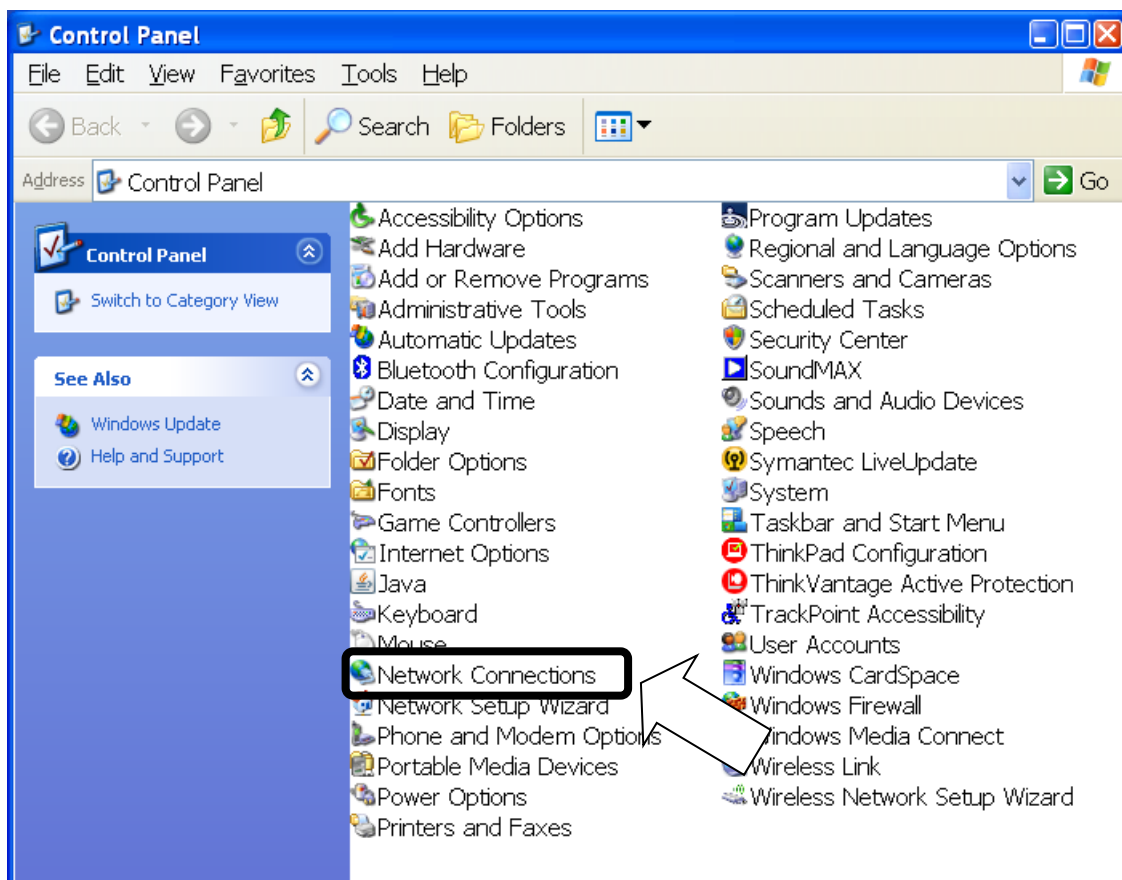


- (2) Set the LAN port IP address (being connected to User LAN port of JUE-501/251) of your PC, to be on the same network as JUE-501/251 by the following procedure.

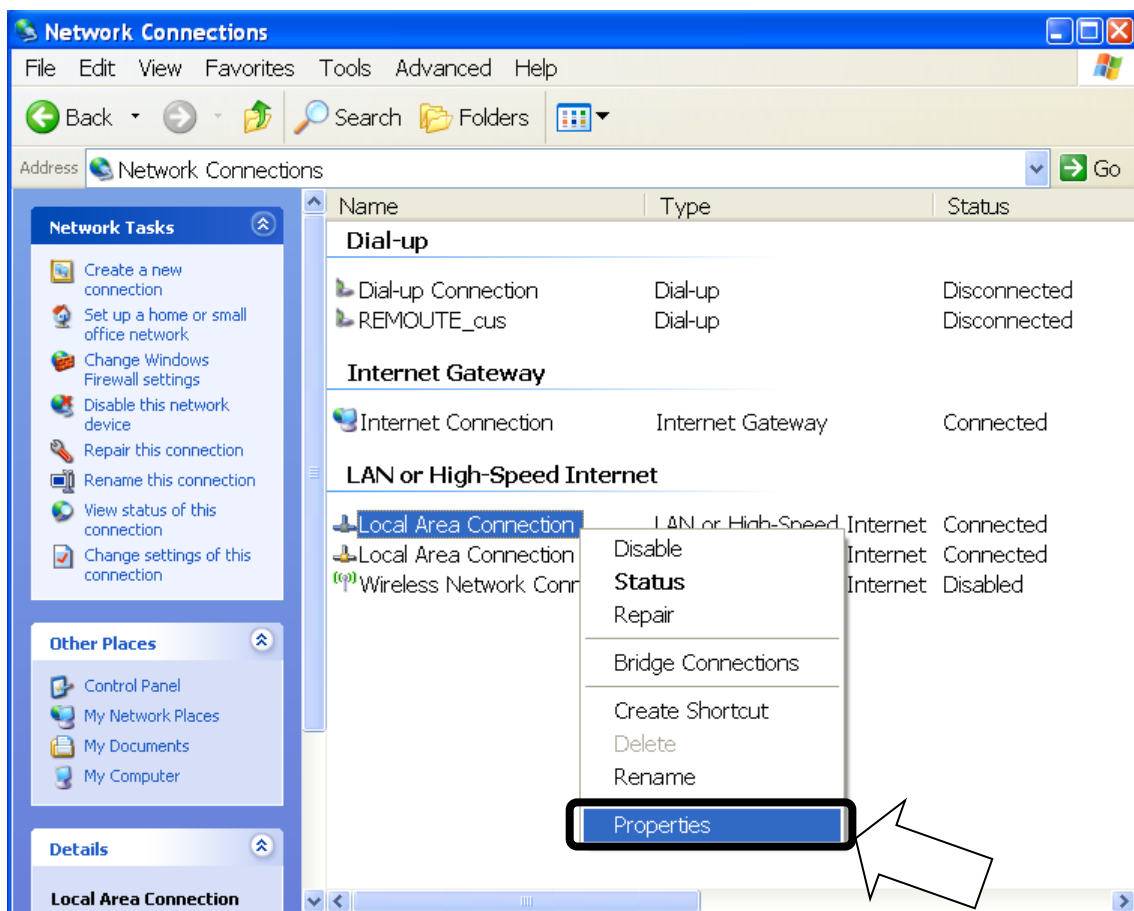
NOTE

- Skip this procedure when you already set the LAN port to DHCP (set the IP address setting as [Obtain an IP address automatically]) and BDE's DHCP setting enable.
- Current BDE's DHCP setting can be referred at the Handset menu, <9> Admin - Input secret code (initial value 0001) - <3> Port - <3> Ethernet - <1> User LAN - BDE's IP address (press OK) - BDE's subnet mask (press OK) - DHCP setting. Press  (on hook) button and close the menu after you confirm the DHCP setting.

- Confirm BDE's IP address from the Handset.
  - BDE's IP Address can be referred at the Handset menu, <9> Admin - Input secret code (initial value 0001) - <3> Port - <3> Ethernet - <1> User LAN. Press  (on hook) button and close the menu after you confirm the IP address.
- Select [start]-[Control Panel] on your PC.
  - [Control Panel] window is displayed.

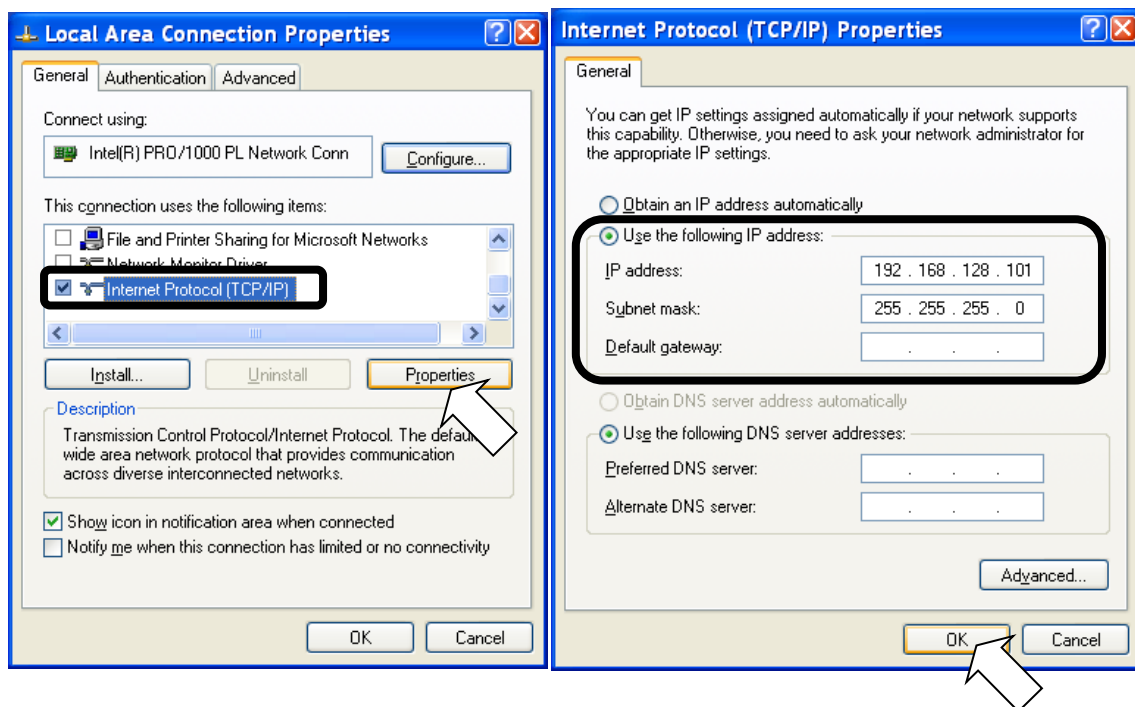


- iii). Double click [Network Connections].
  - [Network Connections] window is displayed.
- iv). Select [Local Area Connection] and right-click, then click [Properties] from displayed menu.
  - [Local Area Connection Properties] dialogue box is displayed.
  - Confirm that [General] tab is displayed on the front of the screen.





- v). Select [Internet Protocol (TCP/IP)] and click [Properties] button.
  - [Internet Protocol (TCP/IP) Properties] dialogue box is displayed.
  - Select [Use the following IP address] and input [IP address] and [Subnet mask] to be on the same network as JUE-501/251. Do not input any IP address for [Default gateway].
    - e.g. When the BDE's IP address is 192.168.128.100
    - Input 192.168.128.101 for [IP address] and 255.255.255.0 for [Subnet mask].
  - Select [Use the following DNS server addresses] and do not input any DNS addresses for [Preferred DNS server] and [Alternate DNS server].



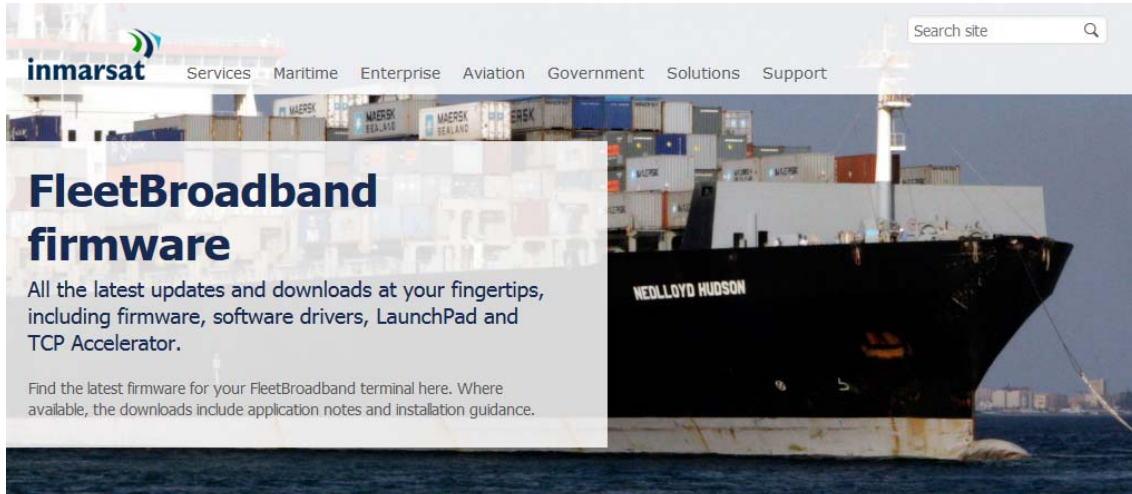
- vi). Click [OK] button.
  - Screen is returned to [Local Area Connection Properties] dialogue box.
- vii). Click [OK] button.
  - If message of rebooting is displayed, reboot a PC.

## 2. Download the latest software for JUE-501/251


The latest software of JUE-501/251 is uploaded on the HP of Inmarsat.


The URL is as follows:


<https://www.inmarsat.com/support/fleetbroadband-firmware/>



Manufacturer	Terminal(s)	Version	OS	Size	Download
PC Mac					
<b>WIDEYE</b>					
	iFleetONE	R01.0.2	X X	9.63MB	<a href="#">zip</a>
	Skipper 150	1.7.0	X X	8.73MB	<a href="#">zip</a>
	FX 150	2.0.3	X X	8.35MB	<a href="#">zip</a>
	FX 250	2.0.4	X X	8.41MB	<a href="#">zip</a>
	FX 500	2.0.4	X X	8.41MB	<a href="#">zip</a>
<b>JRC</b>					
	JUE-250	01.31	X	5.43MB	<a href="#">zip</a>
	JUE-500	11.44	X	7.41MB	<a href="#">zip</a>
	JUE-251	02.03	X	12.39MB	<a href="#">zip</a>
	JUE-501	02.03	X	12.39MB	<a href="#">zip</a>
<b>Satlink</b>					
	Satlink 150	1.7.0	X X	7.85MB	<a href="#">zip</a>
	Satlink 250	1.7.2	X X	7.80MB	<a href="#">zip</a>
	Satlink 250+	1.7.3	X X	7.94MB	<a href="#">zip</a>
<b>Thrane &amp; Thrane / Cobham SATCOM</b>					
	FleetOne SAILOR 150, 250 and 500	1.24	X X	6.93MB	<a href="#">zip</a>
	IP handset	1.17	X X	11MB	<a href="#">zip</a>


**Contact support**  
 Need assistance? Get in touch with our Customer Service team


**Partner search**  
 Find a service provider


**Subscribe**  
 Stay up to date with news and information from Inmarsat

### FleetBroadband firmware

[FleetBroadband LaunchPad](#)

[FleetBroadband TCP Accelerator](#)

If the software's version on the HP is larger than the JUE-501/251's software version, download the software from HP.

Software version of JUE-501/251 main unit can be displayed on Handset screen with following operation:

<1> Status - <5> Unit Info - <2> Mainte No.- BDE-App

### 3. Update JUE-501/251 software

Note

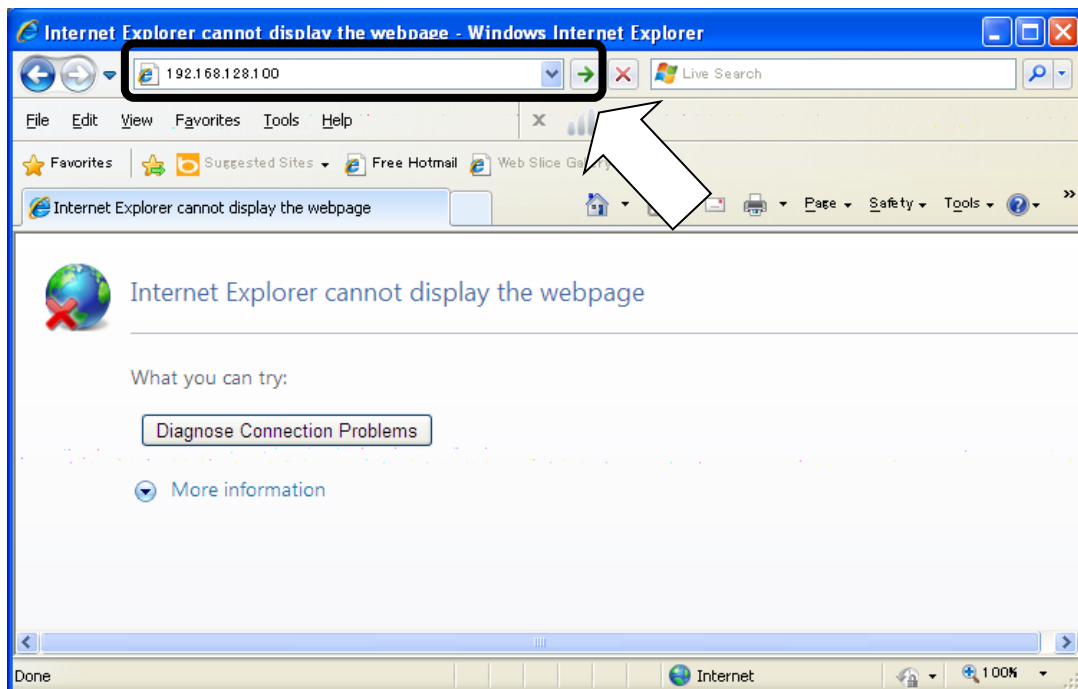
- Do not turn OFF the power supply of JUE-501/251 and/or PC during the software forwarding or updating
- Software forwarding or updating takes up to 3 minutes.

- (1) Activate your JUE-501/251 and confirm that initialization is completed.

\* [Initialize] is displayed during initialization on the Handset screen.


Initialize

- (2) Launch your Web browser\*<sup>1</sup> and enter the IP address of JUE-501/251 to the URL box. Then press [Enter] key.



Confirm the IP address of JUE-501/251 from the Handset.

- BDE's IP address can be referred at the Handset menu, <9> Admin - Input secret code (initial value 0001) - <3> Port - <3> Ethernet -<1>User LAN

Press  on hook button and close the menu after you confirm the IP address.

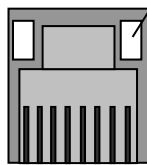
\*<sup>1</sup> While JUE-501 / JUE-251 officially supports Microsoft Internet Explorer7 and Mozilla Firefox3.6, their upper version can be available when they have compatible system.

**[\*] If the WEB menu won't open**

If the WEB menu won't open, check the both IP addresses of JUE-501/251 and your PC and confirm they are on the same network.

- The IP address of JUE-501/251 can be confirmed by (i) of [1.Confirm the connection].
- The IP address of PC can be confirmed by (ii) of [1.Confirm the connection].

If the WEB menu won't open with the correct IP address setting, check the User LAN port LED on back panel. Link LED will blink when the link between PC and the User LAN port is established.

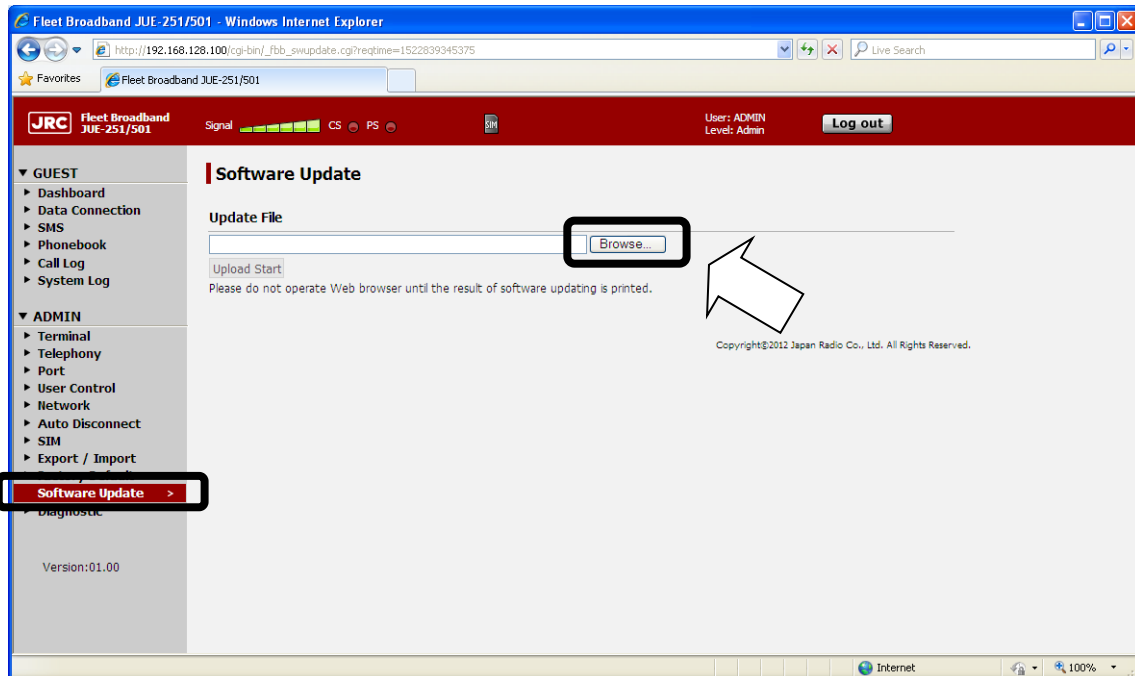


**Link LED:**

Blink when the link with the connected terminal has been established.  
(The color is orange for 10Base-T and green for 100-Base-T.)

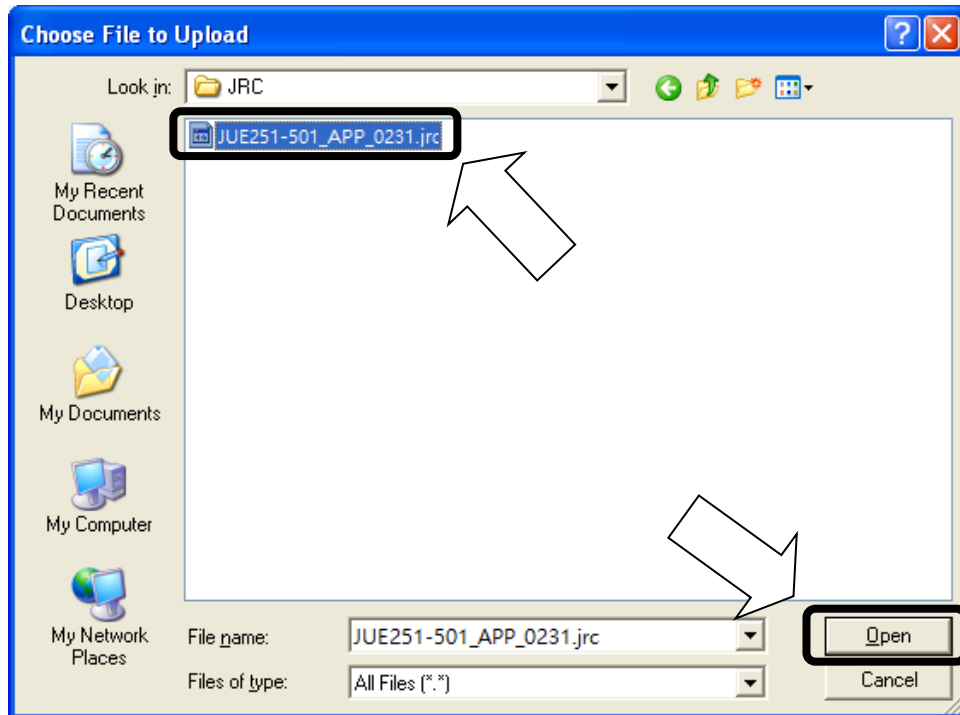
Link between PC and the User LAN port has not been established when the Link LED doesn't blink. Disconnect and connect the LAN cable again.

- (3) Click [Software Update] on the left [menu] panel, after login by Admin level (User: ADMIN / Secret Code: 0001 (Default) ). [Software Update] screen will be displayed.

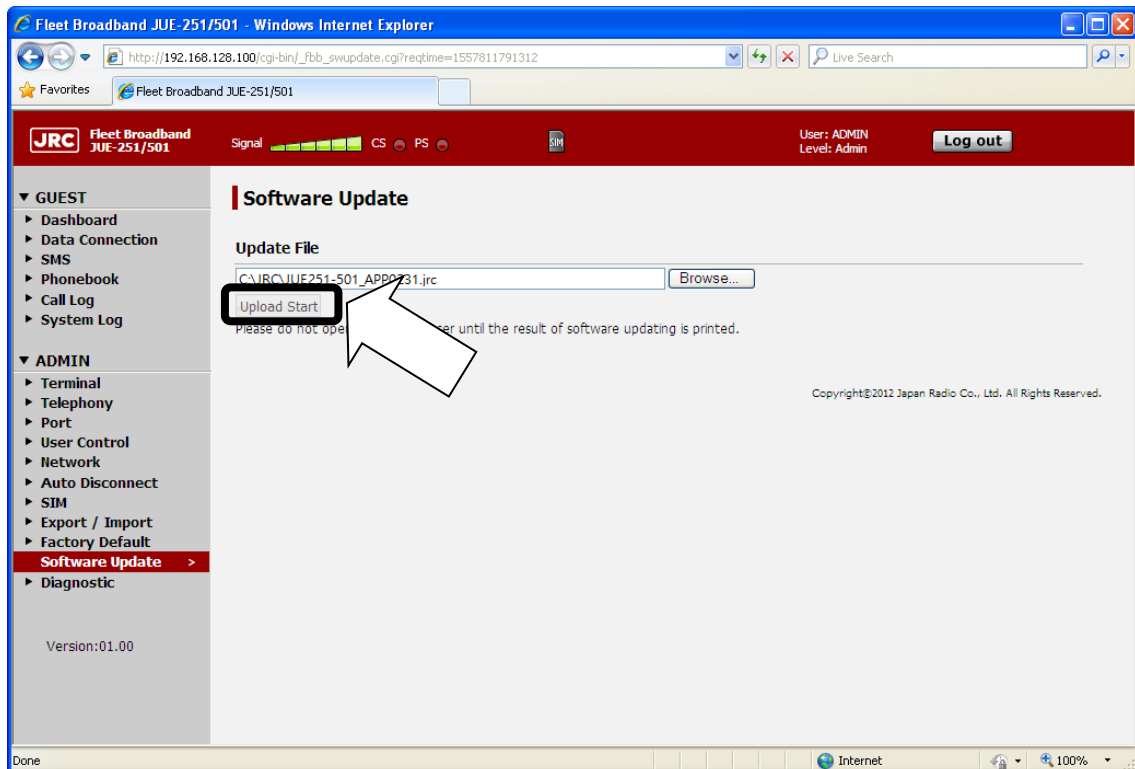


- (4) Click [Browse] button. Then file selection dialog will appear.

- (5) Select the file you have downloaded at [2. Download the latest software for JUE-501/251] and click [Open].



- (6) Click [Upload Start] button.
- The [Upload Start] button changes into disable (gray).
  - Wait until the update was completed and the result is printed.

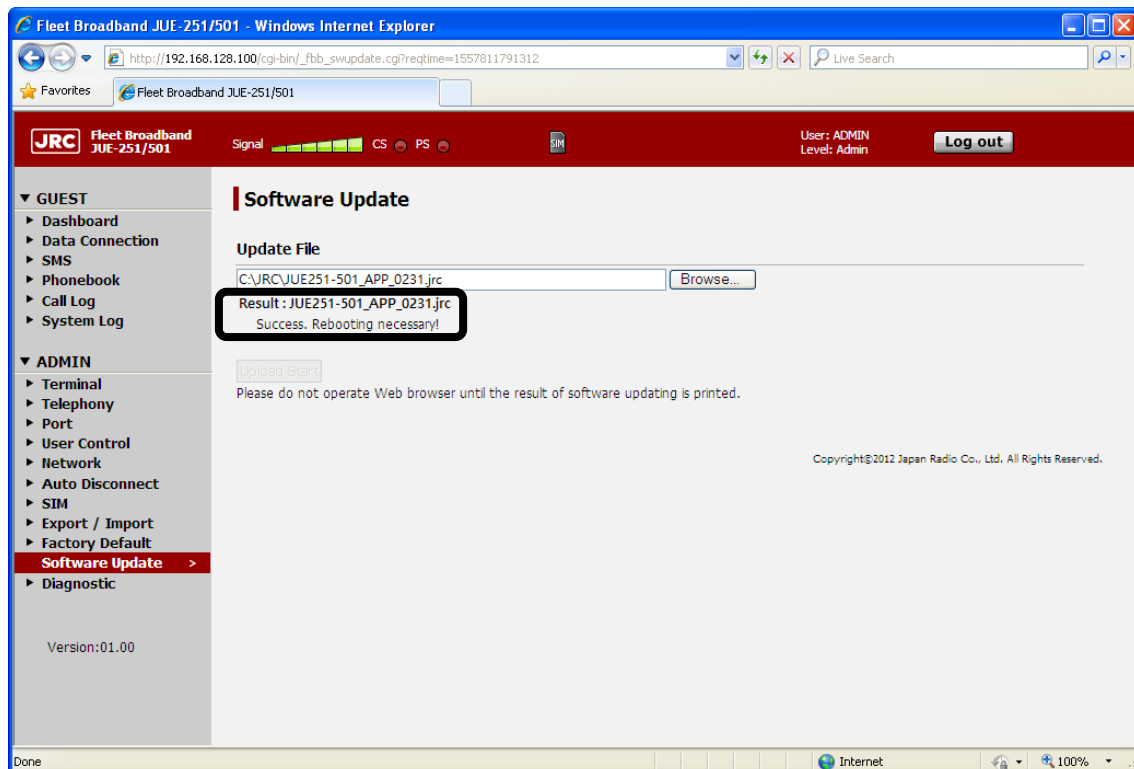


(7) Check the result.

#### NOTE

- Please do not operate your Web browser until the result is printed on the screen.
- It may take more than 3 minutes.
- In the case of unresponsiveness in 5 minutes, reboot JUE-501/251 and retry software updating with following the software updating procedure (on page 2 of this manual) from a) to d).

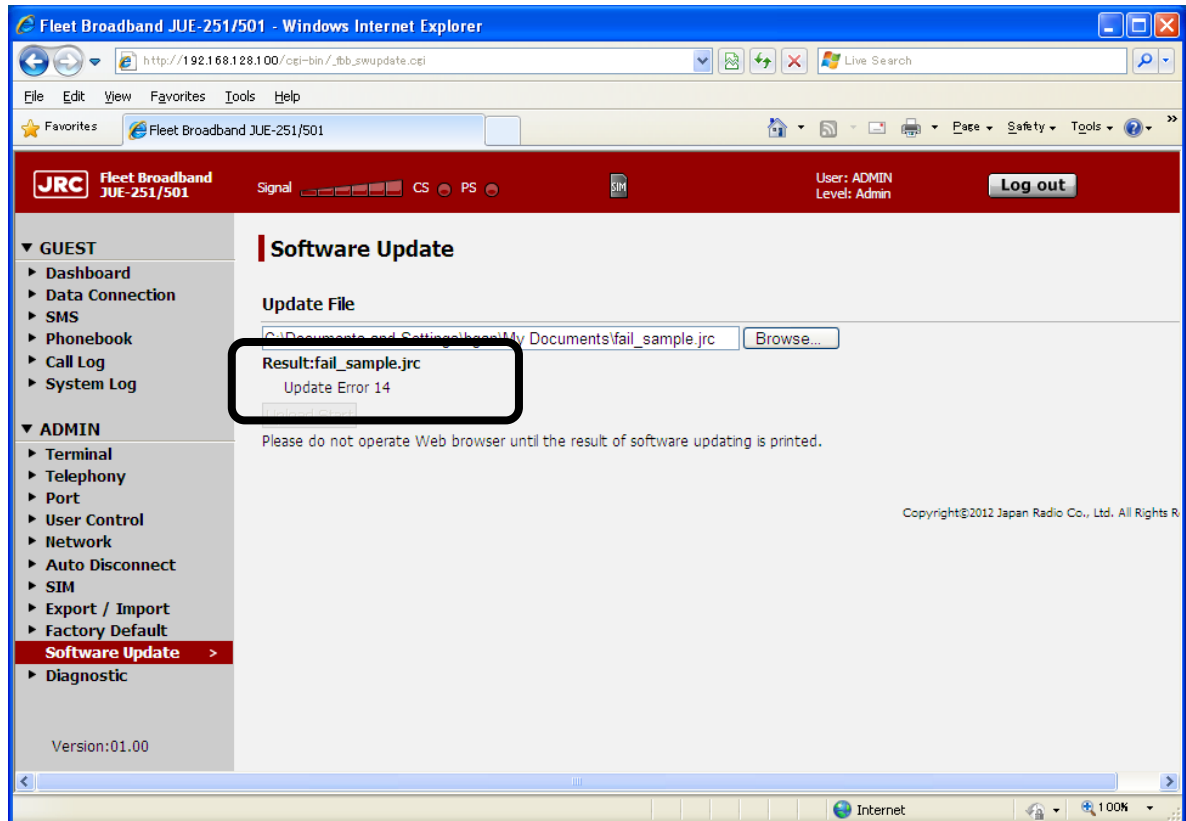
- [Success] is displayed when the update finished successfully. Then, reboot your system.  
When ADE software is updated, the system update ADE software automatically after the system is rebooted (“ADE Update” is displayed in Handset screen. The elapsed time is about 5 minutes). And then the system starts normally.
- [Error] is displayed when the update has failed. Refer “[\*] When software update is failed” in next page.



**[\*] When software update is failed**

Update is failed when “Update Error” is printed on your Web browser.

Check the error code below. Reboot your JUE-501/JUE-251 and retry updating with following the software updating procedure (on page 2 of this manual) from a) to d).



**Table: Software updating error code**

Code	Supposed cause
1	The system is under the software updating already.
2~13 and 17	Internal error.
14~16	The file you uploaded is wrong file.
21~31	It failed in uploading the file.

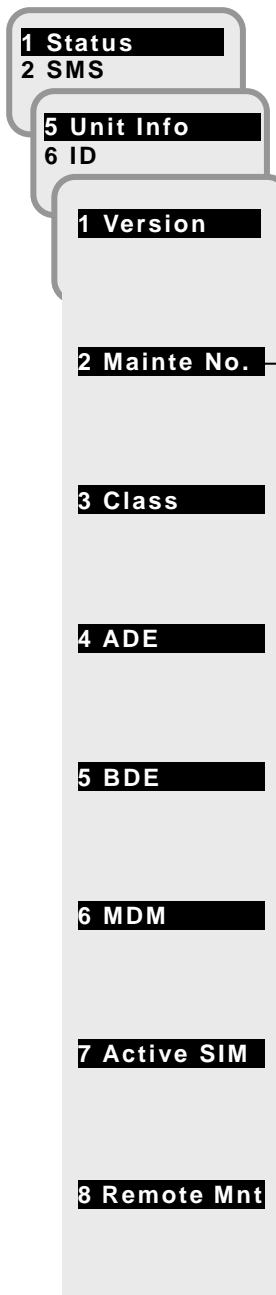


#### 4. Confirm the updated software version

Check that the software version is correctly updated or not, from the following the Handset menu,  
<1> Status - <5> Unit Info - <2> Mainte No.

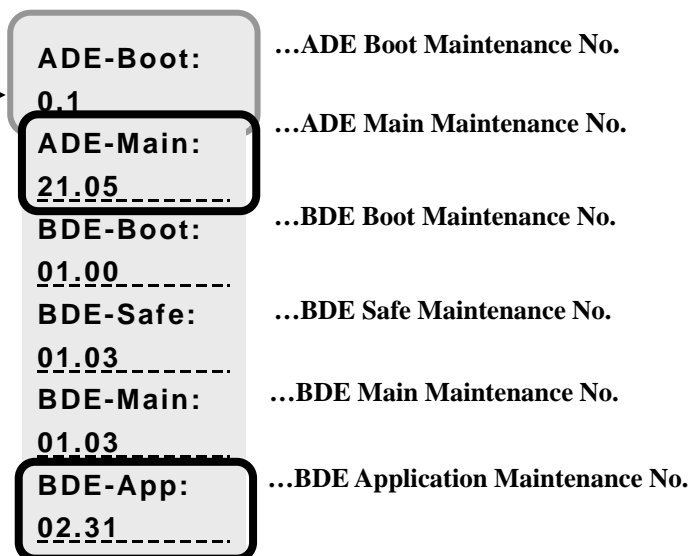
When the update is succeeded, BDE-App No. is changed to the same number as the [0231] of the software file [JUE-251-501\_APP\_0231.jrc]. Please also check ADE-Main is 21.05.

Unit Info menu screen



OK

2. Mainte No. display screen



**[Reference] Software downgrading procedure**

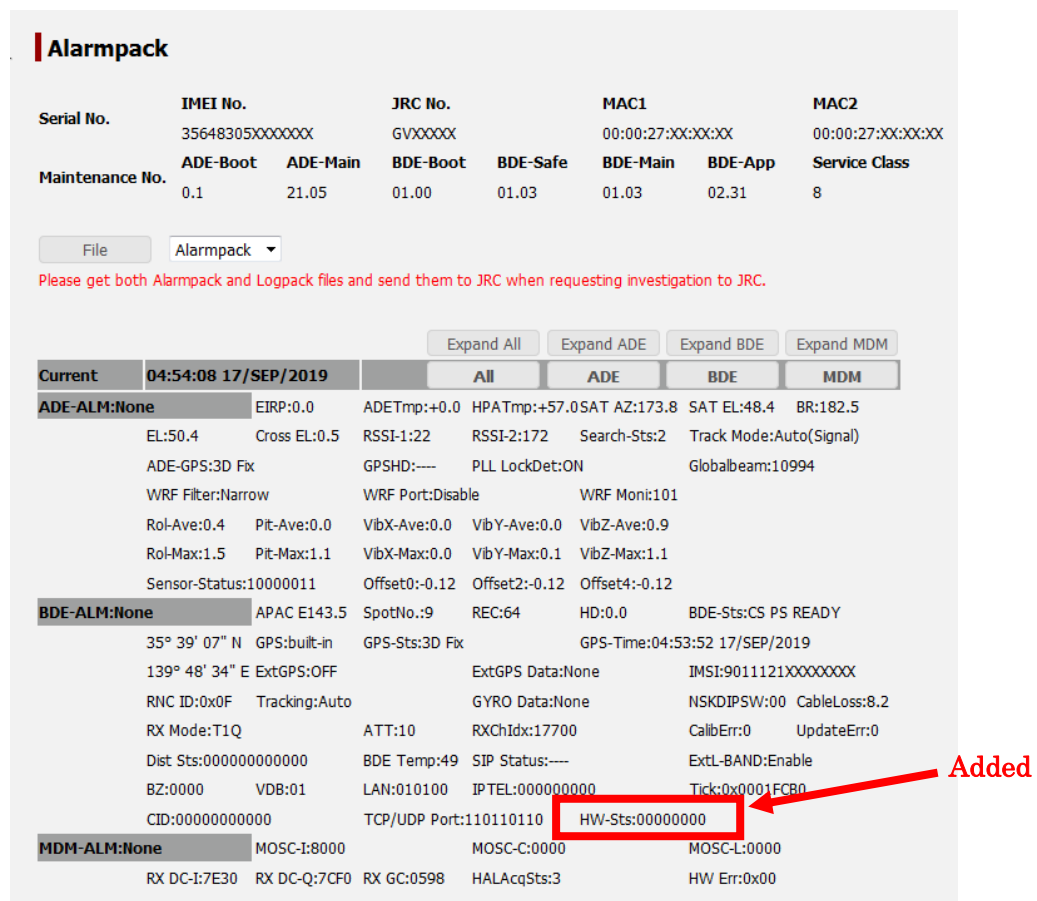
- A) Turn OFF the power supply of JUE-501/251.
- B) Repeat the software updating procedure from [3. Update JUE-501/251 software]. Use [JUE251-501\_APP\_XXXX.jrc] in CD-ROM of JUE-501/251 to execute, instead of the downloaded file [JUE251-501\_APP\_0231.jrc].

## The function to monitor the status of power supply (PSU unit) in BDE

The function to monitor the status of power supply (PSU unit) in BDE and display the status in following Web menu and Handset menu. Note that the status of PSU unit is updated on power on and every 10 minutes after power on.

- BDE part in Web Alarmpack screen (GUEST – System Log – Alarmpack)
- BDE part in Handset Unit Info screen (1 Status – 5 Unit Info – 5 BDE) and BDE part in Alarmpack screen (8 Alarmpack – (List of Alarmpack history) – 2 BDE)

(1) BDE part in Web Alarmpack screen (GUEST – System Log – Alarmpack)



**Alarmpack**

Serial No.	IMEI No.	JRC No.	MAC1	MAC2
	35648305XXXXXX	GVXXXXX	00:00:27:XX:XX:XX	00:00:27:XX:XX:XX

Maintenance No.	ADE-Boot	ADE-Main	BDE-Boot	BDE-Safe	BDE-Main	BDE-App	Service Class
0.1		21.05	01.00	01.03	01.03	02.31	8

Please get both Alarmpack and Logpack files and send them to JRC when requesting investigation to JRC.

Expand All Expand ADE Expand BDE Expand MDM

Current 04:54:08 17/SEP/2019 All ADE BDE MDM

**ADE-ALM:None** EIRP:0.0 ADETmp:+0.0 HPATmp:+57.0 SAT AZ:173.8 SAT EL:48.4 BR:182.5  
 EL:50.4 Cross EL:0.5 RSSI-1:22 RSSI-2:172 Search-Sts:2 Track Mode:Auto(Signal)  
 ADE-GPS:3D Fix GPSHD:---- PLL LockDet:ON Globalbeam:10994  
 WRF Filter:Narrow WRF Port:Disable WRF Moni:101  
 Rol-Ave:0.4 Pit-Ave:0.0 VibX-Ave:0.0 VibY-Ave:0.0 VibZ-Ave:0.9  
 Rol-Max:1.5 Pit-Max:1.1 VibX-Max:0.0 VibY-Max:0.1 VibZ-Max:1.1  
 Sensor-Status:10000011 Offset0:-0.12 Offset2:-0.12 Offset4:-0.12

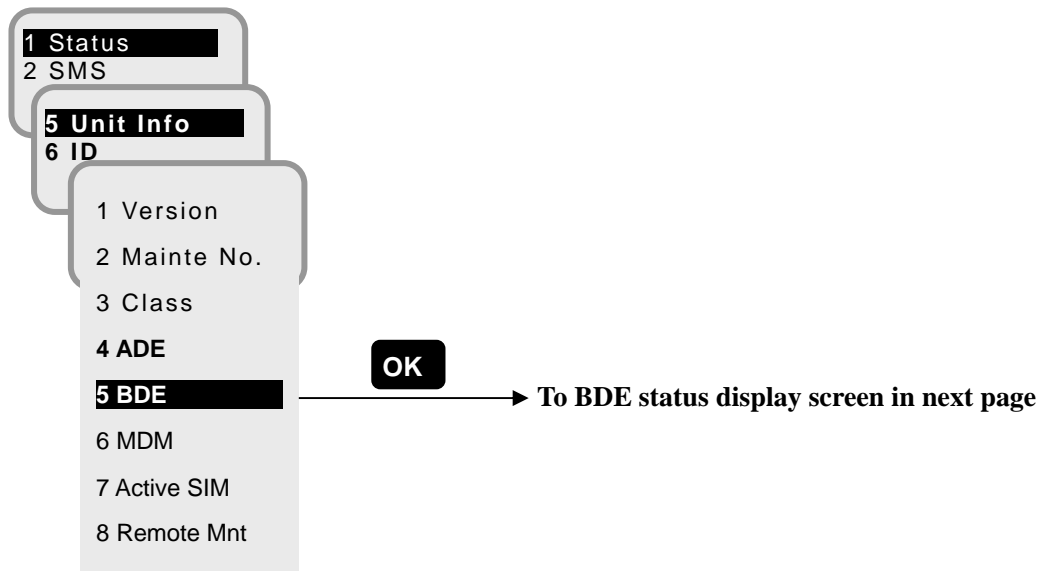
**BDE-ALM:None** APAC E143.5 SpotNo.:9 REC:64 HD:0.0 BDE-Sts:CS PS READY  
 35° 39' 07" N GPS:built-in GPS-Sts:3D Fix GPS-Time:04:53:52 17/SEP/2019  
 139° 48' 34" E ExtGPS:OFF ExtGPS Data:None IMSI:9011121XXXXXXX  
 RNC ID:0x0F Tracking:Auto GYRO Data:None NSKDIPSW:00 CableLoss:8.2  
 RX Mode:T1Q ATT:10 RXChIdx:17700 CalibErr:0 UpdateErr:0  
 Dist Sts:000000000000 BDE Temp:49 SIP Status:---- ExtL-BAND:Enable  
 BZ:0000 VDB:01 LAN:010100 IPTEL:0000000000 Tick:0x0001FCB0  
 CID:000000000000 TCP/UDP Port:110110110 HW-Sts:00000000

**MDM-ALM:None** MOSC-I:8000 MOSC-C:0000 MOSC-L:0000  
 RX DC-I:7E30 RX DC-Q:7CF0 RX GC:0598 HALAcqSts:3 HW Err:0x00

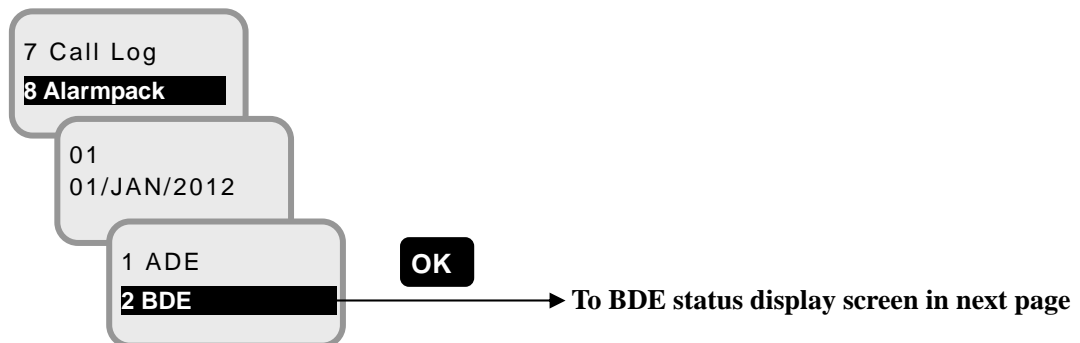
Display	Contents	Displayed style
HW-Sts	Status of hardware	abbbbbbb a: PSU unit(0: normal, 1: abnormal) bbbbbbbb: reserve (always 0)

- (2) BDE part in Handset Unit Info screen (1 Status – 5 Unit Info – 5 BDE) and BDE part in Alarmpack screen (8 Alarmpack – (List of Alarmpack history) – 2 BDE)

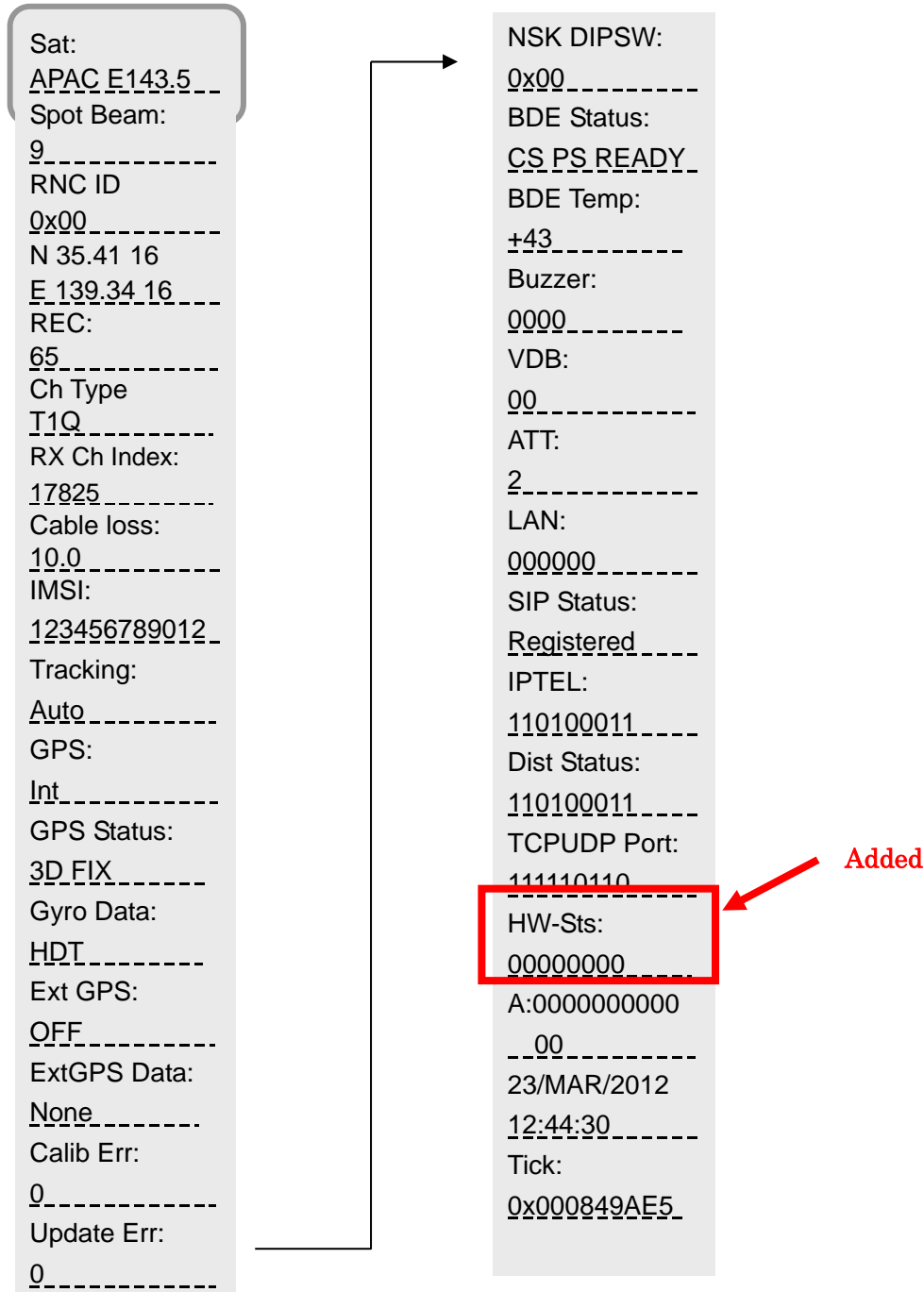
- BDE part in Handset Unit Info screen (1 Status – 5 Unit Info – 5 BDE)



- BDE part in Alarmpack screen (8 Alarmpack – (List of Alarmpack history) – 2 BDE)



BDE status display screen



Display	Contents	Displayed style
HW-Sts	Status of hardware	abbbbbbb a: PSU unit(0: normal, 1: abnormal) bbbbbbbb: reserve (always 0)

## The self-diagnostic function of TEL ports

The function allows to conduct the self-diagnostic of TEL ports at turn-on and turn-off the terminal. The check result is recorded in the “Self Test” event in the Event Log when the TEL port is off-hook state or abnormal. Note that the “Self Test” event is not recorded when all TEL ports are normal.

- The screenshot in the event of “Self Test” event

The following screenshot show that TEL6 port is off-hook state or abnormal at turn-on and turn-off the terminal:

Event Log						
File						
Date/Time	Event	Result	Param1	Param2	Param3	
05:05:02 09/JUN/2019	Power Off	Success	Normal power off			
05:05:02 09/JUN/2019	Self Test	Success	SLIC=000001			
05:05:01 09/JUN/2019	BPS-DeregistrationInd	Success	Code = 0000		SubCode = 0000	
05:02:58 09/JUN/2019	REG End	Success				
05:02:50 09/JUN/2019	BPS-RegistrationInd	Success				
05:02:39 09/JUN/2019	RNC Updated	Success	RNC ID = 0F			
05:02:37 09/JUN/2019	Search End	Success				
04:57:37 09/JUN/2019	Self Test	Success	SLIC=000001			
00:01:04 --/--/----	Start	Success	BDE-App = 02.23			

- The details of the contents of “Self Test” event.

Item	Contents
Event	Self Test
Result	(always) Success
Param1	SLIC=abcdef a: TEL1 port (0: normal, 1: off-hook or abnormal, -: abnormal) b: TEL2 port (0: normal, 1: off-hook or abnormal, -: abnormal) c: TEL3 port (0: normal, 1: off-hook or abnormal, -: abnormal) d: TEL4 port (0: normal, 1: off-hook or abnormal, -: abnormal) e: TEL5 port (0: normal, 1: off-hook or abnormal, -: abnormal) f: TEL6 port (0: normal, 1: off-hook or abnormal, -: abnormal)
Param2	(None)
Param3	(None)

# Inmarsat FB500/FB250 JUE-501/JUE-251 Software Version List (1/3)

No.	Ver.	Maintenance No.		Modification	
15	02.31	ADE	Boot	0.1	No change
			Main	21.05	- Functions improved: 1) Removed the behavior that ADE returns the starting line at the start of satellite search to reduce ADE mechanical impact noise by the behavior (JUE-501). 2) Improved the issue that the ADE sensor manual calibration fails rarely (JUE-251). 3) Ease the conditions for valid GPS heading value used during backup mode of the satellite (JUE-501 and JUE-251).
		BDE	Boot	01.00	No change
			Safe	01.03	No change
			Main	01.03	No change
			App	02.31	- Functions added: 1) Added the function to monitor the status of power supply (PSU unit) in BDE (JUE-501 and JUE-251). 2) Added the self-diagnostic function of TEL ports (JUE-501 and JUE-251). - Functions improved: 1) Reduced the shutdown time when the power is turned off (JUE-501 and JUE-251).
14	02.23	ADE	Boot	0.1	No change
			Main	21.04	No change
		BDE	Boot	01.00	No change
			Safe	01.03	No change
			Main	01.03	No change
			App	02.23	- Functions added: 1) Added the function to disable AT command, IP phone, IPsec VPN and/or Proxy DNS. 2) Added the function to record access log to JUE-501/JUE-251 Web menu. 3) Corresponded to the blocking area display function implemented to JRC MFD. - Functions improved: 1) Improved the log-in function to JUE-501/JUE-251 Web menu. 2) Improved the incorrect indication in "WAN Selector" in the Web Dashboard screen. 3) Improved the symptom that the incorrect ", (comma)" is added in Alarmpack file. 4) Improved the incorrect indication in Handset Call Log screen.
13	02.11	ADE	Boot	0.1	No change
			Main	21.04	No change
		BDE	Boot	01.00	No change
			Safe	01.03	No change
			Main	01.03	No change
			App	02.11	- Functions added: 1) The switching satellite by the indication of SAS (Russian area) 2) The getting a Logpack file by Guest user 3) The manual calibraion for ADE sensor from Handset menu 4) Supported Windows 10 (32/64bit) OS - Functions improved: 1) Automatic reboot in waters close to China 2) Hang up on activating Standard/Streaming IP by PPPoE
12	02.03	ADE	Boot	0.1	No change
			Main	21.04	- Function improved: 1) Added automate calibration function for ADE sensor on JUE-501(for JUE-501)
		BDE	Boot	01.00	No change
			Safe	01.03	No change
			Main	01.03	No change
			App	02.03	- Function added: 1) Added function to enable or disable IP header compression setting (for JUE-501 and JUE-251) - Functions improved: 1) Added automate calibration function for ADE sensor on JUE-501(JUE-501) 2) Improved that the issue that JUE-501/JUE-251 operated in GYRO satellite tracking mode repeats satellite search may occur (for JUE-501 and JUE-251)
11	01.96	ADE	Boot	0.1	No change
			Main	21.01	No change
		BDE	Boot	01.00	No change
			Safe	01.03	No change
			Main	01.03	No change
			App	01.96	- Function improved: 1) Improved the issue that the SIM card cannot be recognized.

## Inmarsat FB500/FB250 JUE-501/JUE-251 Software Version List (2/3)

No.	Ver.	Maintenance No.		Modification	
10	01.95	ADE	Boot	0.1	No change
			Main	21.01	- Function added: 1) Added function for calibrating ADE sensor. (The function is same as that of BDE-App 98.01)
		BDE	Boot	01.00	No change
			Safe	01.03	No change
			Main	01.03	No change
			App	01.95	- Functions added: 1) Supported MEAS (Middle East and Asia) satellite. 2) Supported Inmarsat FX (Fleet Xpress) service. 3) Added function to configure the operation mode for User LAN port. 4) Added new AT command "AT_IJCGDCONT" for PPPoE 5) Added function for calibrating ADE sensor. (The function is same as that of BDE-App 98.01) - Function improved: 1) Improved the issue that wrong APN User/Password is set in Web screen.
9	98.01	ADE	Boot	0.1	No change
			Main	21.01	- Function added: 1) Added the function for calibrating ADE sensor.
		BDE	Boot	01.00	No change
			Safe	01.03	No change
			Main	01.03	No change
			App	98.01	- Function added: 1) Added the function for calibrating ADE sensor.
8	01.78	ADE	Boot	0.1	No change
			Main	20.01	No change
		BDE	Boot	01.00	No change
			Safe	01.03	No change
			Main	01.03	No change
			App	01.78	- Functions added: 1) Supported the Non-SOLAS Voice Distress service. - Functions improved; 1) Improved the Alphasat satellite issue that the terminal status repeats "SAT SEARCH" and "REGISTERING" alternatively, does not become "CS PS READY" and communication (voice and data) is failed in the specific area by changing the satellite in EMEA ocean region from I4 satellite to Alphasat satellite. 2) Changed that the service user "NAFOZgdiKF" who used with the tentative countermeasure of the above Alphasat satellite issue cannot log-in to JUE-501/JUE-251 Web menu. 3) Changed the specification of the PPPoE function.
7	01.65	ADE	Boot	0.1	No change
			Main	20.01	No change
		BDE	Boot	01.00	No change
			Safe	01.03	No change
			Main	01.03	No change
			App	01.65	- Functions added: 1) Added the function for Call Waiting and Call Holding of Telephone Supplementary Service. 2) Extended the function for Auto Answer for Voice/Audio call. - Functions improved; 1) Improved the voice quality of Multi-Voice function.
6	01.57	ADE	Boot	0.1	No change
			Main	20.01	No change
		BDE	Boot	01.00	No change
			Safe	01.03	No change
			Main	01.03	No change
			App	01.57	- Functions added: 1) Added the function to set Call Forwarding and Call Barring of Telephone Supplementary Service. 2) Added the function to get the file which is needed to diagnostic the JUE-501/251 collectively. - Functions improved; 1) Improved the issue that the packet cannot be sent to the air on Standard IP/Streaming IP communication infrequently.
5	01.45	ADE	Boot	0.1	No change
			Main	20.01	No change
		BDE	Boot	01.00	No change
			Safe	01.03	No change
			Main	01.03	No change
			App	01.45	- Functions added: 1) Added Multi-Voice function 2) Supported Mimstone IP telephone (model: IP255P) 3) Extended PPPoE function - Functions improved; 1) Improvement of functions for Xpress Link system of Inmarsat



# Inmarsat FB500/FB250 JUE-501/JUE-251 Software Version List (3/3)

No.	Ver.	Maintenance No.		Modification
4	01.33	ADE	Boot 0.1	No change
			Main 20.01	No change
		BDE	Boot 01.00	No change
			Safe 01.03	No change
			Main 01.03	No change
			App 01.33	- Functions added: 1) Added Handset functions for incoming calls 2) Extended PPPoE Function 3) Added some WEB menus - Functions improved: 1) Support and improvement of functions for Xpress Link system of Inmarsat 2) Improvement of the display-content and operability of some WEB menus
3	01.23	ADE	Boot 0.1	No change
			Main 20.01	No change
		BDE	Boot 01.00	No change
			Safe 01.03	No change
			Main 01.03	No change
			App 01.23	1) In only a few BDE, 2-wire telephone outgoing call and ISDN incoming/outgoing call may be impossible, and improved it.
2	01.22	ADE	Boot 0.1	No change
			Main 20.01	No change
		BDE	Boot 01.00	No change
			Safe 01.03	No change
			Main 01.03	No change
			App 01.22	- Functions added: 1) Add Multi-Voice function with Vocality Basics Multivoice 2) Add Bridge mode for PS connection 3) Add User registration function for ISDN dialup from shore side - Functions improved: 1) Improve Character checking function of APN (Access Point Name) user name and password for special characters
1	01.14	ADE	Boot 0.1	Initial release
			Main 20.01	Initial release
		BDE	Boot 01.00	Initial release
			Safe 01.03	Initial release
			Main 01.03	Initial release
			App 01.14	Initial release