



FARSOUNDER
ARGOS

 **Mackay**
Marine Electronics &
Satellite Communications
www.mackaymarine.com

3D Forward Looking Sonars

350 500 1000

Innovative 3D Sonar Navigation

The Argos Series forward looking sonar systems produce real-time 3D imagery providing users with the knowledge of where it is safe to navigate. These systems are the only products on the market capable of generating a true, 3-dimensional image ahead of a vessel in real-time.

- True, real-time 3D images and overlays on chart
- Image updates with a single ping - no waiting for a sweep
- Chart plotting capabilities using vector charts
- Local History Mapping™ (LHM) creates real-time maps as you sail



ARGOS**350**

350 Meters
Detection Range

18 Knots
Operating Speed

ARGOS**500**

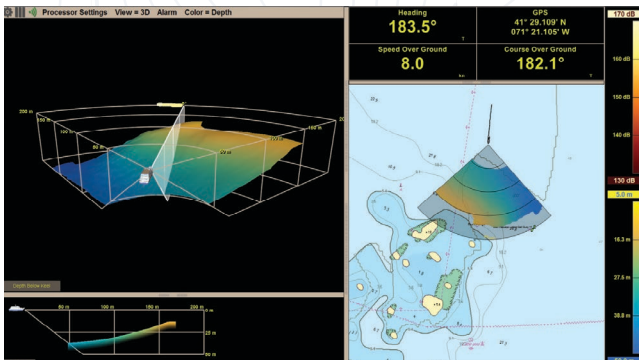
500 Meters
Detection Range

20 Knots
Operating Speed

ARGOS**1000**

1000 Meters
Detection Range

25 Knots
Operating Speed



Safe Navigation

The ARGOS Series outperforms traditional forward looking sonar limitations to ensure safe, confident navigation. Our technology can identify shallows and hazards on the seafloor and dangerous in-water obstacles. The data is color-coded and refreshed at every ping.

Easy Operation

The user-friendly interface enables Captain and crew to navigate with peace of mind and confidence through hazardous and unknown waters. Easily installed and maintained, the system can be integrated with other technologies.

- See data on a 3D viewer and chart overlay
- Straightforward integration into your navigation station
- No moving parts
- Easily installed for a new build or retrofit

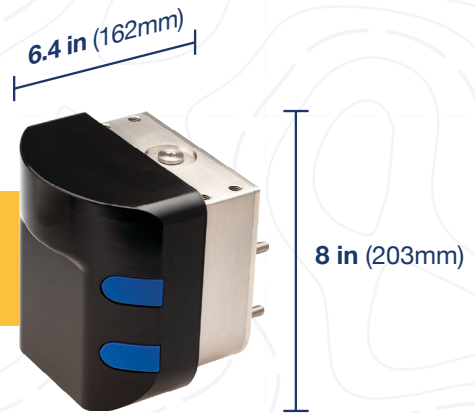
Our Installation

The systems are designed to be suitable for many types of vessels. Installation is easy with or without a bulb on both refit and new-builds.

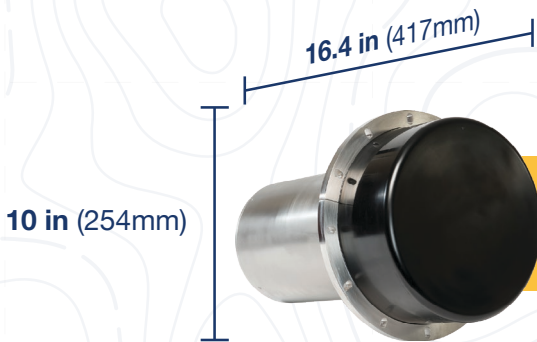


Transducers

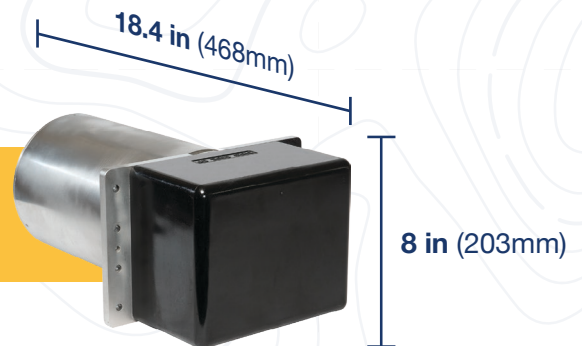
350



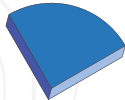
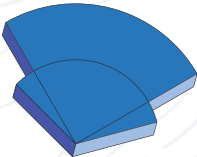
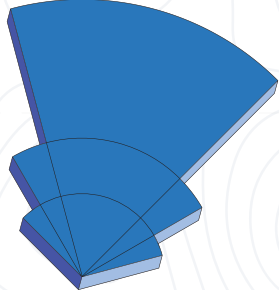
500



1000



ARGOS

	350	500	1000
Range	100m, 200m, 350m	100m, 200m, 500m	100m, 200m, 500m, 1000m
Field of View	 90° up to 350m range	 120° up to 200m range 90° up to 500m range	 120° up to 200m range 90° up to 500m range 60° up to 1000m range
Operational Speed	up to 18 knots	up to 20 knots	up to 25 knots
Chart Overlay	S57/S63 Navico C-MAP Professional™	S57/S63 Navico C-MAP Professional™	S57/S63 Navico C-MAP Professional™
3D Forward Looking Display with True Target Motion™	Yes	Yes	Yes
Bottom Mapping Range	8 x water depth	8 x water depth	8 x water depth
Maximum Depth Detection	50 m (165 ft)	50 m (165 ft)	50 m (165 ft)
Power Requirements	110/22 V, 50/60 Hz @~80W	110/22 V, 50/60 Hz @~100W	110/22 V, 50/60 Hz @~120W
Operating Frequency	61 kHz	61 kHz	61 kHz
Maximum Output Power	<1500 Wrms	<1500 Wrms	<1500 Wrms
Angular Accuracy	~1.6°	~1.6°	~1.6°
Roll/Pitch Stabilization	+/- 20°	+/- 20°	+/- 20°
Refresh Rate	~3Hz to ~1Hz Depending Upon Range	~3Hz to ~.75Hz Depending Upon Range	~3Hz to ~.5Hz Depending Upon Range
Multi-ping Target Stabilization	Yes	Yes	Yes
User Defined Automated Alarms	Audible/Visual/Both	Audible/Visual/Both	Audible/Visual/Both
Operating System	Windows 10	Windows 10	Windows 10
Direct Integration into 3rd Party ECDIS/ECS	Wärtsilä NACOS Platinum™ Team Italia SRL I-Bridge™	Wärtsilä NACOS Platinum™ Team Italia SRL I-Bridge™	Wärtsilä NACOS Platinum™ Team Italia SRL I-Bridge™
Local History Mapping™ (LHM)	Yes	Yes	Yes
SDK	Available	Available	Available