

An aerial photograph of a speedboat moving across the ocean, leaving a large, circular, white wake behind it. The water is a deep blue, and the wake is a bright white, creating a stark contrast. The boat is small and positioned at the bottom of the frame, with its wake expanding outwards in a circular pattern.

GARMIN®

MARINE
2018

CONTENTS

Sonar Technology.....	02
Cartography & Apps.....	08
Software & Features	18
Chartplotters & Combos.....	24
Instruments.....	32
Autopilots	42
Radar	48
Communications	56
Sonars & Fishfinders	62
Wearables & Handhelds	68
Specifications & Networks.....	74
Pricing	90
Support & Contact.....	92

NEW MARINE PRODUCTS AND FEATURES



ACTIVECAPTAIN™ APP

The free all-in-one ActiveCaptain™ mobile app allows you to manage your marine experience from nearly anywhere. It creates a simple yet powerful connection between your compatible mobile device and your chartplotter, charts, maps and the community.

See page 14



REACTOR™ 40 SERIES

Keeps you on steady course at any speeds, minimizes heading error, reduces power consumption and more, so you can be more comfortable while cruising.

See page 44



STRIKER™ PLUS SERIES

Garmin STRIKER™ Plus fishfinders include built-in GPS plus, CHIRP sonar, CHIRP scanning sonar capability and QuickDraw Contours. The 7" and 9" versions also adds WiFi® for ActiveCaptain capabilities.

See page 68



ECHOMAP™ PLUS SERIES

Ready to hit the water with additions like built-in Wi-Fi® to access the ActiveCaptain app and keyed assist touchscreen on certain models. They also deliver CHIRP sonar, premium navigation and Quickdraw Contours software.

See page 32

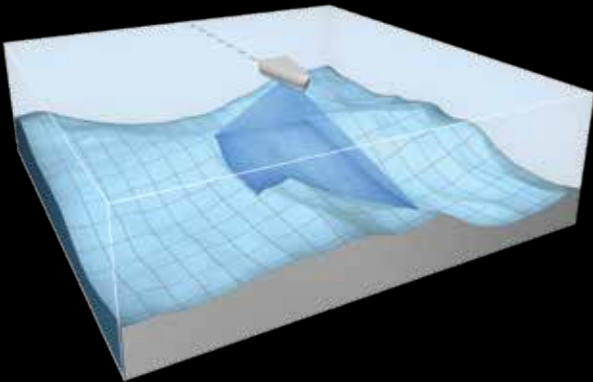


PANOPTIX SONAR – ALL SEEING IS BELIEVING

Panoptix will open up a new world for serious fishermen. You can actually see fish and bait swimming around under or in front of your boat, even your lure – in real time. Panoptix is available in two versions, Panoptix Down and Panoptix Forward. See page 69 for compatible transducers.

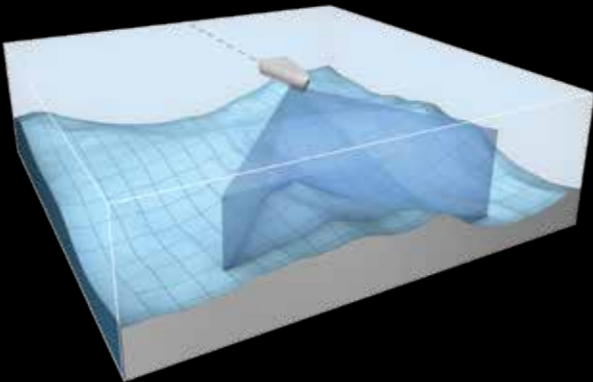
PANOPTIX DOWN

With Panoptix Down you can search three ways: RealVü 3D Historical setting is used for finding fish while your boat is moving. It shows the entire water column in 3D from the bottom to the surface. With RealVü 3D Down, your boat can be stationary and you still see things in 3D around your boat. LiveVü Down is used to see fish coming toward the boat or moving away from it.

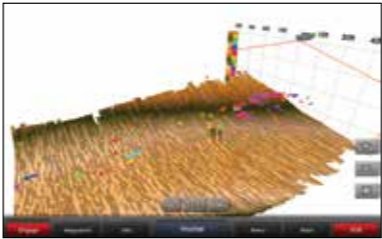


PANOPTIX FORWARD

With Panoptix Forward, you can search three ways: using RealVü 3D Forward, you will see 3D views of fish and structure in the water column in front of your boat. LiveVü Forward shows fish swimming, moving toward or away from your boat. For collision avoidance, FrontVü provides a look forward that shows underwater obstructions as you approach them in real time.



PANOPTIX FEATURES



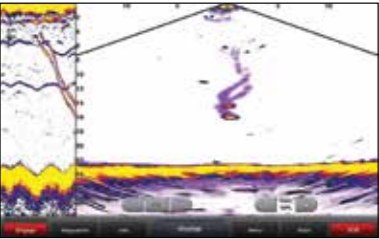
RealVü 3D Historical

Used for finding fish located throughout the entire water column, in 3D, from bottom to surface.



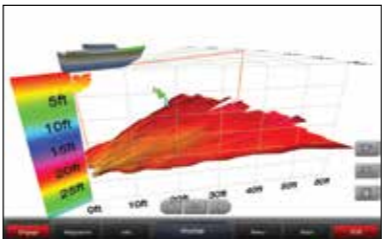
RealVü 3D Down

Allows your boat to be stationary yet still see things around your boat in 3D.



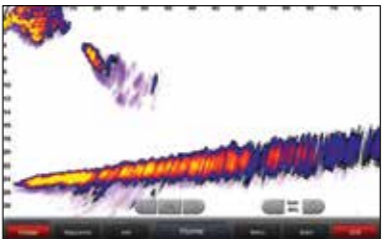
LiveVü Down

Shows fish swimming, moving toward or away from your boat – even your lure – in real time.



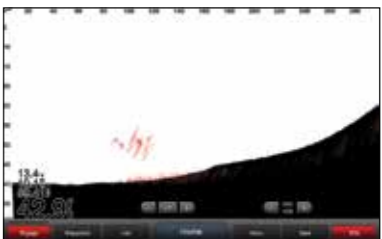
RealVü 3D Forward

Sweeps forward to show you 3D views of the bottom, structure and fish in the water column in front of the boat.



LiveVü Forward

Has a more live video look, showing fish swimming – even your lure, moving toward or away from your boat.



FrontVü

Provides a look forward that shows underwater obstructions as you approach them in real time.



FRONTVÜ

Panoptix FrontVü sonar displays bottom up to 300 feet ahead of the boat (at 8 to 10 times the current depth) and delivers nearly instant feedback to give you more time to react. You can be more confident when navigating unfamiliar water because Panoptix FrontVü has a narrow beam, forward-looking sonar (20 degrees). This allows you to focus on the bottom in front of your boat and not be confused with what is off to each side. It also includes an AHRS sensor for motion stabilization that allows you to see what is in front of your boat even in rough water conditions.

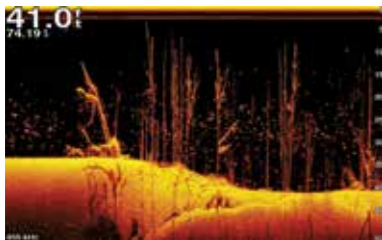
Transducer	PS21-TM	PS21-TR	PS22-TR	PS30	PS31	PS51	PS60
RealVü 3D Down				✓			✓
RealVü 3D Historical				✓			✓
LiveVü Down			✓	✓			✓
RealVü 3D Forward					✓		
LiveVü Forward	✓	✓	✓		✓	✓	
FrontVü Forward	✓	✓	✓		✓	✓	
Garmin Marine Network Compatible	✓	✓	✓	✓	✓	✓	✓
Independent Power Connection	✓	✓	✓	✓	✓	✓	✓
Transom Mount Included	✓ ²			✓	✓ ²		
Trolling Motor Mount Included		✓	✓		✓		
Thru-Hull Mount and Fairing Block						✓	✓

The forward-facing transom mount transducer should be mounted in a location that is out of the water at speeds over 17 Kn. If located below the water line, cruising speeds over 21 Kn should be avoided.

CLEARVÜ AND SIDEVÜ TECHNOLOGY OFFERS STUNNING IMAGE QUALITY WITH SUPERIOR CLARITY AND DETAILS

Scanning sonar technology that offers high-resolution, true-life imaging of the underwater structure and fish, providing a detailed view of both what is below and to the sides of your vessel. You can use this technology to search for and confirm ideal fishing spots.

ADVANTAGES OF SCANNING SONAR



Superior resolution

Enhanced resolution for greater target separation and stunning details.



More dynamic

Wide dynamic range for small target detection, making sure you see more than ever.



Clearer picture

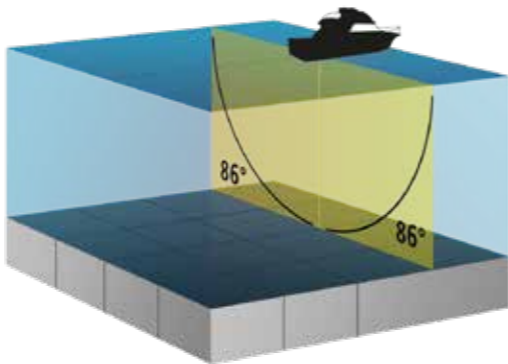
Noise suppression allows for a much clearer picture – a real feast for your eyes.

CLEARVÜ

This high-frequency sonar gives you a clearer picture of what's under the water around your boat, by producing a more detailed representation of objects, structure and fish. ClearVü with CHIRP technology takes it one step further, producing an ultra-clear page with even more detail.

SIDEVÜ

SideVü shows you what is happening to the sides of your boat. An excellent way of finding structures and fish. SideVü with CHIRP technology provides an even more detailed and higher resolution image of what is beneath the surface.



WHAT IS CHIRP?

CHIRP is the most sophisticated sonar technology available for use by the fishing and boating public. The word itself is an acronym for Compressed High-Intensity Radiated Pulse.

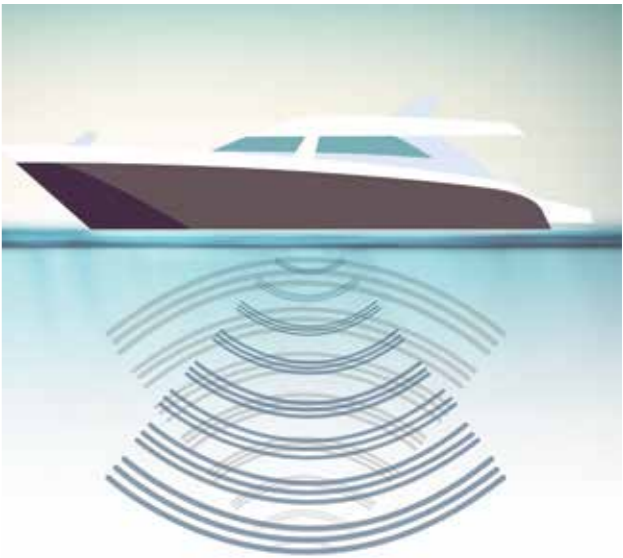
STANDARD SONAR

Standard sonar sends a single frequency at a time. Since the only feedback is from this one single frequency, there is little information to work with, limiting the clarity and resolution available with standard sonar.



CHIRP SONAR

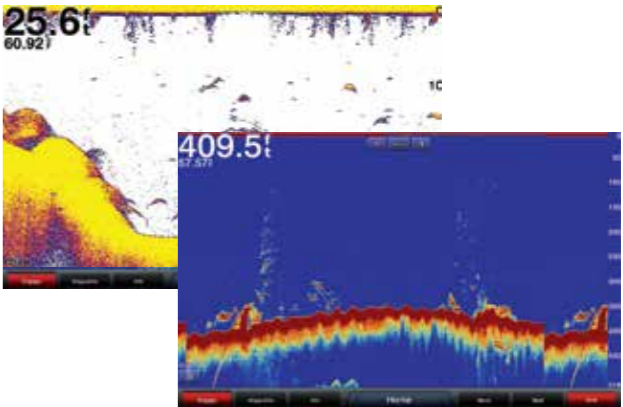
Instead of sending just a single frequency, CHIRP sends a continuous sweep of frequencies ranging from low to high. CHIRP sonar technology then interprets frequencies individually upon their return. Since this continuous sweep of frequencies provides CHIRP with a much wider range of information, CHIRP sonar is able to create a much clearer, higher resolution image.



WHY GARMIN CHIRP?

The key to CHIRP sonar is the interpretation of the data retrieved. The better the data interpretation, the better the screen image.

Compare un-doctored screen images provided by actual Garmin sonar owners to any other CHIRP sonar images you have seen. We think you'll agree that when it comes to CHIRP sonar technology, Garmin is creating products that interpret CHIRP sonar data the best. Especially when paired with a Garmin CHIRP transducer.

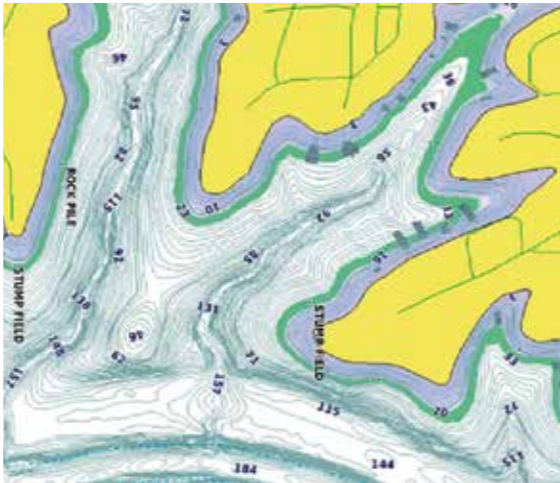






LAKEVÜ HD

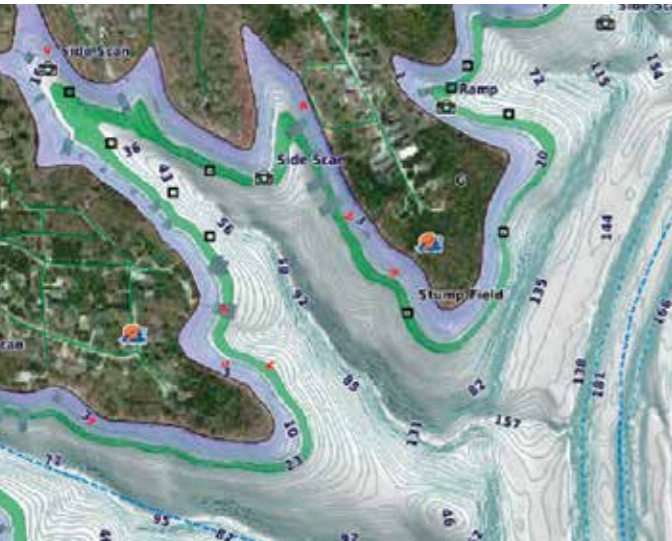
- Coverage on over 17,000 total lakes, of which 13,000 are HD maps with up to 1' contours that provide a clearer view of the lake floor so you can catch more fish and navigate with confidence
- Depth Range Shading for up to 10 depth ranges enables you to view your target depth at a glance
- Shallow Water Shading lets you input and shade a minimum depth to help you avoid running aground
- Displays points of interest, campgrounds, highways and roads as well as underwater features like riverbeds, fish attractors and potential hazards



LakeVü HD Part no: 010-C1087-00

LAKEVÜ HD ULTRA WITH MAXDEF LAKES

- Coverage on more than 17,000 total lakes, of which 13,000 are HD maps with up to 1' contours to provide a clearer view of the lake bottom to catch more fish and navigate with confidence, and more than 700 are MaxDef maps with an unprecedented level of detail in Garmin maps, including sonar imagery and photos of notable spots above and below the water
- Auto Guidance feature shows a suggested route to a destination¹
- High-resolution Relief Shading makes it easier to see contours and find fish holding structure
- Depth Range Shading for up to 10 depth ranges enables you to view your target depth at a glance
- Shallow Water Shading lets you input and shade a minimum depth to help you avoid running aground
- Unique 3D views like MarinerEye and FishEye provide additional perspective both above and below the water line
- High-resolution satellite imagery for superior situational awareness
- Includes Fishing Hot Spots® Pro for Garmin with fish attractors, road beds, brush piles, submerged structures, vegetation, weed coverage and much more



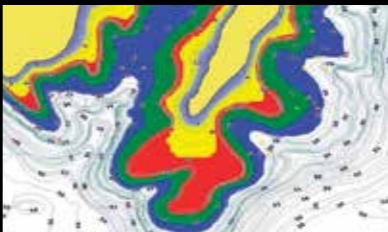
LakeVü HD Ultra Part no: 010-C1110-00

LakeVü Feature Comparison	LakeVü	LakeVü Ultra
Auto Guidance		13,000 US 4,800 Canada
High Resolution Relief Shading		13,000 US 4,800 Canada
Dynamic Lake Level		13,000 US 4,800 Canada
3-D Views (MarinerEye & FishEye)		13,000 US 4,800 Canada
High Resolution Satellite Imagery		13,000 US
Sonar Imagery		13,000 US
Surface and Side Scan Photos		13,000 US
Fishing Hot Spots Pro		13,000 US
1' Contours	17,000 US 13,500 Canada	13,000 US 4,800 Canada
Depth Range Shading	17,000 US 13,500 Canada	13,000 US 4,800 Canada
Shallow Water Shading	17,000 US 13,500 Canada	13,000 US 4,800 Canada
Displays campgrounds, highways and roads and underwater features like fish attractors and potential hazards	17,000 US 13,500 Canada	13,000 US 4,800 Canada



Auto Guidance

Auto Guidance directs you to your hot spots by creating a suggested route on screen for your boat that seeks to avoid shallow water and other charted obstructions.



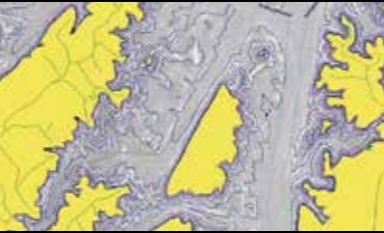
Depth Range Shading

Displays high-resolution Depth Range Shading for up to 10 depth ranges so you can view your designated target depth.



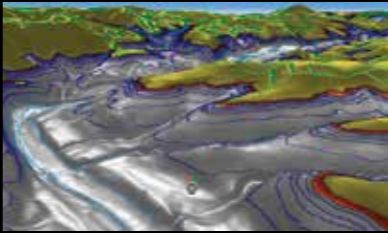
Dynamic Lake Level

Allows you to adjust your maps to the lake's current water levels giving you a better idea of spots that are either accessible or too shallow to explore.



Sonar Imagery

Shows a nearly photographic view of the bottom, as if all the water had been drained away.



MarinerEye View

Provides a 3-D representation of the surrounding area both above and below the waterline.



Relief Shading

High resolution relief shading adds visual depth to the 2-D map making it easier to read.



Surface & Side Scan Photos

Gives you a clear visual reference of notable spots above and structure below the surface of the water.



Fishing Hot Spots Pro

Quickly spot submerged structures, vegetation and weed coverage, artificial habitat locations, submerged road beds and more.

CANADA LAKEVÜ HD

- Coverage on more than 13,500 total lakes, of which 4,800 are HD maps with up to 1' contours to provide a clearer view of the lake floor to catch more fish and navigate with confidence
- Depth Range Shading for up to 10 depth ranges enables you to view your target depth at a glance
- Shallow Water Shading lets you input and shade a minimum depth to help you avoid running aground
- Displays detailed shorelines and coastlines as well as underwater features like riverbeds, fish attractors and potential hazards

Canada LakeVü HD Part no: 010-C1113-00

CANADA LAKEVÜ HD ULTRA

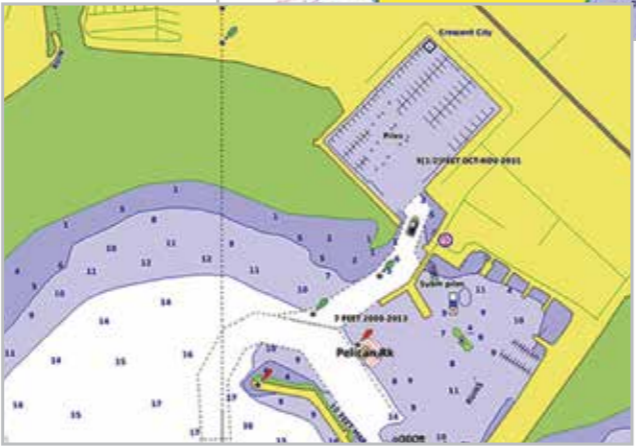
- Coverage on more than 13,500 total lakes, of which 4,800 are HD maps with up to 1' contours to provide a clearer view of the lake floor to catch more fish and navigate with confidence
- Auto Guidance features show the best route to a destination¹
- High-resolution Relief Shading makes it easier to see contours and find fish holding structure
- Depth Range Shading for up to 10 depth ranges enables you to view your target depth at a glance
- Shallow Water Shading lets you input and shade a minimum depth to help you avoid running aground
- Unique 3D views like MarinerEye and FishEye provide additional perspective both above and below the water line
- Dynamic Lake Level adjusts the map based on current water levels

Canada LakeVü HD Part no: 010-C1114-00



BLUECHART® G2 HD

- Derived from official charts and private sources to provide navigational aids, spot soundings, depth contours, tides and currents, and detailed harbors and marinas
- Depth Range Shading for up to 10 depth ranges enables you to view your target depth at a glance
- Up to 1' contours provide a more accurate depiction of bottom structure for improved fishing charts and navigation in swamps, canals and marinas
- Shallow Water Shading feature allows for depth shading at a user-defined level to aid in navigation
- Worldwide coverage available

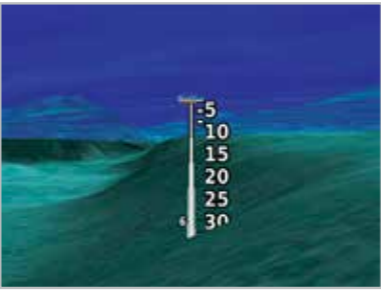


BLUECHART® G2 VISION® HD

Includes everything available with BlueChart g2 and adds:

- Garmin Auto Guidance technology shows a suggested route to a destination¹
- Unique 3D views like MarinerEye and FishEye provide additional perspective both above and below the water line
- High-resolution satellite imagery of ports, marinas, bridges and navigational landmarks for superior situational awareness

BlueChart Feature Comparison	g2 HD	g2 Vision HD
1' HD Contours	•	•
Depth Range Shading	•	•
Shallow Water Shading	•	•
Navigational aids, spot soundings, depth contours, tides and currents and detailed harbors and marinas	•	•
Auto Guidance		•
3-D Views (MarinerEye and FishEye)		•
High Resolution Satellite Imagery		•
Aerial Photography		•
Detailed coastal roads up to 5 miles inland		•



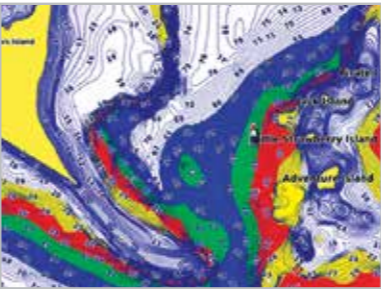
FishEye view
Provides a 3-D representation of the surrounding area both above and below the waterline.



Auto Guidance 3.0
Auto Guidance technology quickly calculates a suggested route using your boat's dimensions and a suggested path to follow.



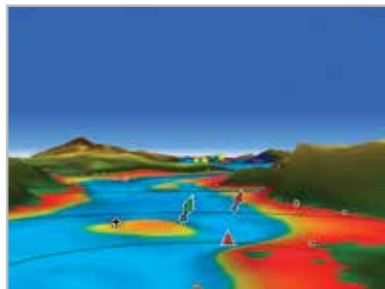
Aerial photos
Crystal clear aerial photography shows exceptional detail of many ports, harbors and marinas and is ideal when entering unfamiliar ports.



Depth Range Shading
Displays high-resolution Depth Range Shading for up to 10 depth ranges so you can view your designated target depth.



Satellite images
High-resolution satellite imagery with navigational charts overlaid gives you a realistic view of your surroundings so you can navigate with a clear moving-chart representation of your boat's position. It's our most realistic charting display in a chartplotter.



MarinerEye view
Provides a 3-D representation of the ocean floor as seen from below the waterline.



THE ULTIMATE CONNECTED BOATING EXPERIENCE

The free all-in-one ActiveCaptain™ app provides a powerful connection to your Garmin chartplotter, charts, maps and the community for the ultimate connected boating experience. Wherever you are, you'll have unlimited access to your cartography, the ability to purchase new maps and charts and access to the Garmin Quickdraw™ Contours Community.

Connect to the ActiveCaptain community for up-to-date feedback on marinas and other points of interest. Smart notifications on your chartplotter screen keep you connected with everyone else. Plan a trip or pre-fish a lake, and ActiveCaptain will automatically sync with your chartplotter.

Even view and control your chartplotter from your smartphone or tablet while you're on the water.



- ### Main functions
- OneChart™ lets you access all your charts and maps from your mobile device and purchase new ones
 - Get smart notifications, such as calls and texts, on your chartplotter display when paired with the app
 - Download software updates and notifications from the app to your Garmin devices
 - Connect to fellow boaters with the ActiveCaptain™ community for up-to-date feedback on marinas and other points of interest
 - Make, save and transfer routes and waypoints between the app and chartplotter — with zero button presses¹
 - Easily upload and download the latest Garmin Quickdraw™ Contours content from the community — with zero button presses
 - View and control your chartplotter from your smartphone or tablet

¹ Zero button presses applies to GPSMAP® chartplotters only



QUICKDRAW CONTOURS¹ – CREATE YOUR OWN MAPS IN HIGH DEFINITION ON-SCREEN IN REAL-TIME

The free, easy-to-use Quickdraw Contours features instantly creates personalized HD maps with 1 ft contours. No training required; you just fish, and the maps are created. The maps are all yours – tailor them to fit your needs. Keep the data for yourself, or share it with the QuickDraw Community on Garmin Connect™.



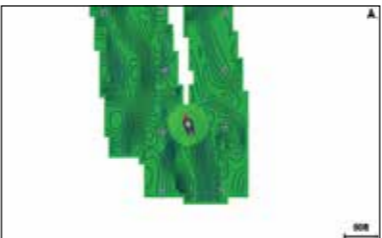
Uncover unknown areas

Screen shows maps being created instantly in real-time. No detailed mapping existed in this area before.



Avoid stranding

Highlighted areas show shallow water based on your settings.



Clear overview

Green shading shows areas where mapping has been created and white spaces indicate gaps.



Expand your maps

Continue to explore and improve existing maps next time you are out on the water.



Mark up locations

Add labels for stumps and other locations.



Share locations

User-created points stay with the map so you can share them with friends or keep them private.

AUTO GUIDANCE¹ – AN INSTANT PATH TO YOUR DESIRED DESTINATION

Patented Garmin Auto Guidance was the first automatic guidance navigation aid of its kind, and Auto Guidance is even more unique to boating. Available when you are using optional BlueChart® g2 Vision® HD, Auto Guidance creates a visible path you can follow, designed for your boat's specification helping you avoid charted hazards and obstructions right to your destination. Auto Guidance even provides point-to-point guidance and navigational solutions, such as entering and exiting marinas – regardless of the depth of the water – with a path indicating where guidance is not conforming to user settings.



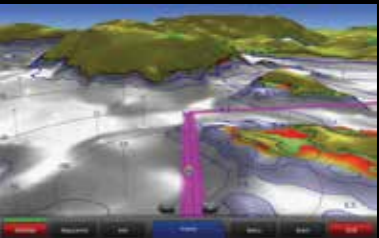
What you need

Enter your location, and Auto Guidance instantly searches through relevant charts to create a safe path specifically designed for the dimensions of your boat.



Creates a path

Also provides navigational solutions, such as entering and exiting marinas regardless of water depth, with a path indicating where guidance is not conforming to user settings.



Autopilot support

Engage your compatible Garmin autopilot to follow the Auto Guidance route, and it will automatically keep you on track.



"Via" points

Adjust the calculated Auto Guidance pathway by inserting "Via" points at interim stops or landmarks along your desired route.



Arrival times

Now you can calculate arrival times at any point of your route – great for timing your arrival to correspond with bridge openings or other time-critical events.



Save your paths

Allows you to save your plotted Auto Guidance paths for future navigation, by backing them up on an SD card with your BlueChart® g2 Vision® HD.

¹ Compatible with all STRIKER Plus, ECHOMAP Plus products and GPSMAP 742/942/1042/1242/7600/8600 chartplotter/sonar combo series (some devices require a free software update).

¹ Available with BlueChart g2 Vision HD (sold separately). Please note that Auto Guidance might have limited functionality for inland waters.



SAILASSIST FOR GPSMAP® SERIES



Laylines
Shows you on screen when you should make a tack or gybe.



Tides and current
Detailed animated view of tides and currents.



New wind rose
Displays true and apparent wind angle at the same time.



Heading and COG
Displays heading and a COG line at the same time.



Pre-race guidance
Helps you hit the start line at the right time at high speed.



Wind graphs
Clear graphs of TWD, TWS and AWS over time.

SAILASSIST CAPABLE PRODUCTS



INNOVATIVE REAL-TIME INTEGRATION BETWEEN VIRB® ACTION CAMERAS AND YOUR COMPATIBLE CHARTPLOTTER¹

For the first time ever, your chartplotter has the ability to control and stream video from your action camera. In return, your plotter can send G-Metrix™ data² such as boat speed, water depth and temperature directly to your VIRB Ultra 30 or XE/X – creating unique and interesting videos.



Wireless³ video streaming
The chartplotter can display up to four video streams at one time, which gives you endless possibilities. Each VIRB can also be named for easy identification.



G-Metrix system
Send boat data to your VIRB Ultra 30 or XE/X which can be overlaid on the video – or use the information with our free VIRB Edit Tool².



VIRB control bar
A control bar can be overlaid on the plotter display to provide quick access to settings and offer a video preview without changing screens.



Perfect for fishing
Panoptix™ shows on the upper half, VIRB and chart on the other. You can now watch the fish eat your lure LIVE at the exact moment as you're setting the hook.⁴



VIRB Mobile App
Free app that turns your compatible smartphone or tablet into a wireless³ remote control for your VIRB Ultra 30, or VIRB XE/X action camera.



ActiveCaptain™ compatible
Free all-in-one app provides a powerful connection to your Garmin chartplotter, charts, maps and the community for the ultimate connected boating experience.

Available marine G-Metrix™ data

GPS navigation	Water²	Sailing²	Engine²
Course Over Ground (COG)	Boat Speed	True and apparent wind angle	RPM
Speed Over Ground (SOG)	Water depth	True and apparent wind speed	
Latitude and longitude	Water temperature		
Heading			

¹ Compatible with GPSMAP 722/922/1022/1222/7400/8400 Series.
² Optional NMEA 2000 accessories are required to provide certain marine G-Metrix data.
³ Each VIRB, Ultra 30 or XE/X has the capability to create its own Wi-Fi network.
⁴ Requires compatible transducer (sold separately).

iPhone and iPad are trademarks of Apple Inc., registered in the U.S. and other countries. App Store is a service mark of Apple Inc. Android and Google Play are trademarks of Google Inc. Wi-Fi is a registered trademark of the Wi-Fi Alliance.

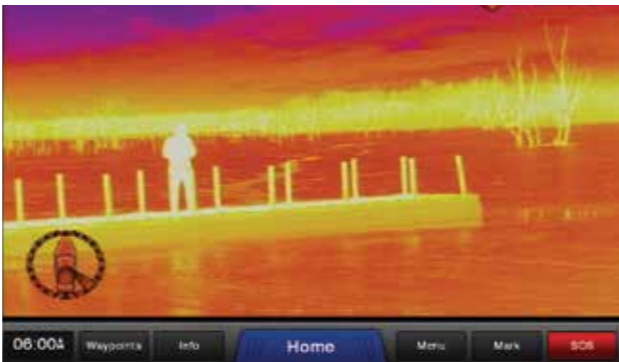


DIGITAL SWITCHING



How would you like full one-touch helm control of AC mains, charge inverters and virtual devices on compatible GPSMAP series? With the Garmin digital switching capabilities you have complete control of the boats' electronic systems from the convenience of the your GPSMAP touchscreen.

FLIR® THERMAL VISION



Don't let darkness and bad visibility drive you off of the water. With thermal night vision, your time on the water is much safer. FLIRs thermal imaging cameras are rapidly finding their way to pleasure crafts and yachts all over the world, as well as to commercial vessels, work boats, fishing boats, cruise ships and many other types of vessels. Is your boat one of them?

FUSION-LINK™ INTEGRATION

FUSION-Link allows your compatible Garmin chartplotter or combo the ability to integrate with, and use FUSION's special entertainment functionality, creating a centralized control station for the entire vessel, and a more user-friendly experience.

Main functions

- Volume separation with FUSION's Multi-Zone™ control available at the helm, right from your MFD
- For absolute convenience: install a FUSION Wired Remote Control in each listening zone
- Add media bar to stay informed and in control of your MFD and your entertainment experience at the same time
- Recreate your iPod/iPhone interface and get access to your favorite music with ease
- Control FUSION-Link capable marine stereos directly from your MFD
- Compatible with GPSMAP 700, 900, 1000, 1200, 7600, 8000, 8600 series and ECHOMAP Plus series

iPhone and iPad are trademarks of Apple Inc., registered in the U.S. and other countries.



SMARTMODE™

SmartMode control allows you to quickly change all screens at a helm in sync to a preset mode with the push of a button.

FISHING

GARMIN MARINE NETWORK & NMEA 2000®

Garmin makes it easy to connect multiple devices and instruments in your boat. Simply combine the Garmin Marine Network with the NMEA 2000 to view multiple functions, such as chartplotter, radar, sonar, AIS, on one or more displays.

All Garmin Marine Network and NMEA 2000 devices come with an easy plug-and-play setup. The system automatically detects the devices in the network and makes them ready to use. All connectors are waterproof and the speed of the network is an impressive 100 Mbit. This means you can simultaneously view radar images, charts, soundings and other information on one or more displays in real time without any delay.

With an almost endless number of options, you can make your on-board network as advanced as you like.

VIEW NETWORK EXAMPLES ON PAGES 84-87







EXPERIENCE A BEAUTIFULLY POWERFUL, COMPLETELY NETWORKED HELM AT YOUR FINGERTIPS.



GPSMAP 8400/8600 Series large-format multifunction displays feature 17-, 22- or 24-inch full HD in-plane switching (IPS) screens with touch control and the highest resolution on the water. Includes a high-performance processor for our fastest map drawing ever. Install multiple displays either flush or flat mounted edge-to-edge to create a glass helm look.

Main Functions		
<ul style="list-style-type: none">Premium glass helm with choice of 17-, 22- or 24-inch full HD display with touchscreen controlConfigure the full system to provide one-touch access to docking, cruising, fishing, anchoring and moreBeautiful glass look with ability to install multiple displays either flush or flat mounted edge-to-edgeGPSMAP 8600 Series includes preloaded BlueChart® g2 U.S. and Canada coastal charts and LakeVü HD inland mapsBuilt in Garmin Quickdraw™ software to create your own HD fishing maps with 1' contours.	<ul style="list-style-type: none">GPSMAP 8400 Series includes a worldwide basemapNew high-performance processor for our fastest map drawing everEnhanced video processing with up to 4 IP (internet protocol) camera streams and simultaneous ActiveCaptain application supportPresets for sonar, radar, cameras, media and digital switching can be independent or incorporated into SmartMode™ station controlsOne-touch access to information eases high-stress situations such as docking	<ul style="list-style-type: none">Includes built-in Wi-Fi® connectivity, ANT® technology, 4 wired Ethernet ports, NMEA 2000, HDMI and USB ports, FUSION-Link integration, and supports the latest Garmin components with complete network compatibilityJ1939 support for engines and generatorsStandard USB touch output for use as a touchscreen monitor for PCs (windows 7/8/10) and MacSupports the latest Garmin components, including Fantom™ open-array radar featuring MotionScope™, autopilot, instruments, sonar (with Panoptix™ all-seeing sonar), VIRB Action cameras, cameras, GRID, wireless remote, weather and card reader as well as FUSION-Link™ entertainment integration

Wi-Fi is a registered trademark of the Wi-Fi Alliance.



EXPERIENCE THE POWER OF TOTAL INTEGRATION



The GPSMAP 7600 Series has beautiful widescreen multitouch fully networked displays with premium mapping designed for fishermen, cruisers, sailors or anyone else who desires high performance and ease of operation.

Main Functions		
<ul style="list-style-type: none">Multitouch 7", 8", 10", 12" and 16" widescreen displaysBuilt in high-sensitivity 10Hz GPS/GLONASS receiverWireless communication via Wi-Fi®, connect with ActiveCaptain mobile appSmartMode™ control quickly changes all screens at a helm in syncRadar compatibleAutopilot integrationJ1939 support for engines and generatorsFLIR® Thermal Camera and IP Camera supportComposite video inputDVI-D output (7410, 7412 and 7416 only)VIRB® Integration compatibleFUSION-Link™ support	<ul style="list-style-type: none">NMEA® 0183 and 2000 compatibleBlueChart® g2 HD & g2 Vision HD compatibleQuickdraw Contours compatibleInstallation options – bracket, flush or flat <p>SailAssist™ features</p> <ul style="list-style-type: none">Laylines, showing you on screen when to make a tack or gybeShow true wind and apparent wind angle at the same timeShow a heading and a course over ground line simultaneouslyAutomatically configure plotters optimally for sailingShow true wind direction to data fieldsShow Upwind/Downwind VMG and VMG to Waypoint to optimise sailing performance	<ul style="list-style-type: none">Pre-race guidance, helps you hit the start line at the right time at high speed <p>Sonar features 7600xsv Series</p> <ul style="list-style-type: none">Built-in Garmin HD-ID™ sonar, true dual-channel CHIRP sonar and both ClearVü and SideVü scanning sonar with CHIRP technologySupports a wide range of compatible Garmin transducers, including 50/200 kHz, 77/200 kHz, CHIRP Traditional, CHIRP ClearVü and SideVüSupports Panoptix™ All-Seeing sonarSupports premium GSD™ 26 sonar moduleTransmit power: 1 kW RMS (8000 W peak-to-peak); CHIRP: 1 kW RMS (8000 W peak-to-peak)Graphic logging of water temperature and sonar recordingAll-in-one transducer options

Wi-Fi is a registered trademark of the Wi-Fi Alliance.



1242xsv Part No: 010-01741-11



1042xsv Part No: 010-01740-11

KEYED NETWORKING CHARTPLOTTERS AND COMBOS

Experience advanced all-in-one solutions with these keyed combos. Large, bright 10" or 12" screens coupled with quick and easy-to-use keypad interface with user-programmable keys and a multifunction control knob. Available with built-in Garmin CHIRP sonar and CHIRP ClearVü scanning sonar (transducers sold separately). Also available with both U.S. LakeVü HD maps and BlueChart® g2 HD charts.

Main Functions		
<ul style="list-style-type: none">Large, bright 10" or 12" screens with keypad interface and multifunction control knobBuilt-in high-sensitivity 10Hz GPS/GLONASS receiverInclude both U.S. LakeVü HD maps and BlueChart® g2 chartsInclude Quickdraw Contours map drawing softwareSupport Garmin Marine Network; allows sharing of sonar, radar, maps, user data, NMEA 2000® and NMEA 0183 support for network connectivity, including autopilots, digital switching, weather, media, VHF, AIS and other sensorsBuilt-in wireless capabilities for ActiveCaptain app and VIRB® action camera integrationIntegrated ANT® support for use with quatix® 3 and quatix 5 marine watch, Garmin Nautix™ in-view display, gWind™ Wireless 2 transducer, GNX Wind marine instrument and wireless remote controls	<ul style="list-style-type: none">Supports optional U.S. LakeVü HD Ultra maps and BlueChart® g2 Vision® HD charts with Auto Guidance, satellite imagery, 3-D perspectives and more <p>Sailing Features</p> <ul style="list-style-type: none">Laylines show on screen when to make a tack or jibeShow true wind and apparent wind angle at the same timeShow a heading and a course over ground line simultaneouslyAutomatically configure plotters optimally for sailingShow true wind direction to data fieldsShow Upwind/Downwind VMG and VMG to Waypoint to optimize sailing performancePre-race guidance helps you hit the start line at the right time at high speed	<p>Sonar Features</p> <ul style="list-style-type: none">Garmin single channel CHIRP sonar, CHIRP ClearVü and CHIRP SideVü scanning sonar (transducers sold separately)Supports Panoptix™ all-seeing sonar and premium Garmin sonar modules



1242xsv Touch Part No: 010-01917-13
1242 Touch Part No: 010-01917-11



942xs Part No: 010-01739-03
942 Part No: 010-01739-01

742xs Part No: 010-01738-03
742 Part No: 010-01738-01

ADVANCED NAVIGATION IN COMPACT CHARTPLOTTERS AND COMBOS

These 7", 9" and 12" touchscreen chartplotters and combos prove that advanced navigation does come in a compact package. The 7" and 9" models are available with built-in Garmin CHIRP sonar and CHIRP ClearVü scanning sonar. The 12" Touch is available with 1 kW single-channel CHIRP, ClearVü/SideVü scanning sonars (transducers sold separately). Also available with both U.S. LakeVü HD maps and BlueChart® g2 charts.

Main Functions		
<ul style="list-style-type: none">7", 9" or 12" high-resolution intuitive touchscreensBuilt-in high-sensitivity 10Hz GPS/GLONASS receiverInclude both U.S. LakeVü HD maps and BlueChart® g2 chartsInclude Quickdraw Contours map drawing softwareSupports Garmin Marine Network; allows sharing of sonar, maps, user data, radar, IP cameras and Panoptix™ sonar among multiple unitsBuilt-in wireless capabilities for ActiveCaptain app and VIRB® action camera integrationNMEA 2000® and NMEA 0183 support for network connectivity, including autopilots, digital switching, weather, FUSION-Link, VHF, AIS and other sensorsIntegrated ANT® support for use with quatix® 3 and quatix 5 marine watch, Garmin Nautix™ in-view display, gWind™ Wireless 2 transducer, GNX Wind marine instrument and wireless remote controls	<ul style="list-style-type: none">Supports optional U.S. LakeVü HD Ultra maps and BlueChart® g2 Vision® HD charts with Auto Guidance, satellite imagery, 3-D perspectives and more <p>Sailing Features</p> <ul style="list-style-type: none">Laylines show on screen when to make a tack or jibeShow true wind and apparent wind angle at the same timeShow a heading and a course over ground line simultaneouslyAutomatically configure plotters optimally for sailingShow true wind direction to data fieldsShow Upwind/Downwind VMG and VMG to Waypoint to optimize sailing performancePre-race guidance helps you hit the start line at the right time at high speed	<p>Sonar Features</p> <ul style="list-style-type: none">7" and 9" with Garmin 1 kW single-channel CHIRP and CHIRP ClearVü scanning sonars (transducer sold separately)12" Touch with Garmin 1 kW single-channel CHIRP, ClearVü/SideVü scanning sonars (transducer sold separately)Supports Panoptix™ all-seeing sonar



NEW 2018

73cv US LakeVu HD, w/CV22 Part no.: 010-01893-01
74cv US Offshore g2, w/CV23 Part no.: 010-01894-01
75cv Canada LakeVu HD w/CV22 Part no.: 010-01895-00
73sv US LakeVu HD, w/o XDCR Part no.: 010-01897-00
73sv US LakeVu HD, w/CV52 Part no.: 010-01897-01
74sv US Offshore g2, w/o XDCR Part no.: 010-01898-00
74sv US Offshore g2, w/CV51 Part no.: 010-01898-01
75sv Canada LakeVu HD w/CV52 Part no.: 010-01899-00

63cv US LakeVu HD, w/CV20 Part no.: 010-01889-01
64cv US Offshore g2 w/o XDCR Part no.: 010-01890-00
64cv US Offshore g2 w/CV23 Part no.: 010-01890-01

93sv US LakeVu HD, w/o XDCR Part no.: 010-01901-00
93sv US LakeVu HD, w/CV52 Part no.: 010-01901-01
94sv US Offshore g2, w/o XDCR Part no.: 010-01902-00
94sv US Offshore g2, w/CV51 Part no.: 010-01902-01
95sv Canada LakeVu HD w/CV52 Part no.: 010-01903-00

43cv US LakeVu HD, w/CV20 Part no.: 010-01885-01
44cv US Offshore g2, w/CV20 Part no.: 010-01886-01
45cv Canada LakeVu HD, w/CV20 Part no.: 010-01887-00

ECHOMAP PLUS SERIES – UNPARALLELED INNOVATION

Easy-to-use, easy-to-setup chartplotter/sonar combos with keyed-assist touchscreens¹, incredibly clear CHIRP traditional sonar, CHIRP ClearVu and CHIRP SideVu scanning sonar. Offers premium navigation plus built-in Wi-Fi[®] to pair with the free ActiveCaptain app.

Main functions

- Available in 4", 6", 7", 9" display sizes
- Keyed assist touchscreen (7" and 9")
- Built-in 5Hz GPS receiver
- Built-in Wi-Fi[®] to pair with the free ActiveCaptain app (6", 7" and 9")
- Quick-Release mount
- User data sharing (4" and 6" only)
- AIS and DSC Support
- NMEA[®] 0183 and 2000. (not incl on 4")
- Receive data from autopilots, engines, sensors, VHF and much more¹ microSD[™] card slot
- BlueChart[®] g2 HD, BlueChart g2 Vision HD and LakeVu Ultra compatible
- Built in Quickdraw Contours
- SailAssist sailing features
- Installation options – bracket or flushmounted

Sonar features

- All models come with built-in HD-ID[™], Traditional and ClearVu scanning sonar with CHIRP technology
- The sv Series also ads SideVu scanning sonar with CHIRP technology
- Supports a wide range of compatible Garmin transducers, including 50/200 kHz, 77/200 kHz, CHIRP Traditional and Garmin CHIRP ClearVu[™] and more
- Supports Panoptix[™] sonar¹
- Transmit power: 500 W (RMS), 4,000 W (peak-to-peak)
- Sonar recording
- Sonar history rewind

Quick-Release mount example

The mounts feature both tilt and swivel capabilities to provide an optimum viewing angle. Cables plug directly into the mount, allowing quick installation and removal.

Wi-Fi is a registered trademark of the Wi-Fi Alliance







GNX 130 Part No: 010-01396-00

GNX 120 Part No: 010-01395-00

ENJOY SUPERIOR READABILITY IN ALL CONDITIONS

Designed for serious sailors who demand quality, precision and total integration. High-precision glass-bonded 10" or 7" large format instrument creates a beautiful "glass mast" display with superior readability in all conditions, day and night, with no fogging.

Main Functions

- High-precision glass-bonded backlit LCD display avoids fogging
- Bold digits are the largest digits in class
- Provides the data necessary to make confident decisions
- Displays over 50 marine and boat parameters for wind, sea, and vessel conditions
- Configuration and set up through capacitive touch buttons on the display
- Integrated sailing eco-system allows seamless sharing of sailing data between Garmin devices
- Change functions from optional fixed-mount GNX Keypad (sold separately)
- Easy expandability/scalability (no server required)
- 10 Channels to display information from tactical Navigation SW like Expedition, Adrena and SeaTrack
- Large, easy-to-read white or color digits on black background for high contrast and high visibility in all lighting conditions
- Tailor display for optimum viewing choosing from 7 different backlight colors, or create color
- Auto-scroll screens for hands-free operation
- Low power consumption (0,35W day, no backlight and 0,40W night with midlevel backlight)
- Fully customizable user-profiles allow you to configure screen layout to your preferred setting
- Five display configurations: single, dual and triple function, plus Gauge and Graph modes
- NMEA 2000® certified
- Flat or flush mount for a beautiful glass mast look using optional mast brackets

GNX KEYPAD

Control the GNX 120 or GNX 130 from a distance with this optional push-button keypad interface that can be mounted near the helm. It includes four buttons dedicated to preset configurations. Plus, you can adjust the background lighting of all displays with the touch of a button.



GNX Keypad Part No: 010-12255-00

Main Functions

- 4 "hot keys" dedicated to preset configurations
- Set different levels of lighting. Adjust background lighting of all displays with the touch of a button

MAST BRACKETS FOR GNX 120

Flat mount the GNX 120 display for a beautiful glass mast look using our carbon fiber mast brackets. There are three mast bracket options to choose from – 2, 3, or 4 units.



Mast bracket 2 units Part No: 010-12236-00
Mast bracket 3 units Part No: 010-12236-01
Mast bracket 4 units Part No: 010-12236-02

Main Functions

- Flat mount for a beautiful glass mast look
- With included neoprene protective cover that protects your GNX 120 units from the harsh marine environment when not in use



GNX WIND – SUPERB ADDITION FOR ALL SAILBOATS



Apperent wind speed.



Steer Guidance.



GNX Wind Part No: 010-01142-30

GNXWind marine instrument features high-visibility, glass-bonded backlit LCD display with customizable colors. Shows two data fields and a digital wind rose simultaneously to display true and apparent wind data, steering guidance, boat speed and more. It also offers 15 important marine parameters for wind, speed, navigation and customizable profiles and other configurations.

Main Functions

- Glass-bonded backlit monochrome LCD display lens to avoid fogging
- Displays true and apparent wind speed and wind angles, true wind direction, boat speed, speed over ground, VMG, heading, course over ground, closed haul and more
- Large digits with high contrast for visibility in all lighting conditions
- Provides backlight color for unique and personal settings
- ANT® capable and can stream NMEA 2000 data to quatrix® 3 and quatrix 5
- Auto-scroll screens for hands-free operation
- Low power consumption (0,35W day, no backlight and 0,40W night with midlevel backlight)
- Customizable user-profiles allow personalized and preferred screen settings
- Available as part of the GNX Wired Sail Pack
- Flush or flat mount installation options

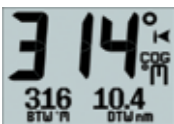


FULLY CUSTOMIZABLE MARINE INSTRUMENTS



GNX 20 Part No: 010-01142-00

GNX 21 Part No: 010-01142-10



Navigation Data.



True Wind Speed/Angle.



Speed Through Water.

Perfectly designed for both sailboats and powervessels, these easy-to-read marine instruments, clearly show depth, speed, wind and 50 additional marine and vessel parameters. With glass-bonded displays, they provide excellent readability night and day with high-contrast 36 mm digits. GNX 21s inverted display also makes it easier on the eyes at night. Enjoy hands-free operation while your preset auto-scroll function automatically cycles between screens.

Main Functions

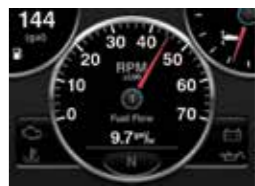
- 4" hybrid monochrome display with glass-bonded lens to prevent fogging
- Backlight with seven preset colors or customise your own
- Auto-scroll function, set your display to automatically cycle between pages at a speed set for your most convenient, hands-free operation
- Large digits with high contrast for visibility in all lighting conditions
- Customizable user-profiles allow personalized and unique screen layouts
- Low power consumption (0,35W day, no backlight and 0,40W night with midlevel backlight)
- Five display configurations: single, dual and triple function, plus Gauge and Graph modes
- NMEA 0183 and 2000 compatible
- Monitor more than 50 marine and boat parameters including speed, water depth and temperature, wind direction and wind speed from the NMEA 2000 bus (optional)
- Supports 10Hz external GPS input



GMI 20 Part No: 010-01140-00



Split screen mode fore more data.



Shows engine and fuel information.



Easy to read with large, clear digits.

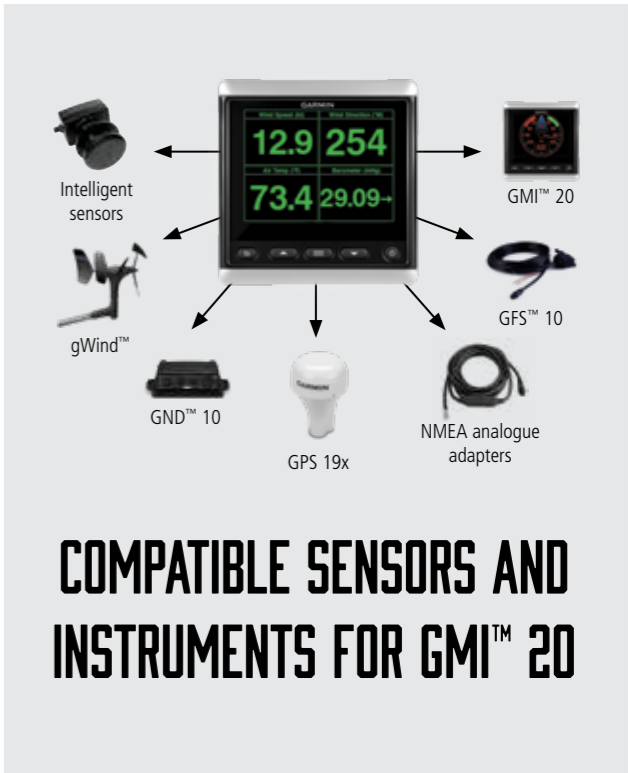
IDEAL DESIGN FOR BOTH POWER AND SAIL VESSELS

The GMI 20 has a bonded 4" color screen that displays depth, speed, wind, engine information and over 100 marine and vessel-specific parameters based on your preference. The glass-bonded finish lens prevents fogging and increases contrast.

Other features include a dedicated race timer that counts both down and up, with an internal beeper. Also included are two trim snap pieces cover options which allow you to match the GMI 20 with the GPSMAP 700/902/1002/1202/7600/8600 Series or legacy Garmin plotters.

Main Functions

- Large bright 4" QVGA color display
- LED backlighting
- Glass bonded lens to prevent fogging
- High contrast and up to 170° viewing angle
- Multiple color schemes and night modes
- New red-black and green-black schemes
- Extra large digits up to 47 mm high
- NMEA 0183 and 2000 certified
- Powered through NMEA 2000
- Supports 10Hz external GPS input
- Customizable data fields
- Customizable user profiles
- Low power mode to reduce power usage



COMPATIBLE SENSORS AND INSTRUMENTS FOR GMI™ 20

COMPLETE WIND SYSTEMS FOR EVERY NEED



GND 10 Part no.: 010-01226-00

Garmin gWind™ sensors feature a 3-bladed propeller and twin-fin design for more accurate True Wind Speed (TWS) in lighter air and more stable True Wind Angle (TWA). Garmin offers a wide selection of wind sensors designed for both sail and power vessels.

The GND 10 black box interface seamlessly integrates Nexus instruments and sensors with the Garmin family. It converts data between the Nexus network and NMEA 2000® to provide trouble-free compatibility between Nexus and Garmin products including the gWind and gWind Race wind transducers.

Main functions

GND 10

- Seamless integration between Nexus, Garmin products (NMEA 2000) and USB networks
- Simple plug-and-play operation with no user set-up or system configuration needed
- Integrated key features via the plotter for enhanced sailing functionality

gWind transducers

- Twin-fin design for superior performance and a propeller that lets you get accurate wind data even at low wind speed
- Robust and craftily designed to withstand rough elements



gWind Wireless 2

gWind Wireless 2
Part no.: 010-01616-00



GNX Wind



Compatible GPSMAP¹



gWind

gWind + GND 10
Part no.: 010-01227-00



gWind Race

gWind Race + GND 10
Part no.: 010-01228-00

Height: 1 m



GND 10



GNX Wireless Wind Pack

GNX Wind and gWind Wireless 2
Part no.: 010-01616-10



GNX Wireless Sail Pack 52

GNX Wind, GNX 20, gWind Wireless 2 and DST 800 (depth, speed & temperature)
Part no.: 010-01616-20



GNX Wireless Sail Pack 43

GNX Wind, GNX 20, gWind Wireless 2, GST 43 (speed & temperature), GDT 43 (depth & temperature) and NMEA 2000 adapters
Part no.: 010-01616-30



GNX Wired Sail Pack 43

GNX Wind, GNX 20, gWind, GST 43 (speed & temperature), GDT 43 (depth & temperature) and NMEA 2000 adapters
Part no.: 010-01248-60



GNX Wired Sail Pack 52

GNX Wind, GNX 20, gWind, GND 10 and DST800 (depth, speed & temperature)
Part no.: 010-01248-50



GMI Wired Start Pack 52

GMI 20, gWind, GND 10 and DST800 (depth, speed & temperature)
Part no.: 010-01248-10

¹ Compatible with GPSMAP 722/922/1022/1222/7400/8400 Series and GNX Wind

ACCESSORIES AND SENSORS FOR NETWORKS



Garmin 9-axis Heading Sensor

9-axis Heading Sensor Part no: 010-11417-20

The Garmin 9-axis heading sensor is our premium solution that is easy-to-install provides fast calibration, and exceptional heading accuracy. Heading output at 10 Hz and accuracy of plus or minus 2 degrees ensures your chart orientation and boat heading line will always match up with reality, even at lower speeds.

You can also be confident your heading information will remain accurate, even in rough sea conditions where your bow is pitching and rolling or — in sailboat applications — when heeled over. It also enables MARPA targeting and improves radar overlay alignment for Garmin radars. Installs easily with NMEA 2000® plug-and-play interface and a simple 2-step calibration process.

Its 9-axis MEMS technology also allows installation in any orientation located away from magnetic interference. Built to withstand bilge environments.

Main functions

- Provides premium heading accuracy, (plus or minus 2 degrees) even at lower speeds or when bow is pitching, rolling or heeling over
- Heading and Rate of Turn output at 10 Hz -- Trim and Heel output at 1 Hz
- Simple 2-step calibration process (only available on GPSMAPs)
- Ensures your chart orientation and boat heading line match up with reality
- Easy NMEA 2000® plug-and-play interface
- 9-axis MEMS technology allows installation in any orientation located away from magnetic interference
- Enables MARPA targeting and improves radar overlay alignment for Garmin radars
- IPX7 water rating; see Garmin.com/waterrating



SteadyCast™ Heading Sensor

SteadyCast™ Heading Sensor Part no.: 010-11417-10

Main functions

- Ensures bow orientation on your chartplotter matches your heading
- 10 Hz output rate and accuracy of plus or minus 3 degrees
- Easy NMEA 2000® plug-and-play interface
- Simple 2-step calibration process (only available on GPSMAPs)
- 9-axis MEMS technology allows installation in any orientation located away from magnetic interference
- IPX7 water rating; see Garmin.com/waterrating



GPS 19x & 19x HVS

GPS 19x HVS Part no.: 010-01010-00
GPS 19x Part no.: 010-01010-10

Main functions

- High-sensitivity 10Hz receiver
- 32 channels
- Can handle several GNSS systems, including GPS and GLONASS
- Available in two versions – NMEA 2000 or NMEA 0183
- Compatible with WAAS/EGNOS
- Designed to cope with even the toughest of conditions
- Easy to install, and can also be fitted below deck (not on metal/carbon decks)



Fuel Sensor GFS™ 10

GFS 10 Part no.: 010-00671-00

Main functions

- Compatible with all NMEA 2000 capable chartplotters and instruments
- The GFS 10 only works with petrol-driven engines
- Maximum flow rate: up to 190 litres/h per engine
- Minimum flow rate: 7,5 litres/h



GC 10 Marine Camera

GC10 Marine Camera Part no.: 010-11372-02
GC10 Marine Camera, reversed Part no.: 010-11372-03

Main functions

- Available in NTSC (US) and PAL (Europe) video standards
- Connects directly to GPSMAP 8400/7400/1222/1022/922/722 series
- Effective pixels: 768 x 494 (NTSC) / 752 x 582 (PAL)
- Resolution: 480 TV lines
- Standard and reverse image presentation
- Works equally well indoors and outdoors



GRID™ (Garmin Remote Input Device)

GRID Part no.: 010-01024-00

Main functions

- Compatible with GPSMAP 722/922/1022/1222/7400 and 8400 series
- Rotary knob and joystick for quick menu access and screen navigation
- Seamlessly navigate between multiple monitors from one station and keypad
- The station supports multiple keypads
- Full control – right in your palm
- Small size for captain's chair integration



Intelligent Transducers

For complete list of available transducers, please visit garmin.com

Main functions

- Supplies data for depth and water temperature
- Can read depths down to 180 metres
- Available in NMEA 0183 or NMEA 2000 versions
- Also available with log transducer metres



Garmin Card Reader

Garmin Card Reader Part no.: 010-01023-00

Main functions

- Single access point for 2 SD™ card slots
- A waterproof (IPX7), magnetic door allows the card reader to be mounted horizontally or vertically
- You can add multiple card readers for additional access points
- Compatible with the GPSMAP 8xxx series
- Typical current draw at 12 Vdc: 80 mA
- Maximum current draw at 12 Vdc: 240 mA
- Compass-safe distance: 36" (915 mm)



NMEA Analogue Adapters

Main functions

- Available for the following sensors:
 - GRA™ 10, Rudder angle adapter Part no.: 010-11324-00
 - GST™ 10, Speed through the water & Temperature adapter Part no.: 10 010-11328-00
- GET™ 10, Motor tilt adapter Part no.: 10 010-11325-00
- GFL™ 10, Fuel level adapter Part no.: 10 010-11326-00
- GBT™ 10, Bennett Trimplan adapter Part no.: 10 010-11327-00







REACTOR 40 SERIES – OUR MOST RESPONSIVE AUTOPILOT SYSTEM ON THE WATER



Reactor™ 40 hydraulic autopilot keeps you on course at cruising speeds, minimizes heading error, reduces power consumption and more, so you can be more comfortable while cruising. Solid-state 9-axis Attitude Heading Reference System (AHRS) sensors provide reliable vessel control in all sea and weather conditions and consistent heading accuracy within 2 degrees.

Our Shadow Drive™ technology lets you easily take back control of the helm just by turning the wheel — automatically disengaging the autopilot. It's easy to control from your compatible Garmin chartplotter, and Reactor 40 can follow an Auto Guidance¹ path with compatible chartplotters and BlueChart® g2 Vision® HD charts. Flexible mounting options² and quick, easy commissioning make installation easier.

For boats without a good, clean magnetic location to mount the CCU, Reactor 40 also supports heading inputs from third-party NMEA 2000® sensors, such as GPS compasses.

Main Functions

- 9-axis Attitude Heading Reference System (AHRS) sensors provide reliable vessel control in all sea and weather conditions and consistent heading accuracy within 2 degrees
- Shadow Drive technology automatically disengages the autopilot when you turn the wheel
- Control the autopilot directly from the screen of your compatible chartplotter
- Access Auto Guidance¹ with compatible chartplotters and BlueChart g2 Vision HD charts
- Supports third-party heading sensors or GPS compasses via the NMEA 2000 network
- Flexible mounting options² and minimal calibration required

¹Auto Guidance is for planning purposes only and does not replace safe navigation operations
²CCU should be installed away from magnetic interference

REACTOR 40 COREPACK GUIDE

REACTOR 40 – HYDRAULIC COREPACK

With GHC 20 -- Part no.: 010-00705-19 (pump sold separately)
Without GHC 20 -- Part no.: 010-00705-21 (pump sold separately)



Ideal for all types of hydraulically steered powerboats – inboards, outboards, stern drives. Page 46.

REACTOR 40 – HYDRAULIC WITH SMARTPUMP™ COREPACK

With GHC 20 -- Part no.: 010-00705-06
Without GHC 20 -- Part no.: 010-00705-68



One SmartPump fits most hydraulically steered boating applications. Page 46.

REACTOR 40 – MECHANICAL / RETROFIT / SOLENOID COREPACK

With GHC 20 -- Part no.: 010-00705-49
Without GHC 20 -- Part no.: 010-00705-48



Ideal for sailboats with direct or cable-actuated steering systems. Page 46.

REACTOR 40 – STEER-BY-WIRE COREPACKS

Standard with GHC 20 -- Part no.: 010-00705-86
Yamaha® Helm Master® with GHC 20 -- Part no.: 010-00705-87
Volvo Penta with GHC 20 -- Part no.: 010-00705-89
Standard without GHC 20 -- Part no.: 010-00705-90
Yamaha Helm Master without GHC -- Part no.: 010-00705-91
Viking® VIPER™ without GHC -- Part no.: 010-00705-92
Volvo Penta Without GHC™ -- Part no.: 010-00705-93

Fits vessels with steer-by-wire control systems, including Yanmar® JC10 Joystick, Teleflex® Optimus™, ZF® 2800, Yamaha® Helm Master and Volvo Penta®. Page 47.



COMPACT REACTOR 40 – HYDRAULIC COREPACKS

Standard Part no.: 010-00705-06
With GHC 20 Part no.: 010-00705-07
With GHC 20 and Shadow Drive Part no.: 010-00705-08



Designed for boats under 30 feet, easy-to-install CCU, providing flexibility and an extra set of hands. Page 47.

ACCESSORIES FOR REACTOR AUTOPILOTS

GHC™ 20 Control unit
Control your autopilot with up to three GHC 20 autopilot helm controller units. Compatible with all Garmin autopilots, for both motor- and sailboats.
GHC 20 Part No: 010-01141-00



GHC™ Remote control
This wireless black marine remote places functionality of your GHC 20 into the palm of your hand. It's rugged, waterproof and simple to use.
GHC Remote control Part No: 010-11146-20



GRF 10 Rudder sensor
Pair this GRF 10 rudder feedback sensor with your autopilot to provide rudder position feedback to detect and avoid rudder stops.
GRF 10 Rudder Feedback Sensor Part No: 010-11829-00





HYDRAULIC COREPACK – WITH OR WITHOUT SMARTPUMP™



This robust unit gives powerboat users an easy-to-use autopilot system to rely on for navigation. The optional SmartPump features a more powerful, brushless motor-driven pump that is suitable for most users. It offers Intelligent Rudder Rate Technology (IRRT) which adjusts the rudder speed to the speed of your boat to ensure safer and more stable operation. Available with or without GHC™ 20.

Main Functions

- Complete packages designed for hydraulically steered powerboats and sailboats
- Solid-state 9-axis AHRS, reacts to the sea to hold course, even when the boat is pitching and rolling
- Minimizes heading error, course deviation, rudder movement, power consumption, while providing a comfortable ride
- Mounts in any orientation
- Minimal commissioning and calibration takes just five minutes
- One SmartPump™ fits most hydraulically steered boating applications¹
- NMEA 2000 interface

- Small, brushless SmartPump™ delivers better thermal performance, higher reliability, and lower power consumption¹
- Optimal performance for all steering cylinder sizes from 4 to 17 cubic inches¹
- Intelligent Rudder Rate Technology (IRRT)
- Patented Shadow Drive™ technology keeps you in control even when autopilot is engaged
- Provides advanced features to compatible Garmin chartplotters such as route following, route engage, and Autopilot Virtual Device
- Connects to up to 3 GHC™ 20 control units

¹ Smartpump corepack only.



MECHANICAL COREPACK – RELIABLY ACCURATE



You never know when an extra crew member can come in handy. Maybe the wind picks up, and you have to leave the wheel to raise the sails or pull in fenders. Even in calm conditions, you sometimes need to hand over to someone else. That's where this below-deck autopilot system comes in, ideally suited for sailboats or powerboats with direct or cable-actuated steering systems. Available with or without GHC™ 20.

Main Functions

- Ideal for sailboats with direct or cable-actuated steering systems
- Retrofit with your existing autopilot actuator or use with one of several Garmin linear actuator options (sold separately)
- Solid-state 9-axis AHRS, reacts to the sea to hold course, even when the boat is pitching and rolling
- Minimizes heading error, course deviation, rudder movement, power consumption, while providing a comfortable ride
- Mounts in any orientation
- Minimal commissioning and calibration takes just five minutes
- Engineered from corrosion-resistant components

- NMEA 2000 interface
- Enter your boat's displacement or its planning speed, and Reactor will take into consideration the various steering characteristics that are required
- Provides advanced features to compatible Garmin chartplotters such as route following, route engage, and Autopilot Virtual Device
- Connects to up to 3 GHC™ 20 control units
- When used with a Garmin chartplotter with optional BlueChart® g2 Vision® HD charts, the Reactor autopilot can automatically follow an Auto Guidance path
- Add optional GHC™ wireless remote for autopilot control anywhere on your boat



STEER-BY-WIRE – AUTOPILOT WITH SHADOW DRIVE™



These corepacks bring our Reactor 40 autopilot technology to vessels with select steer-by-wire control systems, including Yanmar® Electric Power Steering for the JC10 Joystick system, Teleflex® Optimus™ systems, Yamaha® Helm Master™ systems, Volvo Penta® Inboard Performance Systems and ZF® 2800 Pod Drive steering systems.

Main Functions

- Solid-state 9-axis AHRS, reacts to the sea to hold course, even when the boat is unstable
- Standard corepack: supports steering systems from Yanmar® JC10 Joystick system, Teleflex® Optimus™ systems and ZF® 2800 system
- Corepack for Yamaha®: supports Yamaha Helm Master systems
- Corepack for Volvo Penta®: supports Volvo Penta IPS and stern drive joystick systems
- Minimises heading error, course deviation, rudder movement, power consumption, while providing a comfortable ride

- Mounts in any orientation
- NMEA 2000 interface
- Minimal commissioning and calibration takes just five minutes
- Provides advanced features to compatible Garmin chartplotters such as route following, route engage, and Autopilot Virtual Device
- Connects to up to 3 GHC™ 20 control units
- Add optional GHC™ wireless remote for autopilot control anywhere on your boat



COMPACT – HYDRAULIC COREPACKS FOR SMALLER BOATS



Designed for boats less than 30 feet long to provide relief from manually holding the wheel to maintain course in heavy currents or winds. Solid-state 9-axis AHRS technology delivers less heading error, course deviation, rudder movement, power consumption and a more comfortable ride. Easy to install with flexible mounting options and quick, easy commissioning via a compatible chartplotter or GHC 20.

Main Functions

- Solid-state 9-axis AHRS, reacts to the sea to hold course, even when the boat is unstable
- Designed for boats less than 30 feet long
- Available in 3 pack configurations:
 - Compact Reactor Hydraulic Autopilot with GHC 20 and Shadow Drive™, Compact Reactor Hydraulic Autopilot with GHC 20 and Compact Reactor Hydraulic Autopilot without GHC
- Provides an extra set of hands, relief from manually holding the wheel to remain on course in heavy currents or winds
- Easy-to-install CCU provides flexible mounting options and quick, easy commissioning
- NMEA 2000 interface

- Minimal commissioning and calibration takes just five minutes
- 1 L geared pump supports hydraulic steering cylinders up to 10 cubic inches
- Provides advanced features to compatible Garmin chartplotters such as route following, route engage, and Autopilot Virtual Device
- Easy to add GHC 20 and Garmin patented Shadow Drive at any time if not initially included
- Add optional GHC™ wireless remote for autopilot control anywhere on your boat





FANTOM RADARS WITH MOTIONSCOPE™ TECHNOLOGY



The 40 W solid-state Garmin GMR Fantom open array radars feature MotionScope technology. Using the Doppler effect, it detects and highlights targets in different colors as they move toward or away from you to help you identify and avoid potential collisions.

GMR Fantom 4 Part no.: K10-00012-13
GMR Fantom 6 Part no.: K10-00012-14

GMR Fantom Pedestal Part no.: 010-01364-00
GMR Fantom 4 Antenna Part no.: 010-01365-00
GMR Fantom 6 Antenna Part no.: 010-01366-00

Main functions

- 40 W Solid-state open-array radars with pedestal
- Fully integrates with select Garmin chartplotters
- MotionScope™ technology uses the Doppler effect to detect moving targets so you can avoid potential collisions
- Provides radar data overlay onto charts (autopilot or heading sensor recommended)
- Auto Bird Gain setting helps locate flocks of birds at the water's surface – indicating game fish
- Pulse Compression allows for higher resolution while maximizing energy on target
- Target Size setting allows users to adjust- and increase the size of targets
- MARPA setting enables tracking of 10 targets simultaneously
- Dynamic Auto Gain and Sea Filter settings automatically adjust to your surroundings for optimal performance in all conditions
- Dual radar capability allows you to have multiple radars running at the same time
- Dual range gives you the ability to see both close- and long-range at the same time
- Excellent close- and long-range detection from 20 ft to 72 nm
- 24 or 48 rpm – for fast screen update rate
- Instant turn on, no delay from warming up as with magnetron radars, and low power consumption
- Easy to install and easy to use
- Antenna diameter:
 - GMR Fantom 4: 4 ft
 - GMR Fantom 6: 6 ft
- Vertical beam width: 25°
- Horizontal beam width:
 - GMR Fantom 4: 1.8°
 - GMR Fantom 6: 1.25°
- Power input: 10-32 V
- GMR Fantom is compatible with the GPSMAP 722/922/1022/1222/7400 and 8400 Series

The 18” and 24” 40 W solid-state Garmin GMR Fantom dome radars feature MotionScope technology. Using the Doppler effect, it detects and highlights targets in different colors as they move toward or away from you to help you identify and avoid potential collisions.

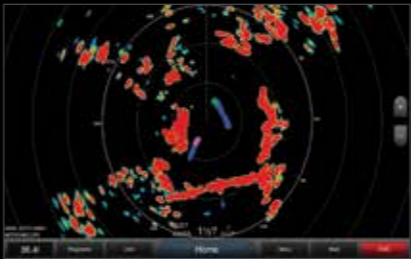


GMR Fantom 24 Part no.: 010-01707-00
GMR Fantom 18 Part no.: 010-01706-00

Main functions

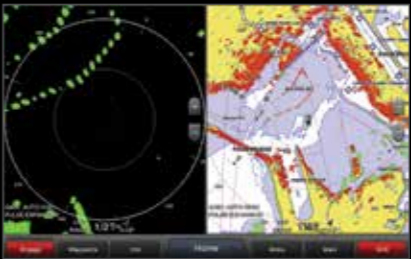
- 40 W Solid-state dome radars
- Fully integrate with select Garmin chartplotters
- MotionScope™ technology uses the Doppler effect to detect moving targets so you can avoid potential collisions
- Provides radar data overlay onto charts (autopilot or heading sensor recommended)
- Auto Bird Gain setting helps locate flocks of birds at the water's surface – indicating game fish
- Pulse Compression allows for higher resolution while maximizing energy on target
- Target Size setting allows users to adjust- and increase the size of targets
- MARPA setting enables simultaneous tracking of 10 targets
- Excellent close- and long-range detection from 6 m to 48 nm
- Low power consumption, instant turn on and no warm up delay
- 24 or 48 rpm – for fast screen update rate
- Dynamic Auto Gain and Sea Filter settings automatically adjust to your surroundings for optimal performance in all conditions
- Dual radar support allows you to select data from 1 of 2 different radar sources
- Dual range gives you the ability to see both close- and long-range at the same time
- Easy to install and easy to use
- Vertical beam width: 25°
- Horizontal beam width:
 - GMR Fantom 18: 5.2°
 - GMR Fantom 24: 3.7°
- Power input: 10-32 V
- GMR Fantom 18 and 24 are compatible with the GPSMAP 722/922/1022/1222/7400 and 8400 Series

SPECIAL FEATURES FANTOM SERIES



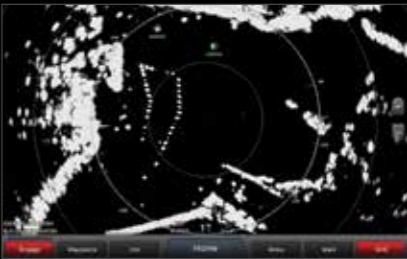
MotionScope™

Using the Doppler effect, it detects and highlights targets in different colors as they move toward or away from you to help you avoid potential collisions.



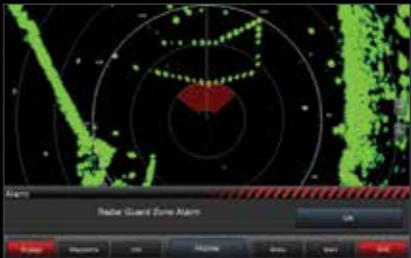
Dual Range with Overlay

Shows close and long range split screen images with radar data overlay at the same time.



MARPA

Tracks up to 10 selected targets, helping you keep track of other vessels and avoid collisions.



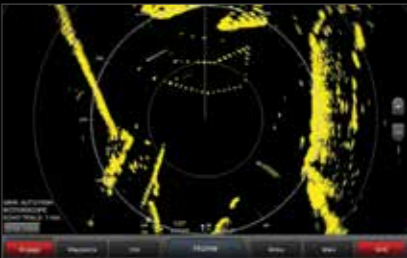
Guard Zone

Defined by a preset distance of an area around your boat, if an object enters the safety zone you will receive an alarm.



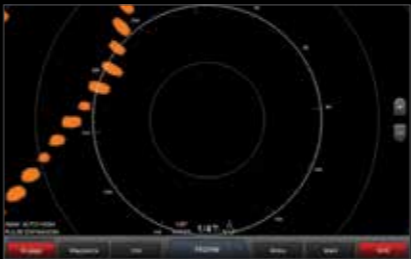
Auto Bird Gain

With MotionScope™ technology you can locate birds at the water's surface with extreme precision, indicating game fish.



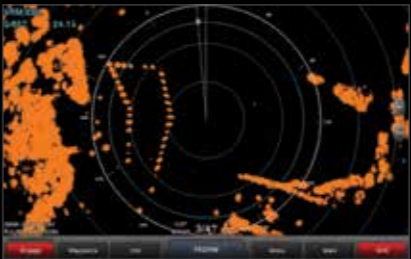
Echo Trails

A historical “trail” is left on the screen to quickly help you identify moving targets and potential collision threats.



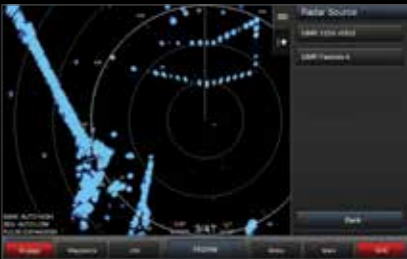
Target Size

Maximizing energy on targets, increasing their size and opportunity to identify them at longer range.



VRM and EBL

Variable range markers (VRM) and electronic bearing lines (EBL) allow rapid measurements of distance and bearing to vessels and land.



Dual Radar Support

Dual radars provide the flexibility to install two different radars on the boat for best performance at any range.



GMR™ xHD2 DELIVERS UNMATCHED RANGE AND SUPERB TARGET SEPARATION IN ANY WEATHER



GMR 424 xHD2, 4kW, 4ft Part no.: K10-00012-08
GMR 624 xHD2, 6kW, 4ft Part no.: K10-00012-09
GMR 626 xHD2, 6kW, 6ft Part no.: K10-00012-10
GMR 1224 xHD2, 12kW, 4ft Part no.: K10-00012-11
GMR 1226 xHD2, 12kW, 6ft Part no.: K10-00012-12
GMR 2524 xHD2, 25kW, 4ft Part no.: K10-00012-15
GMR 2526 xHD2, 25kW, 6ft Part no.: K10-00012-16

GMR 42x xHD2 Pedestal, 4kW Part no.: 010-01333-00
GMR 62x xHD2 Pedestal, 6kW Part no.: 010-01333-01
GMR 12xx xHD2 Pedestal, 12kW Part no.: 010-01333-02
GMR 25xx xHD2 Pedestal, 25kW Part no.: 010-01333-10
GMR xHD2, 4' Antenna Part no.: 010-01333-03
GMR xHD2, 6' Antenna Part no.: 010-01333-04

Our powerful xHD2 open array radars combine advanced technology with unparalleled functionality, delivering excellent range (up to 96 nautical miles) and outstanding target separation – even in heavy fog or rain. Designed for serious fishermen and cruisers, these reliable radars are invaluable aids for tracking islands, coastal lines, other boats or impending weather. They can even help you find hot fishing spots.

Main functions

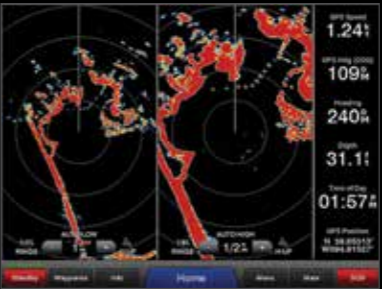
- High definition with outstanding target separation
- Accurate and consistent target positions
- Integrated dual radar for more flexibility
- Pulse Expansion software
- Radar Overlay
- Auto Bird Gain
- 8-bit true color display
- MARPA support (optional heading sensor required)
- Integrated Auto Gain and Sea Filter features
- Echo Trails
- Programmable Antenna Parking Position
- Silent rotation and reliable operation
- Power input: 10-32 V
- Rotation speed: 24 or 48 rpm
- Withstands winds of up to 80 knots
- Easy to install and easy to use
- Antenna diameter:
 - GMR 2524 / 1224 / 624 / 424 xHD2 (4 ft)
 - GMR 2526 / 1226 / 626 / 426 xHD2 (6 ft)
- Transmit power:
 - GMR 2524 / 2526 xHD2: 25 kW
 - GMR 1226 / 1224 xHD2: 12 kW
 - GMR 626 / 624 xHD2: 6 kW
 - GMR 424 xHD2: 4 kW
- Vertical beam width: 23°
- Horizontal beam width:
 - GMR 2524 / 1224 / 624 / 424 xHD2: 1.8°
 - GMR 2526 / 1226 / 626 xHD2: 1.1°
- Range: 4xx / 6xx / 12xx: 72 nm max. / 20 m min.
- Range: 25xx: 96 nm max. / 20 m min.

SPECIAL FEATURES xHD2 SERIES



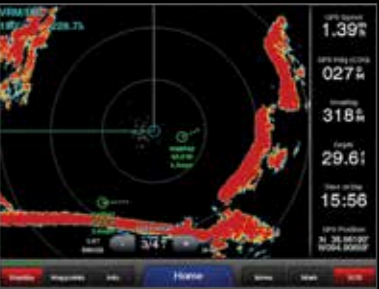
Radar Overlay

Overlays a radar image on the chartplotters map page, verifying cartographic data.



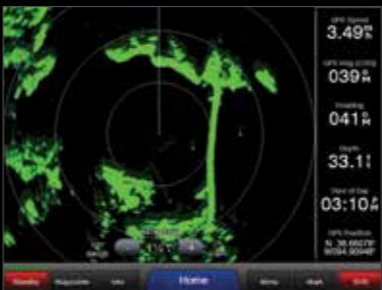
Dual Range

Shows close and long range split screen images at the same time, using a single antenna.



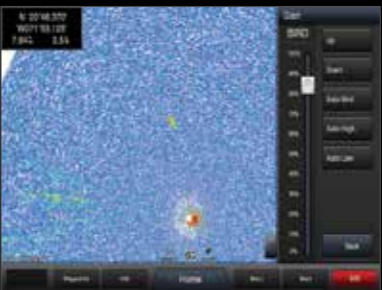
MARPA

Tracks up to 10 selected targets, helping you keep track of other vessels and avoid collisions.



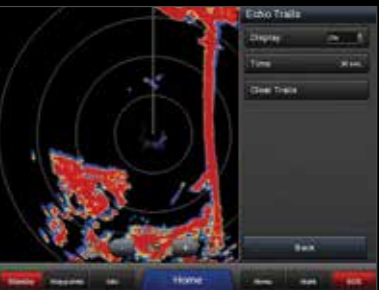
True 8-bit colors

Its customizable color imagery helps you distinguish large targets from small ones and enhances target separation.



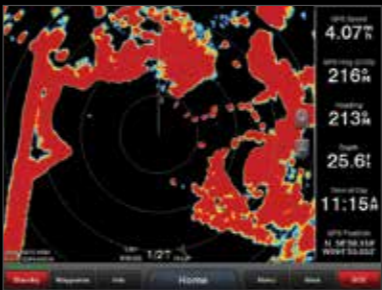
Auto Bird Gain

Smart feature that helps you to locate birds at the water's surface, indicating a hot fishing spot.



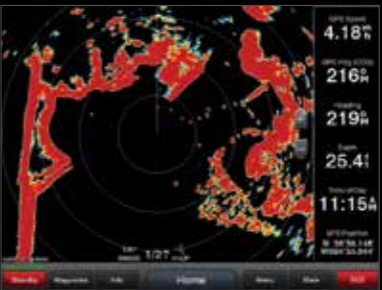
Echo Trails

A historical "trail" is left on the screen to quickly help you identify moving targets and potential collision threats.



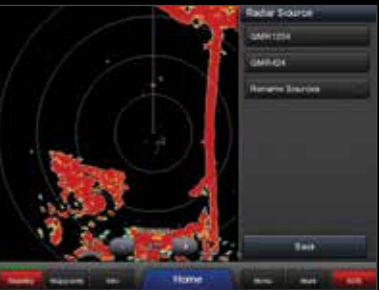
With Pulse Expansion

Maximizing energy on targets, increasing their size and opportunity to identify them at longer range.



Without Pulse Expansion

Turning off Pulse Expansion gives a higher resolution image when desired.



Dual Radar Support

Dual radars provide the flexibility to install two different radars on the boat for best performance at any range.



WHAT RADAR DOES YOUR BOAT WANT?

Radome or open array

The radomes compact format adapts easily to the limited space of a small craft, making it ideal for day trips, coast-line sailing or spending some time at your favorite fishing spot.

Open array radars offer enhanced performance and greater range, detecting small or moving targets quickly and with extreme precision – even in poor weather. Mainly suited for experienced mariners and longer sessions at sea.

Garmin xHD technology

Our radars incorporate xHD technology for superior digital processing. Thanks to optimization of the pulse width and repetition frequency, the image provided is far more detailed than that of conventional radars.

Regardless of distance, echoes on your chartplotter will be clearer and targets better defined, making Garmin an invaluable aid when tracking land, other boats, weather or potential collision threats.

EASY-TO-USE WITH ADVANCED OPEN ARRAY FEATURES



GMR 24 xHD Part no.: 010-00960-00

GMR 18 xHD Part nr.: 010-00959-00

GMR 24 xHD and 18 xHD combine advanced digital processing with intuitive and simple settings, so you can enjoy great performance without a lot of technical know-how. Ideal for amateurs as well as professionals, they detect the smallest obstacles up close or far away with extreme precision.

Main functions	
<ul style="list-style-type: none">• 4 kW transmit power for high sensitivity• MARPA support¹, Auto Bird Gain, Echo Trails, Dynamic Auto Gain and True 8-bit Colors• Horizontal beam width:<ul style="list-style-type: none">- GMR 18 xHD: 5.2°- GMR 24 xHD : 3.7°	<ul style="list-style-type: none">• Vertical beam width: 25°• Max. range: 48 nm• Min. range: 20 m• Rotation speed: 24 or 48 rpm• Withstands winds up to 100 knots

¹ Optional heading sensor required.

POWER AND CLARITY IN A COMPACT DOME RADAR



GMR 18HD+ Part no.: 010-01719-00

The streamlined GMR™ 18HD+ dome radar delivers 4 kW of transmit power and clear echo definition at all ranges to enhance safety and situational awareness.

Main functions	
<ul style="list-style-type: none">• Dynamic Auto Gain automatically adjusts to your surroundings for optimal performance in all conditions• Dynamic Sea Filter automatically adjusts gain to changing sea conditions• Overlays the radar image on the chartplotter map page (autopilot or heading sensor is recommended for best results)	<ul style="list-style-type: none">• MARPA function (external heading sensor required)• Beam angles: 5.2° horizontal, 25° vertical• Max range: 36 nautical miles• Minimum range: 20 meters• Rotation speed: 24 revolutions/minute• No complex user settings; easy to install and start using







SPACE-**SAVING** VHF COMMUNICATION STATIONS



300, 010-00756-10
300 AIS, 010-00757-11

The VHF 300 and VHF 300 AIS are space-saving “black box” VHF’s, that offer support for multiple communication stations and options for dual band AIS receivers. The design allows out-of-sight installation, enabling you to save valuable space on your instrument panel. The entire device can be operated from a GHS™ 10, a full-function remote control that also works as a microphone.

Main functions

- “Black box” design saves space at the helm
- Up to 25W transmission output
- All functions and settings are managed via the GHS 10 (supplied)
- 4" active speaker with volume knob (supplied)
- Initiate a VHF call directly from your Garmin NMEA 2000 plotter and VHF
- Full Class D Digital Selective Calling (DSC) with built-in DSC receiver
- NMEA 2000®/NMEA 0183 interface

- Position tracking — locate and follow up to three other boats
- Two-way hailer function with compatible speaker
- The VHF 300 and VHF 300 AIS are compatible with the GHS 10 and GHS 20
- Records 90 seconds of the latest call
- Available in either black or grey
- Three ports for additional VHF stations
- Use as intercom between stations



RELIABLE FIXED-MOUNT VHF MARINE RADIOS



VHF 210 AIS, 010-01654-00
VHF 210, 010-01751-01
VHF 110, 010-01653-00

Communication is critical on the water. The easy-to-install VHF 110 and VHF 210 radios plug and play via the NMEA 2000® network to compatible Garmin chartplotters and MFDs to provide standard Class D Digital Selective Calling (DSC) functionality. The VHF 210 AIS radio also displays AIS (Automatic Identification Systems) on the chartplotter to enhance communication, situational awareness and collision avoidance. With 25 W transmit power; the fixed-mount marine radios give fishermen, sailors and cruisers confidence in emergency situations.

Main functions

- Fixed-mount with plug and play via the NMEA 2000® network
- VHF 210 AIS displays AIS (Automatic Identification Systems) on the chartplotter
- Standard Class D Digital Selective Calling (DSC) functionality (distress calling and direct calling with user programmed MMSI)
- 25 W of transmit power
- Speaker microphone audio power: 94 dBA

- Frequency bands: Pre-programmed with international marine channels, plus 10 NOAA weather channels
- Operating voltage: 12.0 VDC (volts of direct current)
- Current drain: standby: 350 mA; receive: 600 mA; transmit: 6.0 A at high power (25 W); 2.0 A at low power (1 W)
- Designed to complement the latest GPSMAP® 722/922, GPMAP 1022/1222, GPSMAP 7400 and GPSMAP 8400 chartplotters and MFD's

TAKE CONTROL – WITH OR WITHOUT WIRE¹



GHS 10, 010-11187-10

GHS 20, 010-11189-10
GHS 20 handheld, 010-11189-11

The GHS 20 and 10 give you full-function control of your VHF. The GHS 20 is a wireless remote handset that lets you maintain control as you move about on board. Designed for quick and easy use, the system features a volume, squelch and channel adjustment knob and a dedicated channel 16/9 selection key. The GHS 20 and 10 are compatible with the VHF 300, 300 AIS and 200 AIS. Both models support Digital Selective Calling (DSC).

Main functions

- Sharp 2" LCD display
- Dedicated buttons for channels and frequencies
- Multi-function buttons for other settings and functions
- Dedicated button for selecting channel 16/9

- Also has a microphone that provides you with intercom options when connected to a speaker
- Knob for adjusting volume, squelch and channels

¹ Only GHS 20 has wireless connection.



COMMUNICATION IS CRITICAL ON THE WATER



GHS 11, 010-01759-01

The GHS 11 allows full function of your VHF 210 radio from a remote location. No complex components, just a simple design that includes soft keys, a 2-in. diagonal dot matrix display and a coiled cable that stretches from about 1 foot to nearly 5 feet. A rotary/push knob for volume, squelch and channel selection make for ease of use with a dedicated button for access to channels 16/9. All buttons and knobs resemble those of the VHF radio.

Main functions

- Sharp 2" LCD display
- Dedicated buttons for channels and frequencies
- Multi-function buttons for other settings and functions
- Dedicated button for selecting channel 16/9

- Also has a microphone that provides you with intercom options when connected to a speaker
- Knob for adjusting volume, squelch and channels



RECEIVE/TRANSMIT AIS DATA FOR FULL COVERAGE



AIS 600 Part no.: 010-00865-00

Raise the level of safety on board with the AIS 600 and patented ClearTrack™ technology, that guarantees uninterrupted signal reception. This gives you a good overview of the area even when visibility is very poor. The AIS 600 is a “black box” that can be installed out of sight behind the bulkhead. It is operated directly from your plotter screen. The integrated splitter allows you to connect both AIS and VHF to the same antenna.

Main functions

- Helps during navigation and to avoid collisions
- NMEA 2000® certified
- Integral splitter box means that it is sufficient to have one VHF antenna for both AIS 600 and VHF radio
- Integrated AIS target data with information displayed directly on the chartplotter

- ClearTrack™ technology ensures that reception is uninterrupted
- Alarm (CPA) via Radar to avoid collisions
- Integral GPS receiver
- Dual channel AIS receiver
- Class A and class B reception



SAFE MONITORING OF TRAFFIC IN YOUR VICINITY



AIS 300 Part no.: 010-00892-00

AIS 300 can receive AIS data from other vessels in the area. It helps you to avoid collisions and navigate safely, even in poor visibility. The “black box” construction can be installed out of sight behind the bulkhead and can be operated directly from your chartplotter. It comes with an integrated splitter that allows you to connect both AIS and VHF to the same antenna.

Main functions

- Helps during navigation and to avoid collisions
- NMEA 2000-certified
- Integral splitter box means that it is sufficient to have one VHF antenna for both AIS 300 and VHF radio
- Integrated AIS target data with information displayed directly on the chartplotter

- Alarm (CPA) via Radar to avoid collisions
- Dual channel AIS receiver
- Class A and class B reception

AUTOMATIC IDENTIFICATION SYSTEM

Improved communication, safety and collision avoidance at sea. AIS shows you other boats immediately on your marine chart. Make your boat visible to others with the AIS 600 transponder.

The Automatic Identification System (AIS) enables the exchange of navigation status data between vessels and land-based stations. Ships equipped with AIS can identify and track each other wherever they meet. Already, commercial vessels over 300 gross tonnage are obliged to carry AIS, and a growing number of small

commercial and leisure boats are also opting for it to increase safety. Your vessels name, size, use, speed, heading and more is sent by VHF to other traffic in the vicinity. With an AIS receiver on board, anyone can see the position and bearing of other boats and ships nearby.



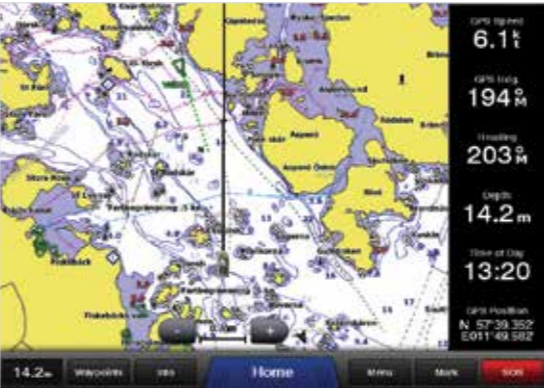
Collision warnings

Risks are clearly indicated, which greatly minimises the risk of collision.



Identification

Sends detailed vessel data, allowing easy identification.



Clear overview

Shows you the surroundings and the vessels around your boat.



Social seamanship

Spot your friends quickly and enjoy direct ship-to-ship communication.





TAKE YOUR FISHING TO NEW DEPTHS

The GSD 26 Spread Spectrum technology gives you the best of both worlds – better target separation in deep waters, and the option of tuning to specific frequencies to target certain species of fish. It also offers optimal target definition, bottom contour analysis and signal noise suppression at greater depths, and gives you faster screen updates and instant interpretation of what’s below.



GSD 26 Part no.: 010-00958-00

Main functions

- The GSD 26 digital sonar incorporates revolutionary digital Spread Spectrum technology
- Works with a dual-channel single receiver
- The dual transmitter allows simultaneous and independent dual frequency display
- Manually adjustable frequency from 28 kHz to 210 kHz
- Powerful digital signal delivers fantastic signal reproduction and performance in deep water
- Optional output power between 300W and 3kW
- Compatible with Airmar’s new transducers with CHIRP technology
- Waterproof (IPX6)



PROFESSIONAL SONAR TECHNOLOGY

The GSD 24 incorporates modern digital technology to give superior target separation and bottom structure analysis. Compatible with many different transducers, this new sonar module has optional transmission output (600W, 1kW and 2kW) for pin-point accuracy at depths of down to 1,500 metres. Whether you are looking for fish or hazards below the surface, you'll see everything in exceptionally sharp detail.



GSD 24 Part no.: 010-00957-00

Main functions

- Displays depth, fish echoes and bottom contours
- Produces a clear image with fantastic signal reproduction and performance in deep water
- Two frequencies: 50 and 200kHz
- Optional output power of 600W, 1kW or 2kW
- Max. depth 1,500 m¹
- Upgrading adapter from GSD 22 to GSD 24 supplied
- Simple installation with Garmin Marine Network™
- Ability to fine tune the 50kHz frequency from 45-55kHz and the 200kHz from 190-210kHz to better align the sonar and the transducer

¹ Maximum depth dependent on transducer, water salinity, bottom type and other water conditions.



TAILORED FOR SERIOUS SPORT FISHING

Designed for the serious sportfisherman, the GSD 25 premium sonar module is a remote network solution that provides outstanding fishfinding and bottom tracking capabilities for boats with networked GPSMAP 8000 or GPSMAP 7600 Series chartplotters. It offers true dual-channel 1kW CHIRP, plus ClearVü and SideVü scanning sonar with CHIRP technology for the clearest scanning images on the water.



GSD 25 Part no.: 010-01159-00

Main functions

- Designed for the serious offshore sportfisherman
- Premium remote network sonar solution
- Provides outstanding fishfinding and bottom tracking capabilities
- Includes dual-channel 1kW CHIRP, plus SideVü and ClearVü sonar scanning with CHIRP technology
- Get target details so precise, you can actually distinguish between small and closely spaced fish at key fishing depths
- Max. depth 1,500 m¹
- For use with the Garmin GPSMAP 8400 Glass Helm Series

¹ Maximum depth dependent on transducer, water salinity, bottom type and other water conditions.



THE ALL-SEEING BLACK BOX SONAR

The Garmin GCV 10 black box sonar adds both SideVü and ClearVü with CHIRP scanning sonar technology to your compatible Garmin chartplotter. CHIRP technology sweeps through a range of frequencies to give you an ultra-clear sonar picture of objects, structure and fish that pass below (ClearVü) and to the sides (SideVü) of the boat. Together with your plotters traditional sonar, you get an excellent search and confirmation tool for advanced fishfinding in both fresh and saltwater.



GCV 10 w/o CV & SV transducer Part no.: 010-01156-10

Main functions

- For use with Garmin compatible chartplotter
- Includes 12 pin all-in-one ClearVü/SideVü™ transducer with 20 ft. cable
- 3 network ports provided for advanced networking capability
- Excellent search and confirmation tool for advanced fishfinding in both fresh and saltwater
- Provides both ClearVü and SideVü with CHIRP scanning sonar technology for a high-frequency, ultra-clear sonar picture of objects, structure and fish that pass below (ClearVü) and to the sides (SideVü) of the boat
- Jackplate and step mount available (both sold separately)



STRIKER™ Plus 7sv Part no.: 010-01784-00
STRIKER™ Plus 7cv Part no.: 010-01783-00

Striker Plus 9sv Part no.: 010-01785-00

Striker Plus 5cv Ice Part no.: 010-01782-20
Striker Plus 5cv Part no.: 010-01782-00

Striker Plus 4 Part no.: 010-01780-00
Striker Plus 4cv Part no.: 010-01781-00

STRIKER PLUS – THE FISHFINDER WITH GPS THAT LETS YOU CREATE YOUR OWN FISHING MAPS

The industry's leading fishfinder series with built-in GPS and CHIRP traditional and CHIRP scanning sonar now adds Quickdraw Contours map drawing and built-in Wi-Fi on 7" & 9" models to access free ActiveCaptain mobile app.

The rugged STRIKER PLUS Series is designed to not only see fish and structure below the boat, but also to mark your favorite fishing spots and easily navigate back to them. With GPS on board, you also have access to accurate speed over the ground (SOG) data.

Nobody knows the waters you fish better than you and your fellow

fishermen. While you are trolling the shorelines and the depths, Quickdraw Contours mapping software creates HD fishing maps of the places you've been with 1' contours.

Get nearly photographic images of what passes below and beside your boat with CHIRP ClearVü and CHIRP SideVü scanning sonars.

Use built-in Wi-Fi to pair with the ActiveCaptain app for smart notifications, access to Quickdraw Contours Community data and more.

Main functions

- Available in 4", 5", 7" or 9" bright sunlight-readable displays
- Built-in Garmin CHIRP ClearVü™ (cv models) and CHIRP SideVü (sv models) scanning sonars for nearly photographic images of what passes below and beside your boat
- Built-in Garmin CHIRP traditional sonar for crystal-clear images and remarkable target separation

- Built-in Quickdraw Contours mapping software that lets you create and store up to 2 million acres of maps with 1' contours
- Built-in Wi-Fi® (7" & 9" models) for access to ActiveCaptain™ app so you can receive smart notifications¹, access Garmin Quickdraw™ Community, transfer waypoints and software update notifications

- Built-in GPS lets you mark waypoints, create routes and view boat's speed
- Rugged design for every fishing environment
- Transom and trolling motor mounts included

Portable kit Part no.: 010-12462-01

¹ When paired with a compatible smartphone
Wi-Fi® is a registered trademark of the Wi-Fi Alliance.

PANOPTIX ALL-SEEING SONAR TRANSDUCERS

Whichever transducer you choose, Panoptix will certainly open up a new world for you. The comparison table will help you select the model that best suits your needs.

PS22-TR TRANSDUCER



Panoptix™ PS22-TR transducer lets you see all around your boat and below it — in real time — with LiveVü Forward and LiveVü Down. Just mount it to the shaft or motor barrel of your trolling motor.

PS22-TR Part no.: 010-01945-00

PS51-TH WITH FRONTVÜ



Multibeam thru-hull transducer with premium FrontVü forward-looking sonar. Helps you avoid running aground by displaying the bottom ahead of your boat in real time on your compatible chartplotter.

PS51-TH Part no.: 010-01753-00

PS60 THRU-HULL DOWN



With the PS60 thru-hull Down transducer, you get three remarkable views, LiveVü Down, RealVü 3D Down and RealVü 3D Historical. The unique thru-hull installation is ideal for coastal or offshore fishermen with larger boats.

PS60 Down Part no.: 010-01406-00

PS31 FORWARD



PS31 Forward allows you to see the bottom, structure and fish in front of your boat — in real time; even while stationary. You get three impressive views, LiveVü-, FrontVü- and RealVü 3D Forward. Both transom and trolling motor mount is included.

PS31 Forward Part no.: 010-01284-01

PS30 DOWN



PS30 Down allows you to see baitfish and large target fish swimming around under your boat — in real time; even while stationary. You get three different views, LiveVü Down, RealVü 3D Down and RealVü 3D Historical.

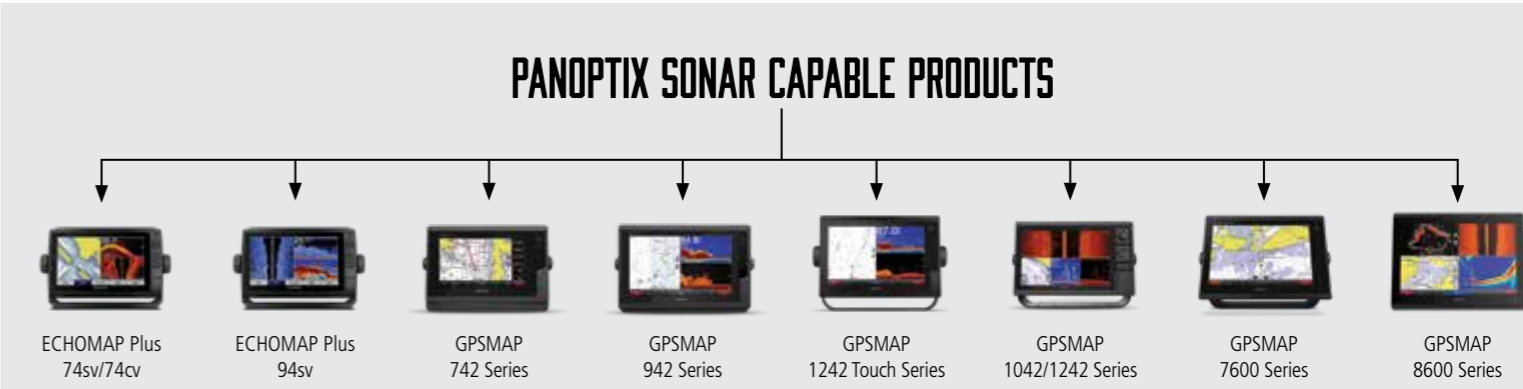
PS30 Down Part no.: 010-01284-00

PS21-TR & PS21-TM FORWARD



The PS21 transducers allows you to see fish swimming and attacking your lure with LiveVü Forward and to see obstructions for collision avoidance with FrontVü — up to 100 feet away. The compact and light PS21 comes with a trolling motor (TR) or a transom mount (TM).

PS21-TR Forward Part no.: 010-01588-00
PS21-TM Forward Part no.: 010-01588-01







CAN YOUR ACTION CAMERA DO THIS?



VIRB 360

If it's worth remembering, it's worth a VIRB® 360. With one touch or a voice command, this rugged, waterproof⁴ camera captures 360-degree video in up to 5.7K resolution with 360-degree audio, and it includes built-in sensors for augmented reality G-Metrix™ data overlays. Advanced image stabilization² ensures a smooth video regardless of camera movement. Videos and photos are automatically stitched¹ in camera, enabling fast sharing as well as instant livestreaming⁵ with the free, easy-to-use VIRB® Mobile app.

VIRB ULTRA 30

Get spectacular footage with the ultra HD action camera for your active lifestyle. Compact, lightweight, waterproof⁴ and easy to use, VIRB Ultra 30 captures 4K/30fps video and features G-Metrix™ technology, which adds to the experience by letting you overlay gauges and graphs with action data. Built-in image stabilization² makes for crisp, steady footage. The touchscreen display and high-sensitivity microphone are fully functional through the waterproof case. With one touch, you can even live-stream⁵ in HD on YouTube® to share your footage with the world.

VIRB action cameras capture your adventures with proof of how far, how fast and how high you went. These waterproof¹ and rugged compact cameras fit every activity and all conditions with no additional case needed.



quatix 5 Part no.: 010-01688-40
quatix 5 Sapphire Part no.: 010-01688-42

QUATIX 5 – HAS YOU COVERED ON LAND AND WATER

Specifically designed for the water, the quatix® 5 multisport GPS smartwatch offers comprehensive connectivity with compatible Garmin chartplotters and other devices to provide autopilot control, remote waypoint marking, sail racing assistance, data streaming — including speed, depth, temperature and wind — and much more.

With built-in activity profiles and performance metrics for paddle boarding, kayaking and canoeing, quatix 5 has you covered for whatever sport you want to track. Satellite navigation and tracking functions combine with a 3-axis compass, gyroscope and barometric altimeter to guide you with confidence, on and off the water. Also includes connected features² such as smart notifications, automatic uploads to Garmin Connect™ online fitness community and personalization through free watch faces and apps from our Connect IQ™ store.

Compact and stylish with the QuickFit™ band system, it also sports advanced fitness features and wrist-based heart rate monitoring.

Main functions		
Virb 360		Virb Ultra
<ul style="list-style-type: none">Resolution up to 5.7K or 5K unstitched and 4K with in-camera stitching¹Up to 15-megapixel resolution providing high-quality, 360-degree images4 built-in microphones capture 360-degree audioAdvanced image stabilization² ensures a smooth video regardless of camera movementBuilt-in sensors provide G-Metrix™ data overlays in 360-degree augmented reality³Rugged camera is waterproof to 10 meters⁴, small and lightweightLivestream to YouTube® or Facebook® Live with compatible smartphone or tablet	<ul style="list-style-type: none">Start and stop recording with simple 1-touch buttonsEasy-to-use, free VIRB® Mobile app and desktop software let you edit, stabilize, share and add data overlays to videosUse the free VIRB® Mobile app to preview your shot live, and control your camera from a compatible smartphone or tabletUse voice control⁶ to start and stop recording, take photos and moreRecord videos in modes such as slow motion, time lapse, manual and moreSunlight-readable display shows battery, storage, mode and connectivity status	<ul style="list-style-type: none">VIRB Ultra 30 enables hands free shooting by using voice commands to start/stop recording, take a photo or tag footage3-axis image stabilization captures steady footage up to 1080p/60fpsUltra HD 4K/30fps footage with 1.75-inch touchscreen display that lets you see what is being recordedShoot hands-free using voice control¹ to start/stop recording, take photos or remember momentsBuilt-in sensors and GPS capture G-Metrix™ data to prove how far, how high and how fast you wentHigh-sensitivity microphone captures clear audio in and out of the waterproof case

¹ On-device stitching only up to 4K/30 FPS.
² Stabilization requires mobile or desktop VIRB® app before sharing.
³ Augmented reality overlays require mobile or desktop VIRB® app before sharing.
⁴ See Garmin.com/waterrating
⁵ Livestreaming only available on compatible Apple® devices.
⁶ Voice control available for English (U.S., U.K.), French, Italian, German, Spanish, Swedish, Japanese and Mandarin.

Main functions		
<ul style="list-style-type: none">Provides comprehensive connectivity with compatible Garmin chartplotters and other devices to offer autopilot control, remote waypoint marking and data streaming, which includes speed, depth, temperature and windSail racing assistance includes virtual starting line, distance to start line, race countdown timer and tack assistBuilt-in FUSION-Link™ Lite app controls connected StereoActive™ stereo products as well as other ANT®-enabled stereo models (RA70/BB100)Connected features² include smart notifications, automatic uploads to Garmin Connect™ online fitness community and personalization through free watch faces and apps from our Connect IQ™ store	<ul style="list-style-type: none">Includes Elevate™ wrist-based heart rate¹ and built-in GPS; features QuickFit™ band system, stainless steel bezel, buttons and rear caseWater-rated to 10 ATM (100 meters)³Preloaded activity profiles for all your sports and adventures, including paddle boarding, kayaking and canoeingGet key stats at your fingertips with the performance widget that shows your training status, training load and moreBattery performance: up to 2 weeks in smartwatch mode (depending on settings), up to 24 hours in GPS mode and up to 60 hours in UltraTrac™ battery saver mode	quatix 5 Sapphire <ul style="list-style-type: none">Includes both silicone and stainless steel QuickFit™ bandsWi-Fi®-enabled for automatic activity uploads directly to Garmin Connect™ when connected to wireless networksScratch resistant sapphire lens

¹ 1 See Garmin.com/ataccuracy
² When paired with compatible smartphone; see Garmin.com/BLE
³ See Garmin.com/waterrating

Wi-Fi® is a registered trademark of the Wi-Fi Alliance.



THE INFORMATION YOU NEED IN-SIGHT



¹ For situational awareness only. Users should view data on the display at a glance and always focus on surroundings.

Garmin Nautix™ enhances your situational awareness by placing important information exactly where you want it, either below or above your direct line of sight¹. Offering unobtrusive yet immediately accessible data, the Garmin Nautix™ is ideal for fishing, sailing or cruising.

Main functions

- Featherweight device attaches easily to either side of most sunglasses and eyewear frames to put key marine data in your line of sight
- Displays speed, heading, water depth and temperature, wind direction and engine RPM – streamed from a compatible onboard Garmin device
- Glove- and wet weather-friendly touch panel allows you to swipe between data displays

- Provides hands-free, in-view display to enhance situational awareness
- Color display ensures readability in all conditions; can be worn with polarized or prescription lenses
- Garmin Nautix™ is compatible with GNX™ Wind instrument, GPSMAP® 7400- and GPSMAP® 8400 series
- Durable, weather-resistant construction designed for boating. Battery life over 8 hours (always on)



VERSATILE GPS FOR BOTH LAND AND SEA



GPSMAP 276Cx Part no.: 010-01607-00

¹ Weather tracking not available in all areas.
² See Garmin.com/ble.
Wi-Fi® is a registered trademark of the Wi-Fi Alliance.

Versatile GPSMAP® 276Cx all-terrain navigator with advanced GPS and GLONASS reception tracks your position in challenging environments. It has a large, sunlight-readable 5" screen plus built-in barometric altimeter and 3-axis compass. It is preloaded with a worldwide basemap and free 1-year BirdsEye Satellite Imagery subscription. Advanced mapping, connectivity and flexible mounting options are available; water-rated to IPX7.

Main functions

- Internal antenna with GPS and GLONASS satellite reception
- Supports optional external antenna (sold separately)
- Worldwide basemap with free 1-year BirdsEye Satellite Imagery subscription
- Supports Garmin TOPO maps and HuntView, BlueChart® g2 HD marine charts, turn by turn directions on City Navigator®, Custom Maps, raster maps and vector maps

- Supports Active Weather forecasts and animated weather tracking¹
- Pairs with your compatible mobile device² for automatic uploads, smart notifications and more; also compatible with Wi-Fi® and ANT+® technology for integration of external sensors
- Powered by AA battery or optional rechargeable battery pack



TOP CHOICE HANDHELDS FOR ALL MARINERS



GPS 73 Part no.: 010-01504-00
78s Part no.: 010-00864-01
78 Part no.: 010-00864-00

Boaters and watersport enthusiasts everywhere swear by the GPSMAP 78 handhelds. They feature a bright 2.6" LCD color display with built-in worldwide basemap and a special MOB (man overboard) button. What's more, these waterproof devices are designed to float. SailAssist for GPS 73 include virtual starting line, heading line, countdown timers and tack assist.

Main functions

- 2.6" LCD color display (78/78s), 2.6" 4 level gray LCD (73)
- Highly sensitive GPS receiver for optimum reception and performance
- Slot for microSD™ card and USB interface
- Sunrise/sunset, estimated time of arrival, other calculations and marine data
- MOB (man overboard) button: shows distance and bearing to the position where the button was pressed

- Can be enhanced with BlueChart® g2 HD charts
- NMEA 0183 support
- Wireless data transfers
- SailAssist™ for GPS 73 include virtual starting line, heading line, countdown timers and tack assist
- Marine alarms (including off course, anchor drag and more)



2-WAY SATELLITE COMMUNICATORS



inReach SE®+ Part no.: 010-01735-00
inReach Explorer®+ Part no.: 010-01735-11

inReach SE®+ is the satellite communicator that uses 100% global Iridium satellite coverage for 2-way messaging anywhere in the world. In case of emergency, the interactive SOS allows you to communicate back and forth and receive confirmation that help is on the way. Navigate with detailed, preloaded, inReach Explorer®+ has TOPO maps¹, follow routes, mark waypoints and finds your way back.

Main functions

- Satellite communicator and GPS navigator with 100% global Iridium satellite coverage
- View preloaded DeLorme TOPO maps¹ overlaid with GPS waypoints and routes, right on the full-color display
- Built-in, high-sensitivity GPS provides robust navigation with TOPO, location and tracking data within 5 meters and better accuracy than a paired/companion mobile device; follow routes, drop waypoints and find your way back with a high-detail bread crumb trail

- Send and receive text messages while beyond cell phone range
- Use the MapShare site to track and share your location online with family and friends, so they can ping your device and send you messages
- Pair with mobile devices² using the free Earthmate® app for access to TOPO maps and U.S. NOAA charts, color aerial imagery and more. Additional data for hunters, such as game

¹ Preloaded DeLorme TOPO maps are not compatible with other Garmin devices. Other Garmin maps not compatible with this device.
² See Garmin.com/inreachfaq for compatibility.



MFD Chartplotters



	GPSMAP 8624/8424	GPSMAP 8622/8422	GPSMAP 8617/8417
Display size (diagonal)	24"	22"	17"
Display type and resolution (pixels)	WUXGA - 1920 x 1200	FHD - 1920 x 1080	WUXGA - 1920 x 1200
Touch- or keyed panel	Multitouch	Multitouch	Multitouch
GPS receiver	10 Hz GPS/GLONASS, external	10 Hz GPS/GLONASS, external	10 Hz GPS/GLONASS, external
Standard GPS antenna	External	External	External
Number of waypoints	5000	5000	5000
Number of routes	100	100	100
J1939 Support	Yes	Yes	Yes
Garmin SmartMode™	Yes	Yes	Yes
Digital Switching support	Yes	Yes	Yes
NMEA 2000 compatible	Yes	Yes	Yes
NMEA 0183 compatible	Yes	Yes	Yes
Garmin Marine Network compatible	Yes	Yes	Yes
Preloaded map	Worldwide Basemap	Worldwide Basemap	Worldwide Basemap
BlueChart® g2 HD compatible	Yes	Yes	Yes
BlueChart® g2 Vision® HD compatible	Yes	Yes	Yes
Auto Guidance 3.0 (req. g2 Vision HD)	Yes	Yes	Yes
ActiveCaptain™ support	Yes	Yes	Yes
Sailing Features	Yes	Yes	Yes
Wi-Fi® and ANT™ wireless connectivity	Yes, built-in	Yes, built-in	Yes, built-in
GRID™ (Garmin Remote Input Device) compatible	Yes	Yes	Yes
FLIR® and Axis® IP camera support	Yes	Yes	Yes
FUSION-Link™ support	Yes	Yes	Yes
Video input	1 BNC composite 1 HDMI (HDCP compliant)	1 BNC composite 1 HDMI (HDCP compliant)	1 BNC composite 1 HDMI (HDCP compliant)
Video output	1 HDMI	1 HDMI	1 HDMI
AIS and DSC support	Yes	Yes	Yes
Sonar module support	Yes	Yes	Yes
Supported frequency (sonar)	Dependent on optional sonar module	Dependent on optional sonar module	Dependent on optional sonar module
Transmit power	Dependent on optional sonar module	Dependent on optional sonar module	Dependent on optional sonar module
Panoptix™ support	Yes	Yes	Yes
Data card slots	2 SD™ cards (requires optional card reader)	2 SD™ cards (requires optional card reader)	2 SD™ cards (requires optional card reader)
Water rating	IPX 7	IPX 7	IPX 7
Mounting options	Flat or Flush	Flat or Flush	Flat or Flush
Power supply	10-35 V	10-35 V	10-35 V
Typical current draw at 12 Vdc:	6.1 A	3.9 A	2.8 A
Connections	Built-in wireless connectivity, NMEA 2000: 1 port, NMEA 0183: 4 in and 2 out, Marine network: 4 ports, USB: 1 port, Video in: 1 BNC composite and 1 HDMI (HDCP compliant), Video out: 1 HDMI, J1939: 1 port	Built-in wireless connectivity, NMEA 2000: 1 port, NMEA 0183: 4 in and 2 out, Marine network: 4 ports, USB: 1 port, Video in: 1 BNC composite and 1 HDMI (HDCP compliant), Video out: 1 HDMI, J1939: 1 port	Built-in wireless connectivity, NMEA 2000: 1 port, NMEA 0183: 4 in and 2 out, Marine network: 4 ports, USB: 1 port, Video in: 1 BNC composite and 1 HDMI (HDCP compliant), Video out: 1 HDMI, J1939: 1 port

Chartplotters & Combos

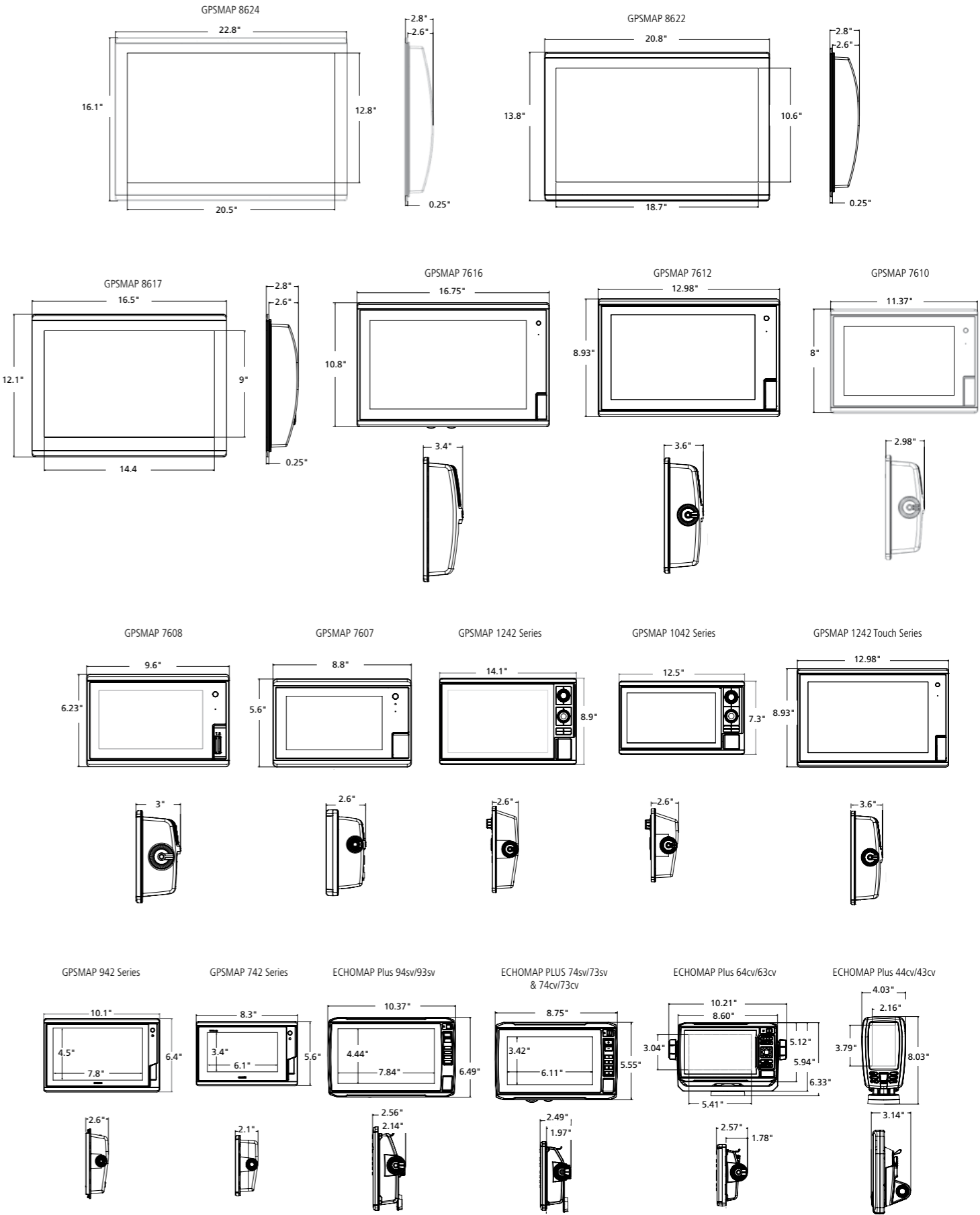


	GPSMAP 7616xsv/7616	GPSMAP 7612xsv/7612	GPSMAP 7610xsv/7610	GPSMAP 7608xsv/7608	GPSMAP 7607xsv/7607
Display size (diagonal)	16"	12"	10"	8"	7"
Display type and resolution (pixels)	WXGA - 1280 x 800	WXGA - 1280 x 800	WXGA - 1280 x 800	WSVGA - 1024 x 600	WVGA - 800 x 480
Touch- or keyed panel	Multitouch widescreen	Multitouch widescreen	Multitouch widescreen	Multitouch widescreen	Multitouch widescreen
GPS receiver	10 Hz GPS/GLONASS, internal	10 Hz GPS/GLONASS, internal	10 Hz GPS/GLONASS, internal	10 Hz GPS/GLONASS, internal	10 Hz GPS/GLONASS, internal
Standard GPS antenna	Internal (input for external)	Internal (input for external)	Internal (input for external)	Internal (input for external)	Internal (input for external)
Number of waypoints	5000	5000	5000	5000	5000
Number of routes	100	100	100	100	100
J1939 Support	Yes	Yes	Yes	Yes	Yes
NMEA 2000 compatible	Yes	Yes	Yes	Yes	Yes
NMEA 0183 compatible	Yes	Yes	Yes	Yes	Yes
Garmin Marine Network compatible	Yes	Yes	Yes	Yes	Yes
Preloaded map	BlueChart® g2 & LakeVü HD	BlueChart® g2 & LakeVü HD	BlueChart® g2 & LakeVü HD	BlueChart® g2 & LakeVü HD	BlueChart® g2 & LakeVü HD
Auto Guidance 3.0 (req. g2 Vision HD)	Yes	Yes	Yes	Yes	Yes
ActiveCaptain™ support	Yes	Yes	Yes	Yes	Yes
Sailing Features	Yes	Yes	Yes	Yes	Yes
Compatible with gWind™ Transducers	Yes	Yes	Yes	Yes	Yes
Wi-Fi® and ANT™ wireless connectivity	Yes, built-in	Yes, built-in	Yes, built-in	No	No
GRID™ (Garmin Remote Input Device) compatible	Yes	Yes	Yes	Yes	Yes
Wireless remote compatible	Yes	Yes	Yes	Yes	Yes
FLIR® camera support	Yes	Yes	Yes	Yes	Yes
FUSION-Link™ support	Yes	Yes	Yes	Yes	Yes
Video input	2 composite	2 composite	2 composite	1 composite	1 composite
Video output	1 DVI-D	1 DVI-D	1 DVI-D	N/A	N/A
AIS and DSC support	Yes	Yes	Yes	Yes	Yes
Sonar module support	Yes	Yes	Yes	Yes	Yes
Supported frequency (sonar) ¹	50/77/200 kHz, CHIRP (low, medium, high), CHIRP ClearVü, CHIRP SideVü	50/77/200 kHz, CHIRP (low, medium, high), CHIRP ClearVü, CHIRP SideVü	50/77/200 kHz, CHIRP (low, medium, high), CHIRP ClearVü, CHIRP SideVü	50/77/200 kHz, CHIRP (low, medium, high), CHIRP ClearVü, CHIRP SideVü	50/77/200 kHz, CHIRP (low, medium, high), CHIRP ClearVü, CHIRP SideVü
Transmit power	1 kW traditional, 1 kW CHIRP (xsv-model)	1 kW traditional, 1 kW CHIRP (xsv-model)	1 kW traditional, 1 kW CHIRP (xsv-model)	Up to 1 kW (xsv-model)	Up to 1 kW (xsv-model)
Panoptix™ support	Yes	Yes	Yes	Yes	Yes
Preloaded Quickdraw Contours software	Yes	Yes	Yes	Yes	Yes
Data card slots	2 SD™ cards	2 SD™ cards	2 SD™ cards	2 SD™ cards	2 microSD™ cards
Water rating	IPX 7	IPX 7	IPX 7	IPX 7	IPX 7
Mounting options	Bail, Flush or Flat	Bail, Flush or Flat	Bail, Flush or Flat	Bail, Flush or Flat	Bail, Flush or Flat
Power supply	10-32 V	10-32 V	10-32 V	10-32 V	10-32 V
Typical current draw at 12 Vdc:	3.8 A	2.5 A	1.95 A	1.8 A	1.5 A
Connections	Built-in wireless connectivity, NMEA 2000: 2 ports, NMEA 0183: 2 in and 2 out, Marine Network: 2 ports, Video in: 2 composite, Video out: 1 DVI-D, J1939: 1 port	Built-in wireless connectivity, NMEA 2000: 1 port, NMEA 0183: 2 in and 2 out, Marine Network: 2 ports, Video in: 2 composite, Video out: 1 DVI-D, J1939: 1 port	Built-in wireless connectivity, NMEA 2000: 1 port, NMEA 0183: 2 in and 2 out, Marine Network: 2 ports, Video in: 2 composite, J1939: 1 port	NMEA 2000: 1 port, NMEA 0183: 2 in and 2 out, Marine Network: 2 ports, Video in: 1 composite, J1939: 1 port	NMEA 2000: 1 port, NMEA 0183: 2 in and 2 out, Marine Network: 2 ports, Video in: 1 composite, J1939: 1 port

Combos



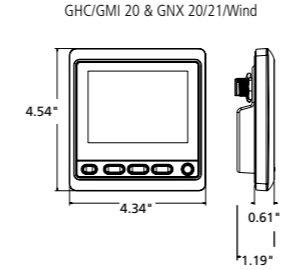
	GPSMAP 1242xsv/1242 & GPSMAP 1042xsv/1042	GPSMAP 1242xsv Touch/1242 Touch & GPSMAP 942xs/942 & GPSMAP 742xs/742	ECHOMAP Plus 94sv/93sv	ECHOMAP Plus 74sv/73sv and 74cv/73cv	ECHOMAP Plus 64cv/63cv and 44cv/43cv
Display size (diagonal)	12" (1242xsv/1242) 10" (1042xsv/1042)	12" (1242xsv Touch/1242 Touch) 9" (942xs/942) 7" (742xs/742)	9"	7"	6,2" (64cv/63cv) 4,3" (44cv/43cv)
Display type and resolution (pixels)	WXGA - 1280 x 800 (1242xsv/1242) WSVGA - 1024 x 600 (1042xsv/1042)	WSVGA - 1280 x 800 (1242xsv Touch/1242 Touch) WSVGA - 1024 x 600 (942xs/942) WVGA - 800 x 480 (742xs/742)	WVGA - 800 x 480	WVGA - 800 x 480	WVGA - 800 x 480 (64cv/63cv) QVGA - 272 x 480 (44cv/43cv)
Touch- or keyed panel	Keyed	Multitouch	Keyed Assist Multitouch	Keyed Assist Multitouch	Keyed
GPS receiver	10 Hz GPS/GLONASS, internal	10 Hz GPS/GLONASS, internal	5 Hz GPS/GLONASS, internal	5 Hz GPS/GLONASS, internal	5 Hz GPS/GLONASS, internal
Standard GPS antenna	Internal (input for external)	Internal (input for external)	Internal (input for external)	Internal (input for external)	Internal (input for external)
Number of waypoints	5000	5000	3000	3000	3000
Number of routes	100	100	100	100	100
NMEA 2000 compatible	Yes	Yes	Yes	Yes	Yes (64cv/63cv)
NMEA 0183 compatible	Yes	Yes	Yes	Yes	Yes
Garmin Marine Network compatible	Yes	Yes	No	No	No
Preloaded map	BlueChart® g2 & LakeVü HD	BlueChart® g2 & LakeVü HD	BlueChart® g2 (94sv) LakeVü HD (93sv)	BlueChart® g2 (74sv, 74cv) LakeVü HD (73sv, 73cv)	BlueChart® g2 (64cv, 44cv) LakeVü HD (63cv, 43cv)
BlueChart® g2 HD compatible	Yes	Yes	Yes	Yes	Yes
BlueChart® g2 Vision® HD compatible	Yes	Yes	Yes	Yes	Yes
Auto Guidance (req. g2 Vision HD)	Yes	Yes	Yes	Yes	Yes
ActiveCaptain™ support	Yes	Yes	No	No	No
SailAssist	Yes	Yes	Yes	Yes	Yes (64cv/63cv only)
Wi-Fi® and ANT™ wireless connectivity	Yes	Yes	Yes (WiFi only)	Yes (WiFi only)	Yes (WiFi only 64cv/63cv) No (44cv/43cv)
GRID™ (Garmin Remote Input Device) compatible	Yes	Yes	No	No	No
Wireless remote compatible	Yes	Yes	No	No	No
FLIR® camera support	Yes	Yes	No	No	No
FUSION-Link™ support	Yes	Yes	Yes	Yes	Yes (64cv) No (44cv/43cv/63cv)
Video input	1 BNC	1 BNC Video Output: 1 HDMI (1242 Touch / 1242xsv Touch)	No	No	No
AIS and DSC support	Yes	Yes	Yes	Yes	Yes
Traditional HD ID 77/200	Yes (xsv)	Yes (xs and xsv)	Yes	Yes	Yes
Traditional HD ID 50/200	Yes (xsv)	Yes (xs and xsv)	Yes	Yes	Yes
Traditional CHIRP	Yes (xsv)	Yes (xs and xsv)	Yes	Yes	Yes
CHIRP ClearVü	Yes (xsv)	Yes (xs and xsv)	Yes	Yes	Yes
CHIRP SlideVü	Yes (xsv)	No	Yes	Yes (72sv)	No
Dual Channel CHIRP	No	No	No	No	No
Optional sonar support	Yes	Yes	No	No	No
Internal Sonar Sharing	Yes (xsv)	Yes (xs and xsv)	Yes, with other 7" and 9" ECHOMAP Plus models only	Yes, with other 7" and 9" ECHOMAP Plus models only	No
Transmit power	1 kW traditional, 1 kW CHIRP (xsv)	1 kW traditional, 1 kW CHIRP (xs)	Up to 500 W (RMS)	Up to 500 W (RMS)	Up to 500 W (RMS)
Panoptix™ support	Yes	Yes	Yes	Yes	No
Preloaded Quickdraw Contours software	Yes	Yes	Yes	Yes	Yes
Data card slots	2 SD™ cards	2 MicroSD™ cards	1 MicroSD™ card	1 MicroSD™ card	1 MicroSD™ card
Water rating	IPX 7	IPX 7	IPX 7	IPX 7	IPX 7
Mounting options	Bail or Flush	Bail, Flush or Flat	Bail or Flush	Bail or Flush	Bail or Flush
Power supply	10-32 V	10-32 V	10-20 V	10-20 V	10-20 V
Typical current draw at 12 Vdc:	2.5 A	1.9 A 2.5 A (1242 Touch / 1242xsv Touch)	1.95 A	1.8 A	1.5 A
Connections	Built-in wireless connectivity, NMEA 2000: 1 port, NMEA 0183: 1 port, Marine Network: 2 ports, Video in:1 BNC	Built-in wireless connectivity, NMEA 2000: 1 port, NMEA 0183: 1 port, Marine Network: 1 port, Video in:1 BNC J1939 (1242 Touch / 1242xsv Touch)	NMEA 2000: 1 port, NMEA 0183: 1 in and 1 out Marine Network: 1 port (for Panoptix)	NMEA 2000: 1 port, NMEA 0183: 1 in and 1 out Marine Network: 1 port (for Panoptix)	NMEA 2000: 1 port (64cv/63cv), NMEA 0183: 1 in and 1 out



Instruments

GMI 20 & GHC 20 Autopilot Control	
Physical size	4.34" x 4.54" x 1.19"
Display resolution	QVGA 320 x 240
Display type	LCD
Display size	4"
Waterproof according to standard	IPX7
Alarm	Yes
Flush & Flat mounting	Yes
NMEA compatible	Yes, NMEA 0183 and NMEA 2000
Current consumption 12V	2.5 W

GNX Wind, GNX 20 & GNX 21	
Physical dimensions	4.34" x 4.54" 1.19"
Weight	230 g
Display size, WxH	4" diagonal
Display type	21-Inverted LCD, monochrome 20-Standard LCD, monochrome
Waterproof according to standard	IPX7
Glass bonded display	Yes
Temperature range	From -15°C to 70°C
Compass-safe distance	209 mm
Voltage range	9-16 V (from NMEA 2000)
Power consumption	350mW (no backlight) 450mW (with backlight)
Mounting options	Flat or Flush

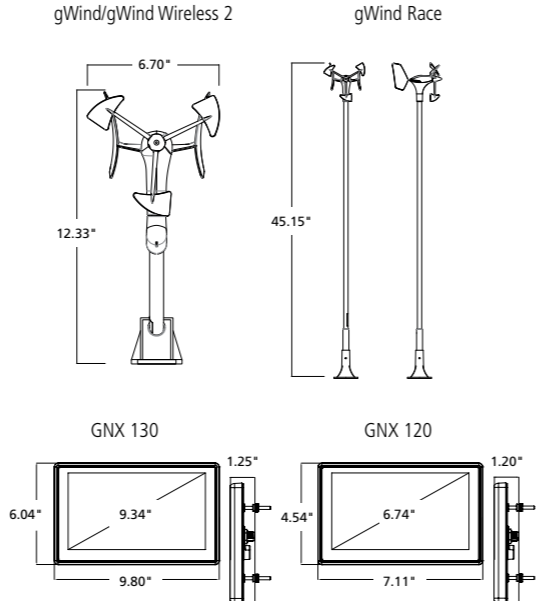


gWind

	gWind Transducer	gWind Race Transducer	gWind Wireless 2 Transducer	GND 10
Unit dimensions, WxHxD	610 x 345 mm	H=45.15"	6.70" x 12.33"	6.73" x 3.58" x 1.97"
Weight	260 g	320 g	350 g	196 g
Cable length	25 m	25 m	N/A	NMEA 2000 (2m) Nexus network (5m)
Waterproof	IPX6	IPX6	IPX6	IPX6
Temp range	From -15°C to 70°C	From -15°C to 70°C	From -15°C to 70°C	From -15°C to 70°C
Electrical				
Voltage range	9-16V	9-16V	N/A	9-16V
Power usage	0.33W	0.33W	Solar powered	0.85W
Compass safe distance	N/A	N/A	N/A	0.1m
Accuracy angle	Better than ±1.5°	Better than ±1.5°	Better than ±1.5°	N/A
Speed	Better than ±3%	Better than ±3%	Better than ±3%	N/A
NMEA 2000 Load Equivalency Number (LEN)	N/A	N/A	N/A	4
Connectivity				
Wireless connectivity	No	No	Yes	No

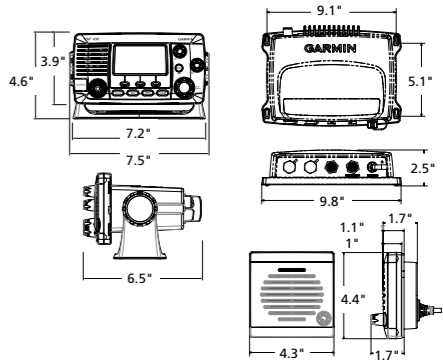
Instruments

	GNX 120	GNX 130
Bonded display	Yes	Yes
Display type	Inverted LCD, monochrome	Inverted LCD, monochrome
Physical size (WxH)	7.11" x 4.54"	9.80" x 6.04"
Weight	380 g	820 g
Digit height	51mm	2.83"
LCD size (diagonal)	159mm \ 6.3"	236mm \ 9.3"
LCD % of total size	53%	53%
Number of big digits	4	4
Functions per page	1 to 3	1 to 3
Total data fields	50+	50+
Background colors	RGB	RGB
Sunlight visible	Yes	Yes
Display update rate	Up to 10Hz	Up to 10Hz
Operating temp	-15°C to 70°C	-15°C to 70°C
Power consumption	0.36 W day \ 0.4 W night	0.36 W day \ 0.4 W night
Voltage range	9-16 V (from NMEA 2000)	9-16 V (from NMEA 2000)



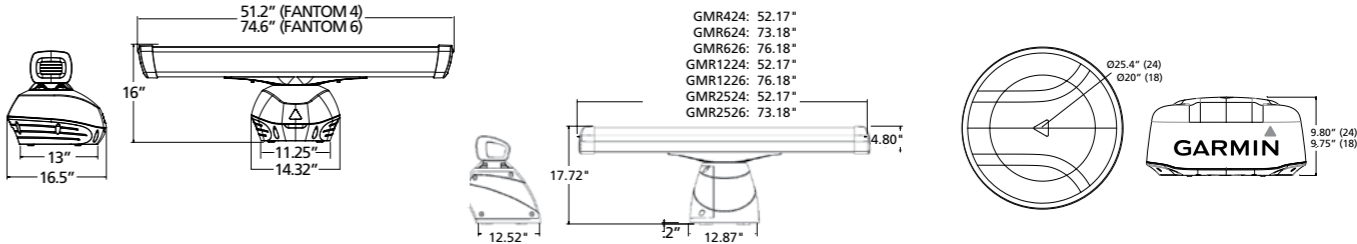
AIS & VHF

	AIS 600	AIS 300	VHF 300 AIS & 300	VHF 210 AIS	VHF 210	VHF 110
Display size diagonal	No	No	Yes	3.2"	3.2"	2.5"
Adjustable backlighting	No	No	Yes	Yes	Yes	Yes
Class D DSC opportunities	No	No	Yes	Yes	Yes	Yes
Position tracking	No	No	Yes	Yes	Yes	Yes
Position enquiry	No	No	Yes	Yes	Yes	Yes
Up to 25W transmission output	No	No	Yes	Yes	Yes	Yes
Dedicated button for channel 16	No	No	Yes	Yes	Yes	Yes
Can be connected to foghorn	No	No	Yes	Yes	Yes	No
NMEA 0183 interface	Yes	Yes	Yes	Yes	Yes	Yes
NMEA 2000 interface	Yes	Yes	Yes	Yes	Yes	Yes
Speaker/Microphone with cable	No	No	Yes	Yes	Yes	Yes
Supports GHS 10	No	No	Yes	No	No	No
Hailer function	No	No	Yes, 30 W/4 ohm	Yes, 20W/4 ohm	Yes, 20W/4 ohm	No
Intercom options	No	No	Yes	No	No	No
ATIS options	No	No	Yes	Yes	Yes	Yes
AIS-transponder	Yes	No	No	Yes	No	No
Integral AIS receiver	Yes	Yes	Yes (300 AIS) No (300)	Yes	Yes	No
Integral splitter box	Yes	Yes	No	No	No	No



Radars

	GMR Fantom 6 / 4	GMR 2526 / 1226 / 626 xHD2	GMR 2524 / 1224 / 624 / 424 xHD2	GMR Fantom 24 / 18	GMR 24 xHD / 18 xHD	GMR 18HD+
Transmit Power	40W	25kW / 12kW / 6kW	25kW / 12kW / 6kW / 4kW	40W	4kW	4kW
Dimensions (diameter)	1928 mm (Fantom 6) 1328 mm (Fantom 4)	1923 mm	1310 mm	645 mm (Fantom 24) 508 mm (Fantom 18)	645 mm (24 xHD) 508 mm (18 xHD)	508 mm
Rotation Speed (revolutions/min)	24 & 48	24 & 48	24 & 48	24 & 48	24 & 48	24
Weight	23,6 kg (Fantom 6) 21,3 (Fantom 4)	29 kg	28,1	9,5 kg (Fantom 24) 7,7 kg (Fantom 18)	9,5 kg (24 xHD) 7,7 kg (18 xHD)	7,7 kg
Horizonatl beamwidth	1.25° (Fantom 6) 1.8° (Fantom 4)	1.1°	1.8°	3.7° (Fantom 24) 5.2° (Fantom 18)	3.5° (24 xHD) 5° (18 xHD)	5°
Vertical beamwidth	23°	23°	23°	25°	25°	25°
Maximum/Minimum range	72 NM / 6 m	96 NM / 20 m (2526) 72 NM / 20 m (1226/626)	96 NM / 20 m (2524) 72 NM / 20 m (1224/624/424)	48 NM / 6 m	48 NM / 20 m	36 NM / 20 m
Waterproof according to standard	IPX6	IPX6	IPX6	IPX7	IPX7	IPX7
Power supply	10-32 V	10-32 V	10-32 V	10-32 V	11 - 35V	10.5-35 V
Power consumption (typical)	55W	100W (25kW), 90W (12kW), 65W (6kW)	100W (25kW), 90W (12kW), 65W (6kW), 55W (4kW)	18.1-24.4 W (dependent on range setting)	30W	33.5W
Power consumption (standby)	50W	20W	20W	3W	12W	14W
Temperature range	-15 to 55C	-15 to 55C	-15 to 55C	-15 to 55C	-15 to 70C	-15 to 60C
Guard zone with alarm	Yes	Yes	Yes	Yes	Yes	Yes
Cable length	15 m	15 m	15 m	15 m	15 m	15 m
Polarization	Horizontal	Horizontal	Horizontal	Horizontal	Horizontal	Horizontal
Trails	Heading-corrected, Adjustable	Adjustable	Adjustable	Heading-corrected, Adjustable	Adjustable	Adjustable
Dual Range	Yes	Yes	Yes	Yes	Yes	No

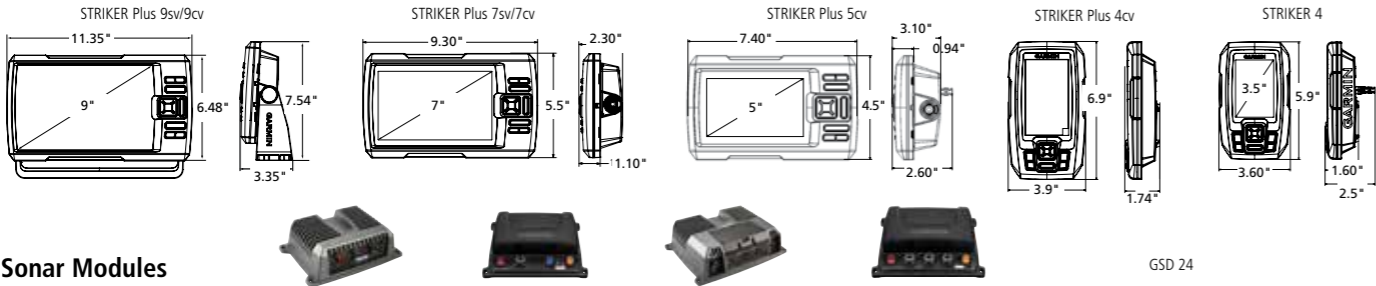


Fishfinders



	STRIKER Plus 9sv	STRIKER Plus 7sv	STRIKER Plus 7cv	STRIKER Plus 5cv	STRIKER Plus 4cv	STRIKER 4
Display size (diagonal)	9.0"	7.0"	7.0"	5.0"	4.3"	3.5"
Display resolution	800 x 480 WVGA	800 x 480 WVGA	800 x 480 WVGA	800 x 480 WVGA	480 x 320 HVGA	480 x 320 HVGA
Internal high-sensitivity GPS	Yes	Yes	Yes	Yes	Yes	Yes
Built in Quickdraw	Yes	Yes	Yes	Yes	Yes	No
Built in WiFi	Yes	Yes	Yes	No	No	No
CHIRP traditional sonar	Yes	Yes	Yes	Yes	Yes	Yes
Dual frequency (50/200 kHz)	Yes	Yes	Yes	Yes	Yes	Yes
Dual beam (77/200 kHz)	Yes	Yes	Yes	Yes	Yes	Yes
CHIRP ClearVü	Yes	Yes	Yes	Yes	Yes	N/A
CHIRP SideVü	Yes	Yes	N/A	N/A	N/A	N/A
Included transducer	CV52HW-TM (High Wide CHIRP/ ClearVü/SideVü)	CV52HW-TM (High Wide CHIRP/ ClearVü/SideVü)	CV20-TM (CHIRP/ClearVü)	CV20-TM (CHIRP/ClearVü)	CV20-TM (CHIRP/ClearVü)	Dual Beam (77/200 kHz)
Transmit power	250 W Trad 350 W ClearVü/SideVü	250 W Trad 350 W ClearVü/SideVü	500W Trad 500W ClearVü	500W Trad 500W ClearVü	300W Trad 300W ClearVü	200 W (RMS) 1,600 W (peak-to-peak)
Frequencies supported (kHz)	High-Wide CHIRP (150-240 kHz) ClearVü/SideVü (455/800 kHz)	High-Wide CHIRP (150-240 kHz) ClearVü/SideVü (455/800 kHz)	CHIRP (77/200 kHz) ClearVü (455/800 kHz)	CHIRP (77/200 kHz) ClearVü (455/800 kHz)	CHIRP 77/200 kHz ClearVü (455/800 kHz)	Traditional: 50/77/200 CHIRP (Low, Mid, High)
Maximum depth capabilities with included transducer¹	800 ft (traditional) 250 ft (ClearVü) 500 ft Left/Right (SideVü)	800 ft (traditional) 250 ft (ClearVü) 500 ft Left/Right (SideVü)	2,300 ft (traditional) 250 ft (ClearVü)	2,300 ft (traditional) 250 ft (ClearVü)	1,750 ft (traditional) 250 ft (ClearVü)	1,600 ft (traditional)
Waypoints	5,000	5,000	5,000	5,000	5,000	5,000
Audible alarms	Yes	Yes	Yes	Yes	Yes	Yes
User Data Sharing Cable compatible	Yes	Yes	Yes	Yes	Yes	Yes
Water temperature log/graph	Yes	Yes	Yes	Yes	Yes	Yes
GPS speed	Yes	Yes	Yes	Yes	Yes	Yes
Flasher	Yes	Yes	Yes	Yes	Yes	Yes

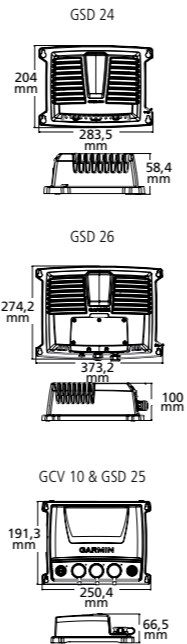
¹ Maximum depth capacity is dependent on water salinity, bottom type and other water conditions.



Sonar Modules

	GSD 24	GSD 25	GSD 26	GCV 10
Physical size (WxHxD)	275 x 82 x 204 mm	192 x 66 x 251 mm	363 x 100 x 274 mm	192 x 66 x 251 mm
White line	Yes	Yes	Yes	No
Waterproof according to standard	IPX7	IPX7	IPX7	IPX7
Ultrascroll	Yes	Yes	Yes	No
Compatible with Dual Frequency transducers	Yes	Yes	Yes	No
Autogain technology	Yes	Yes	Yes	Yes
Power supply	10-35 V	10-35 V	10-35 V	10-35 V
Power consumption	2-29 W	2-29 W	5-94 W	10,5 W
Max. depth¹	5000 ft	ClearVü: 750 ft SideVü: 500 ft Traditional: 5,000 ft	10 000 ft	ClearVü: 750 ft SideVü: 500 ft
Fish symbol ID	Yes	Yes	Yes	No
Frequency	Traditional: 50/200, 77/200, 83/200 kHz	Traditional: 50/200, 77/200, 83/200 kHz Single Channel CHIRP: 40-250 kHz Dual Channel CHIRP: 40-250 kHz SideVü/ClearVü CHIRP: 455/800 kHz CHIRP: 260/455 kHz	Traditional: 50/200, 77/200, 83/200 kHz Single Channel CHIRP: 40-250 kHz Dual Channel CHIRP: 40-250 kHz	SideVü/ClearVü CHIRP: 455/800 kHz CHIRP: 260/455 kHz
Max. transducer angle Dual Frequency	45/10°	45/10°	45/10°	n/a
Depth Controlled Gain	Yes	Yes	Yes	No
See Thru compatible	Yes	Yes	Yes	No
Output power	Up to 2 kW	Up to 1 kW	Up to 3 kW	500 W
Garmin Marine Network compatible	Yes	Yes	Yes	Yes

¹ Maximum depth capacity is dependent on water salinity, bottom type and other water conditions.

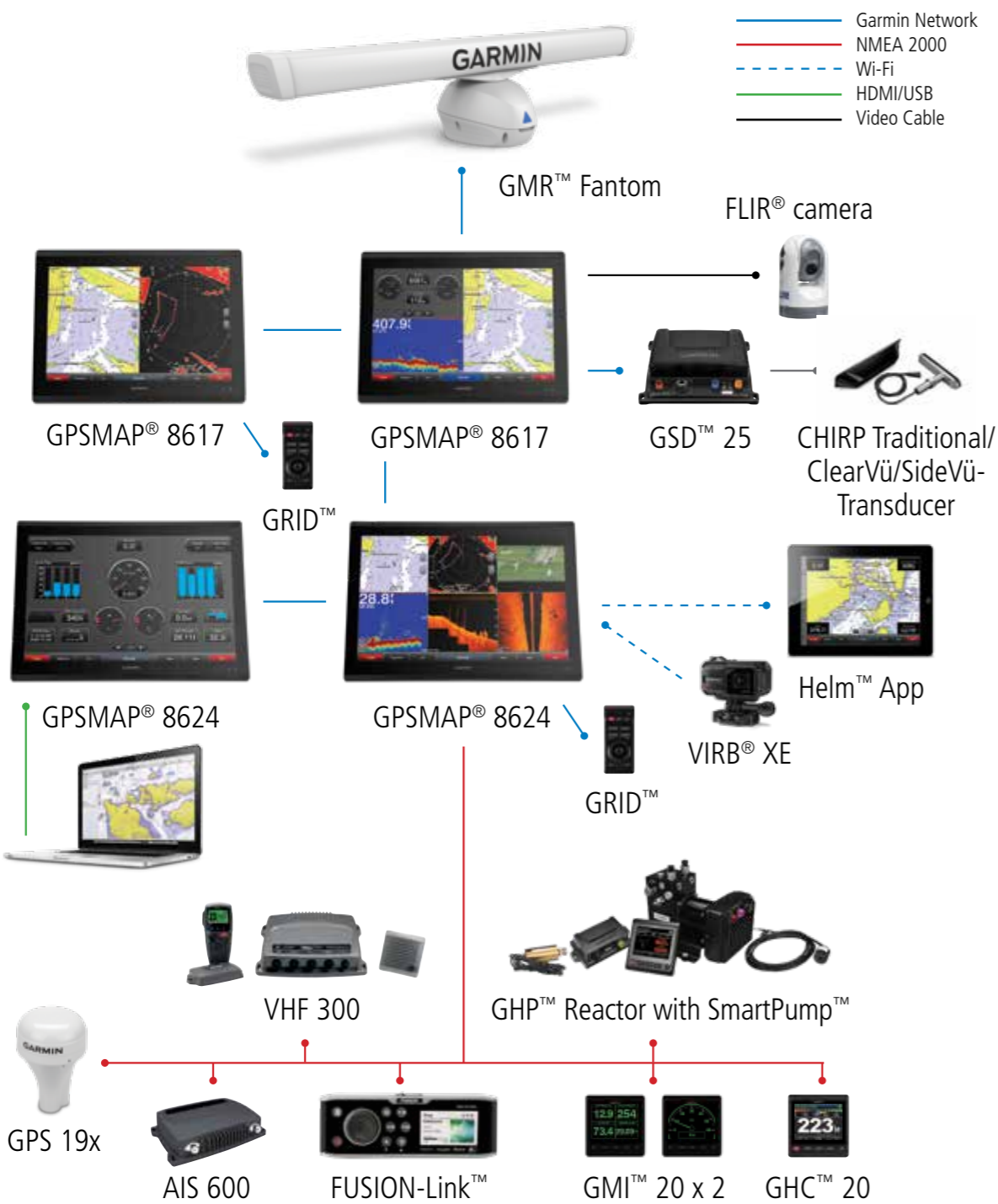


Handhelds & Wearables

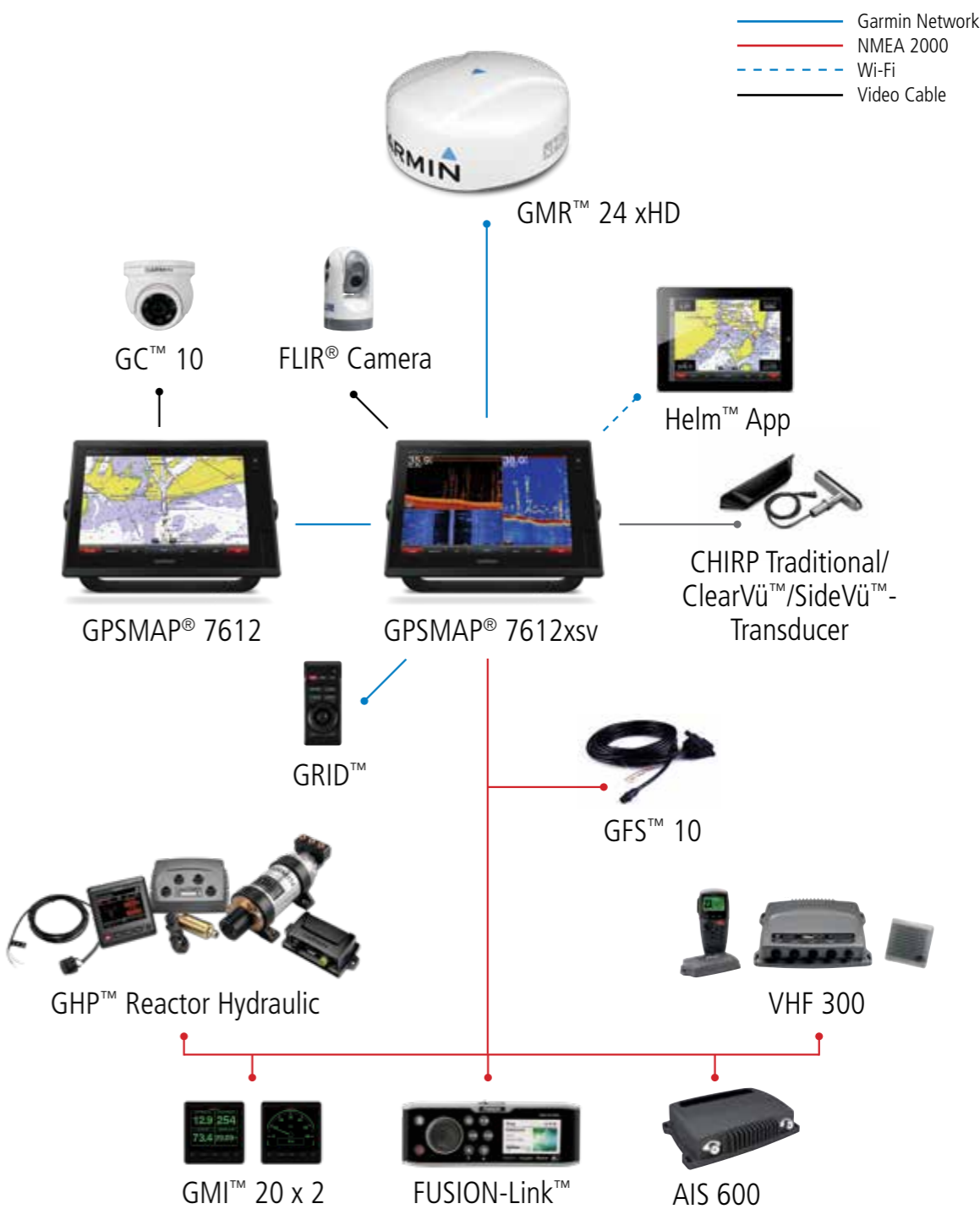


	quatix 5	GPSMAP 276Cx	GPS 73	GPSMAP 78s/78
Receiver	Highly sensitive	Highly sensitive	Highly sensitive	Highly sensitive
Number of waypoints	1,000	10,000	1,000	2,000
Internal map memory	64 MB	8.0 GB	No	1.7 GB
Number of routes	30	250	50	200
Basemap, preprogrammed map	No	Worldwide basemap	No	Worldwide basemap
Additional map options	No	BlueChart g2, City Navigator, topo, topo 24k	No	BlueChart g2, City Navigator, Pro-, Pro v2- and Prime outdoor maps
Battery life	up to 50 hours (UltraTrac mode), up to 20 hours (GPS training mode), up to 6 weeks (watch mode)	up to 16 hours (lithium-ion); up to 8 hours (AA batteries)	18+ hours on 2 AA batteries (not included)	20 hours (2 AA)
Display size	1.2" (30.4 mm) diameter	5" diagonal	2.6" diagonal	2.6" diagonal
Display type	Transflective MIP color	TFT (Transflective)	TFT (Transflective)	TFT (Transflective)
Area calculation	Yes	Yes	Yes	Yes
Display resolution pixels (HxW)	240 x 240	800 x 480	160 x 128	240 x 160
Standard GPS antenna	EXO™ antenna	Internal	Internal	Integral quad helix
Bluetooth®	Yes	Bluetooth / WiFi	No	No
TracBack function	Yes	Yes	Yes	Yes
Number of track points	10,000	20,000	10,000	10,000
Weight	Silicone band: 85 g Metal band: 156 g	450 g (litium), 415 g (AA)	232,4 g	218 g
Alarm	Yes	Yes	Yes	Yes
Waterproof according to standard	10 ATM	IPX7	IPX7	IPX7
Physical size in mm (HxWxD)	47 x 47 x 15,5	19,5 x 94,5 x 44,0	157 x 69 x 30	152 x 66 x 30
Separate Serial & USB interfaces	No	Yes	Yes	Yes
Storage of cartography	No	microSD memory card	No	microSD memory card
Backlit display	Yes	Yes	Yes	Yes
Input for external antenna	No	Yes	No	Yes
WAAS/EGNOS compatible	Yes	Yes	Yes	Yes
Integral electronic compass	Yes	Yes	No	Yes (78s)
Integral barometric altimeter	Yes	Yes	No	Yes (78s)
Automatic route calculation	No	Yes, with City Navigator	No	Yes, with City Navigator
Calendar for hunting/fishing times	No	Yes	Yes	Yes
Solar & lunar calendar	Yes	Yes	Yes	Yes
Area waypoints	Yes	Yes	Yes	Yes
Tidal information	Yes	Yes	No	Yes
Power supply (external)	No	8-36 V	8-36 V	8-36 V
Waypoint icons	No	Yes	Yes	Yes
NMEA compatible	No	Yes (NMEA 0183)	Yes	Yes (NMEA 0183)
Camera	No	No	No	No
Picture viewer	No	No	No	Yes
Floats	No	Yes	Yes	Yes

GPSMAP® 8600 NETWORK EXAMPLE



GPSMAP® 7600 NETWORK EXAMPLE



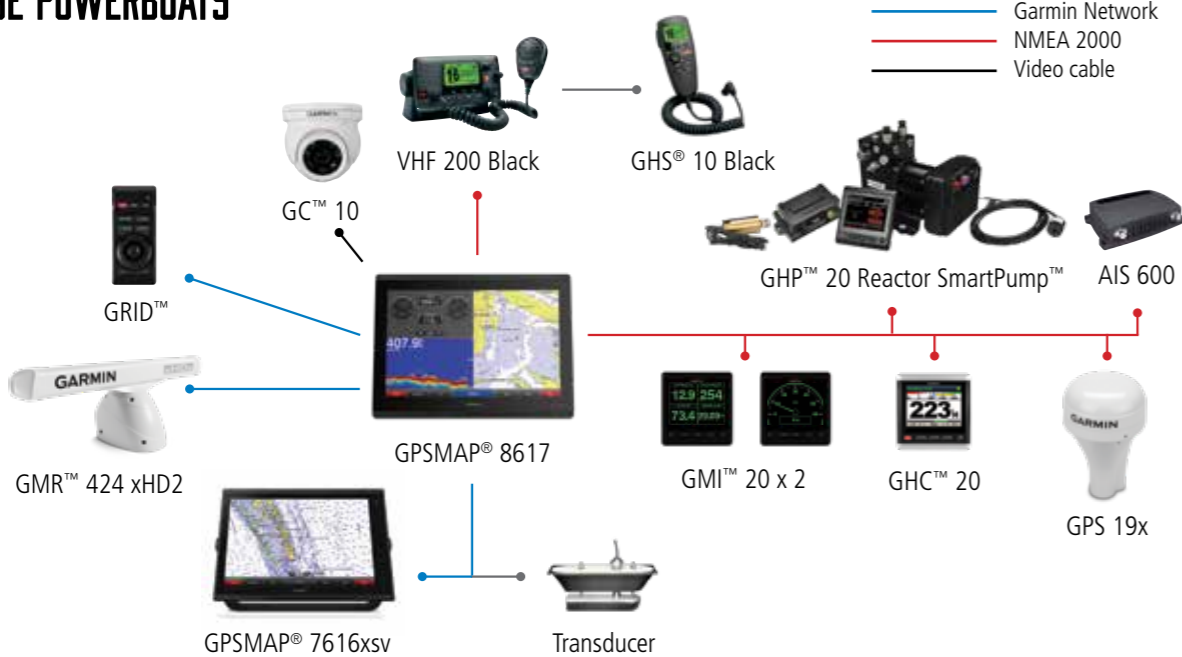
DAY CRUISERS



SAILBOATS



LARGE POWERBOATS



SPORT FISHING BOATS





PRODUCT	PART NUMBER	LIST PRICE
GARMIN NETWORK AND MFD'S		
GPSMAP 8617	010-01510-01	\$7,499.99
GPSMAP 8622	010-01511-01	\$9,999.99
GPSMAP 8624	010-01512-01	\$11,999.99
GRID Garmin Remote Input Device	010-01024-00	\$399.99
Garmin Card Reader	010-01023-00	\$199.99
GPSMAP COMBO'S & STANDALONES		
GPSMAP 742, U.S. LakeVü HD and U.S. BlueChart g2	010-01738-01	\$899.99
GPSMAP 742xs, U.S. LakeVü HD and U.S. BlueChart g2	010-01738-03	\$999.99
GPSMAP 942, U.S. LakeVü HD and U.S. BlueChart g2	010-01739-01	\$1,199.99
GPSMAP 942xs, U.S. LakeVü HD and U.S. BlueChart g2	010-01739-03	\$1,299.99
GPSMAP 1242 Touch, U.S. LakeVü HD and U.S. BlueChart g2	010-01917-11	\$2,599.99
GPSMAP 1242xsv Touch, U.S. LakeVü HD and U.S. BlueChart g2	010-01917-13	\$2,799.99
GPSMAP 1042xsv with transducer, U.S. LakeVü HD and U.S. BlueChart g2	010-01740-11	\$2,099.99
GPSMAP 1242xsv with transducer, U.S. LakeVü HD and U.S. BlueChart g2	010-01741-11	\$2,799.99
GPSMAP 7607 J1939, US LakeVü HD & US BlueChart g2	010-01379-11	\$1,099.99
GPSMAP 7607xsv J1939, US LakeVü HD & US BlueChart g2	010-01379-13	\$1,299.99
GPSMAP 7608 J1939, US LakeVü HD & US BlueChart g2	010-01305-11	\$1,799.99
GPSMAP 7608xsv J1939, US LakeVü HD & US BlueChart g2	010-01305-13	\$1,999.99
GPSMAP 7610 J1939, US LakeVü HD & US BlueChart g2	010-01306-11	\$2,299.99
GPSMAP 7610xsv J1939, US LakeVü HD & US BlueChart g2	010-01306-13	\$2,499.99
GPSMAP 7612 J1939, US LakeVü HD & US BlueChart g2	010-01307-11	\$3,199.99
GPSMAP 7612xsv J1939, US LakeVü HD & US BlueChart g2	010-01307-13	\$3,699.99
GPSMAP 7616 J1939, US LakeVü HD & US BlueChart g2	010-01402-11	\$5,199.99
GPSMAP 7616xsv J1939, US LakeVü HD & US BlueChart g2	010-01402-13	\$5,699.99
ECHOMAP PLUS COMBO'S		
ECHOMAP Plus 43cv, US LakeVü HD & CHIRP Traditional and CHIRP ClearVü transducer	010-01885-01	\$299.99
ECHOMAP Plus 44cv, US BlueChart g2 & CHIRP Traditional and CHIRP ClearVü transducer	010-01886-01	\$349.99
ECHOMAP Plus 63cv, US LakeVü HD & CHIRP Traditional and CHIRP ClearVü transducer	010-01889-01	\$449.99
ECHOMAP Plus 64cv, US BlueChart g2 & CHIRP Traditional and CHIRP ClearVü transducer	010-01890-01	\$549.99
ECHOMAP Plus 64cv, US BlueChart - w/o transducer	010-01890-00	\$449.99
ECHOMAP Plus 73cv, US LakeVü HD & CHIRP Traditional and CHIRP ClearVü transducer	010-01893-01	\$599.99
ECHOMAP Plus 74cv, US BlueChart g2 & CHIRP Traditional and CHIRP ClearVü transducer	010-01894-01	\$699.99
ECHOMAP Plus 73sv, US LakeVü HD & CHIRP traditional, CHIRP ClearVü and CHIRP SideVü transducer	010-01897-01	\$749.99
ECHOMAP Plus 74sv, US BlueChart g2 & CHIRP traditional, CHIRP ClearVü and CHIRP SideVü transducer	010-01898-01	\$899.99
ECHOMAP Plus 74sv, US BlueChart g2 - w/o transducer	010-01898-00	\$749.99
ECHOMAP Plus 93sv, US LakeVü HD & CHIRP traditional, CHIRP ClearVü and CHIRP SideVü transducer	010-01901-01	\$999.99
ECHOMAP Plus 94sv, US BlueChart g2 & CHIRP traditional, CHIRP ClearVü and CHIRP SideVü transducer	010-01902-01	\$1,099.99
ECHOMAP Plus 94sv, US BlueChart g2 - w/o transducer	010-01902-00	\$849.99
STRIKER PLUS		
STRIKER Plus 4, US with dual-beam transducer	010-01780-00	\$139.99
STRIKER Plus 4cv, US with CHIRP Traditional and CHIRP ClearVü transducer	010-01781-00	\$179.99
STRIKER Plus 5cv, US with CHIRP Traditional and CHIRP ClearVü transducer	010-01782-00	\$299.99
STRIKER Plus 7cv, US with CHIRP Traditional and CHIRP ClearVü transducer	010-01783-00	\$399.99
STRIKER Plus 7sv, US with CHIRP Traditional, CHIRP ClearVü and CHIRP SideVü transducer	010-01784-00	\$499.99
STRIKER Plus 9sv, US with CHIRP Traditional, CHIRP ClearVü and CHIRP SideVü transducer	010-01785-00	\$699.99
STRIKER Plus 5cv Ice Bundle, US with CHIRP Traditional and CHIRP ClearVü transducer	010-01782-20	\$399.99
WEATHER SOLUTIONS		
GXM 53 SiriusXM Marine Receiver (requires subscription)	010-01734-00	\$799.99
SONAR COMPONENTS		
GSD 24 Advanced Sonar Module	010-00957-00	\$699.99
GSD 25 Premium Sonar Module	010-01159-00	\$899.99
GSD 26 CHIRP Professional Sonar Module	010-00958-00	\$1,999.99
GCV10 without transducer, SideVü/ClearVü Sonar Black Box	010-01156-10	\$399.99
RADARS		
GMR 18 HD+ Marine Radar	010-01719-00	\$1,299.99
GMR 18 xHD Marine Radar	010-00959-00	\$1,599.99
GMR 24 xHD Marine Radar	010-00960-00	\$2,399.99
GMR 424 xHD2 Kit, 4ft Open Array & 4KW Pedestal	K10-00012-08	\$3,999.99
GMR 624 xHD2 Kit, 4ft Open Array & 6KW Pedestal	K10-00012-09	\$4,799.99
GMR 1224 xHD2 Kit, 4ft Open Array & 12KW Pedestal	K10-00012-11	\$5,799.99
GMR 2524 xHD2 Kit, 4ft Open Array & 25KW Pedestal	K10-00012-15	\$8,199.99
GMR 626 xHD2 Kit, 6ft Open Array & 6KW Pedestal	K10-00012-10	\$5,599.99
GMR 1226 xHD2 Kit, 6ft Open Array & 12KW Pedestal	K10-00012-12	\$6,599.99
GMR 2526 xHD2 Kit, 6ft Open Array & 25KW Pedestal	K10-00012-16	\$8,999.99
GMR Phantom Dome 18	010-01706-00	\$1,999.99
GMR Phantom Dome 24	010-01707-00	\$2,799.99
GMR Phantom 4 Open Array	010-01364-00	\$5,499.99
GMR Phantom 6 Open Array	010-01365-00	\$5,999.99

PRODUCT	PART NUMBER	LIST PRICE
AUTOPILOTS		
GHC 20 Marine autopilot control display	010-01141-00	\$649.99
Compact Reactor 40 - Hydraulic Corepack Starter Kit	010-00705-06	\$1,099.99
Compact Reactor 40 - Hydraulic Autopilot with GHC 20	010-00705-07	\$1,599.99
Compact Reactor 40 - Hydraulic Autopilot with GHC 20 and Shadow Drive	010-00705-08	\$1,999.99
Reactor 40 - Hydraulic Corepack	010-00705-19	\$2,049.99
Reactor 40 - Hydraulic with SmartPump Corepack	010-00705-69	\$4,099.99
Reactor 40 - Mechanical / Retrofit / Solenoid Corepack	010-00705-49	\$2,049.99
Reactor 40 - Steer-by-Wire Standard Corepack	010-00705-86	\$2,599.99
Reactor 40 - Steer-by-Wire Corepack for Yamaha Helm Master	010-00705-87	\$3,249.99
Reactor 40 - Steer-by-Wire Corepack for Viper	010-00705-88	\$6,796.99
Reactor 40 - Steer-by-Wire Corepack for Volvo Penta	010-00705-89	\$6,399.99
TR-1 Gold, Marine Autopilot (does not include cylinder bracket kit or throttle actuator), Installation Hardware, Manual	101-7000-00	\$2,599.99
1.2-Liter Pump Kit, fits Verado, 1-2 outboards under 400hp total	010-11098-00	\$1,099.99
2-Liter Pump Kit, hydraulic steering under 10 cubic inches	010-11097-00	\$1,099.99
2.1-Liter High Performance Pump Kit, for use with large steering systems, greater than 400hp (compact, small design)	010-11099-10	\$1,499.99
Class A Drive Unit (for sailboats with up to 28,500lb of displacement)	010-11572-00	\$2,049.99
Class B Drive Unit (for sailboats with up to 79,000lb of displacement)	010-11573-00	\$3,099.00
Class B Compact Drive Unit (for sailboats with up to 48,400lb of displacement)	010-12029-00	\$1,999.99
COMMUNICATIONS		
GHS 10, U.S., Black	010-11187-10	\$199.99
GHS 11, U.S., Black	010-01759-00	\$199.99
GHS 20, GWH 20 Black Wireless - Remote handset and Hub	010-11189-10	\$399.99
GHS 20 Black Wireless remote handset	010-11189-11	\$299.99
VHF 110, North America	010-01653-00	\$279.99
VHF 210, North America	010-01751-00	\$399.99
VHF 210 AIS, North America	010-01654-00	\$599.99
VHF300, Black	010-00756-10	\$699.99
VHF300 AIS, Black	010-00757-10	\$999.99
VHF300i, Black	010-00756-11	\$849.99
VHF300i AIS, Black	010-00757-11	\$1,149.99
AIS 300	010-00892-00	\$499.99
AIS 600	010-00865-00	\$999.99
QUATIX		
quatix 5, marine watch	010-01688-40	\$549.99
quatix 5 sapphire, marine watch	010-01688-41	\$799.99
GNT 10 NMEA transceiver	010-01134-00	\$149.99
NAUTIX		
Nautix In-View Display	010-01669-00	\$399.99
SAILING		
GND 10 Black box bridge	010-01226-00	\$199.99
gWind	010-01227-00	\$599.99
gWind Wireless	010-01248-00	\$699.99
gWind Race	010-01228-00	\$1,299.99
GMI 20, gWind, GND 10, DST800 Bundle	010-01248-10	\$1,399.99
GMI 20, GNX 20 Bundle, Wired gWind, DST800, GND10	010-01248-30	\$1,499.99
GMI 20, gWind Wireless, GND 10, DST800 Bundle	010-01248-20	\$1,499.99
GMI 20, GNX 20 Bundle, gWind Wireless, DST800, GND10	010-01248-40	\$1,699.99
GNX 20, gWind, GND 10, DST800 Bundle	020-00258-02	\$1,099.99
GNX Wind, GNX 20, gWind Wired, GND 10, DST800 Bundle	010-01248-50	\$1,599.99
INSTRUMENTS		
GMI 20, Marine Instrument Display	010-01140-00	\$549.99
GNX 20 Marine Instrument with Standard 4" LCD	010-01142-00	\$449.99
GNX 21 Marine Instrument with Inverted 4" LCD	010-01142-10	\$449.99
GNX 120 Marine Instrument with 7" LCD	010-01395-00	\$899.99
GNX 130 Marine Instrument with 10" LCD	010-01396-00	\$1,499.99
GNX Wind	010-01142-30	\$499.99
GNX Keypad	010-12255-00	\$179.99
OTHER		
NMEA 2000 Starter Kit	010-11442-00	\$99.00
Marine Wi-Fi Adapter Kit with DC and AC Power Adapters	010-11981-20	\$249.99
GFS 10 Fuel Sensor	010-00671-00	\$199.99
GC 10 Marine Camera, NTSC Standard Image	010-11372-00	\$499.99
GC 10 Marine Camera, NTSC Reverse Image	010-11372-01	\$499.99
GC 10 Marine Camera, PAL Standard Image	010-11372-02	\$499.99
GC 10 Marine Camera, PAL Reverse Image	010-11372-03	\$499.99
GMS 10 Network Port Expander (Network Device)	010-00351-00	\$249.99
GPS 19x HVS	010-01010-00	\$199.99
GPS 19x NMEA 2000	010-01010-10	\$249.99
Glo (Bluetooth GPS)	010-01055-15	\$99.00
VIRB Ultra 30	010-01529-03	\$399.99
VIRB 360	010-01743-00	799.99
SteadyCast Heading Sensor	010-11417-10	\$149.99
9-axis Heading Sensor	010-11417-20	\$649.99

SUPPORT / SERVICE

Time to Use Your Garmin Marine Electronics

To make using and understanding your Garmin electronics as easy as possible, we offer several online resources where you can watch informative videos that show our newest products in action. You can find videos that clearly explain and demonstrate everything from installation and set up to step-by-step “How To Use” guidance that will help you get the most enjoyment and best performance from your Garmin electronics.



facebook.com/Garmin



[twitter.com \(@garmin\)](https://twitter.com/@garmin)



youtube.com/garmin

More Service

Of course, if you don’t find the answers or help you need from our video resources we also provide a quick link to an extensive list of Frequently Asked Questions on a variety of topics that have been brought up by other Garmin Owners.

support.garmin.com

Questions?

If you still haven’t received the answer or explanation you need, then you can always contact one of our knowledgeable representatives by email or phone.



U.S. 913-397-8200 • U.S. Toll-free: 800-800-1020 • Canada: 866-429-9296



[support.garmin.com](mailto:support@garmin.com)



Mon–Thurs: 8am –6pm (CST) • Fri: 8am – 5pm (CST) • Closed Holidays



Garmin International, Inc. - 1200 East 151st Street, Olathe, KS 66062

U.S. 913-397-8200 • U.S. Toll-free: 800-800-1020

GARMIN®

GARMIN.COM