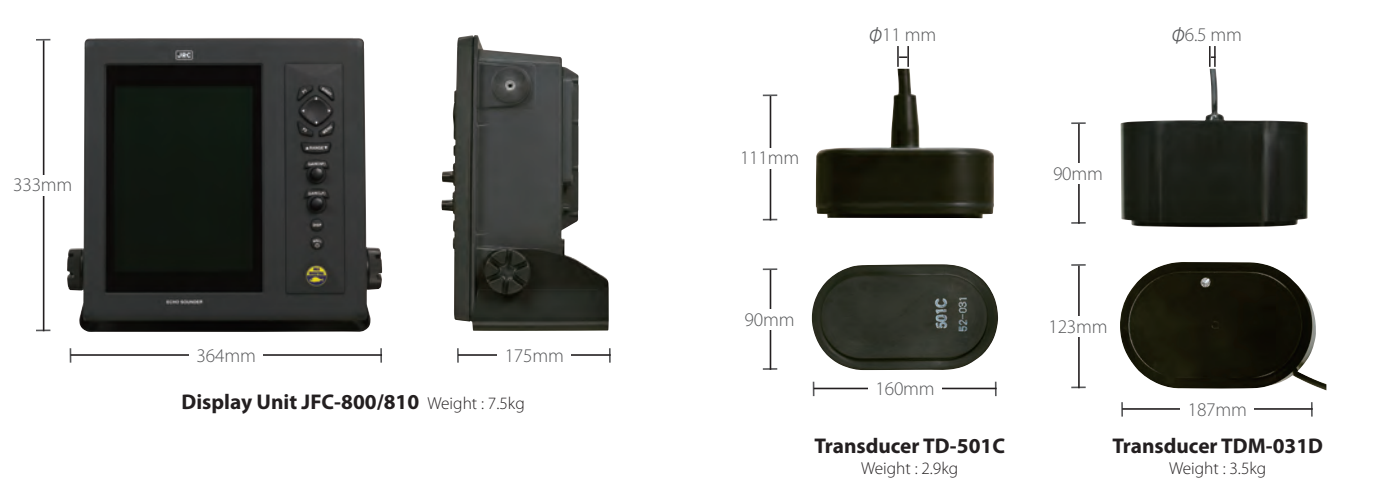


Specifications

Model	JFC-800	JFC-810
Transducer	Standard	High Sensitivity
Output power (RMS)	1kW	
Output frequency	50kHz and 200kHz	
Output method	Single or Alternate	
Display size and type	10.4 inch color TFT LCD	
Display resolution	640 x 480 pixels (VGA)	
Basic range	2.5 to 2000 (m), 10 to 6000 (ft), 2.5 to 1100 (fm / lfm) (8 ranges can be set to users choice)	
Zoom range	2.5 to 200 (m), 10 to 650 (ft), 2.5 to 150 (fm / lfm)	
Range unit	m, ft, fm, lfm	
Shift step	1m, 10m, 1/8, 1/4	
Presentation modes	High frequency, Low frequency, Dual frequency, Zoom image (Bottom lock, Bottom discrimination, Bottom zoom, Zoom, Bottom follow zoom), Nav mode, Vertical split, Horizontal split, A-scope can be displayed at all above modes	
Presentation colors	64 colors, 16 colors, 8 colors, Monochrome	
Back ground colors	Marine blue, Blue, Black, White, Nighttime color, Other 5 colors	
Alarms	Bottom, Fish, Temperature*, Speed**, Arrival***, XTE***	
Image speed	9 steps & stop	
Functions	Interference rejection, Color rejection, VRM, Noise rejection, White line, Draft correct, Water temperature correct, Boat speed correct, Store image (10 images), Sona-Tone, Fishing Hot Spot, Event memory, Simple plotter, Panel illumination, Power reduction, External trigger, Fish information, Detection area display	
Language	Chinese, English, French, Greek, Italian, Japanese, Korean, Spanish, Thai	
Input data format and sentences	NMEA0183 Ver.1.5/2.0/3.0 GGA, GLL, HDT, MTW, MWV, RMC, VHW, VTG, ZDA	
Output data format and sentences	NMEA0183 Ver.2.0 (DBT : Ver.1.5) DBT, DPT, GGA, GLL, HDT, MTW, MWV, RMC, TLL, VHW, VTG, ZDA	
NMEA input / output port(s)	1	
Power supply	10.8 to 31.2VDC	
Power consumption	30W or less (24VDC)	
Ambient conditions	Operating temperature: -15 to +55°C Water protection: IPX5	

Dimensions



• Specifications may be subject to change without notice.

For further information, contact:



Marine Electronics & Satellite Communications
www.mackaymarine.com

Mackay Marine – High Seas
+1 281 479 1515 marinesales@mackaymarine.com

Mackay Communications, Satellite Solutions
+1 919 850 3100 satserv@mackaycomm.com

Mackay Marine Canada
+1 902 469 8480 sales.canada@mackaymarine.com

Mackay Marine Alaska & Pacific Northwest
+1 206 282 8080 ballard@mackaymarine.com



Since 1915

Japan Radio Co., Ltd.

URL <http://www.jrc.co.jp/eng/>

Main Office: NAKANO CENTRAL PARK EAST
10-1, Nakano 4-chome, Nakano-ku, Tokyo
164-8570, Japan
Telephone: +81-3-6832-1816
Facsimile: +81-3-6832-1845

Overseas Branches : Seattle, Amsterdam, Athens, Manila
Liaison Offices : Taipei, Jakarta, Hanoi, New York
Overseas Subsidiaries : Shanghai, Rio de Janeiro

32EM

ISO9001, ISO14001 Certified

© 2016.5

2016.11

CAT.No.Y10-145 (No.491-1-0) D

Echo sounder
JFC-800/810



Simple and high performance dual frequency with all-in-one design

- Advanced digital signal processing
- 10.4-inch sunlight viewable display
- Two models; standard and high sensitivity
- Multi-language; English, Chinese, Korean, Thai, etc.
- Store and recall favorite fishing hotspots
- Combination of zoom ranges
- Auto function; gain, shift and range



Japan Radio Co., Ltd.

All-in-one system

The JFC-800/810 all-in-one echo sounder utilizes a rugged 10.4-inch bonded and sunlight viewable display, offering advanced filtering capabilities using digital signal processing technology to ultimately provide a clear image and allow for deeper sounding at higher frequencies.

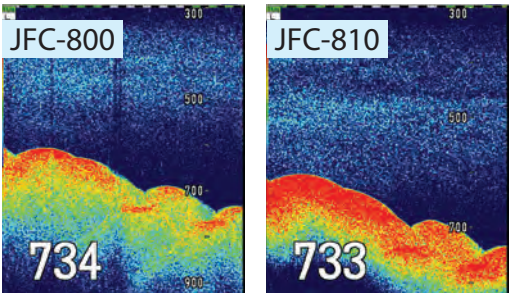




- 10.4-inch sunlight viewable display
- Advanced digital signal processing
- Dual frequency 50/200 kHz
- External monitor output
- NMEA data in/output
- Different sounds for fish or school of fish
- Up to 10 images stored in internal memory
- Displays approximate fish size
- Automatic gain, shift and range
- Stores favorite fishing hotspots

The superior clutter suppression and signal to noise ratio and faster update rates allow for excellent performance in shallow water, while it also detects fish close to the bottom at depths not seen before with these high frequency transducers. The affordable 1 kW echo sounder equals or exceeds the performance of conventional sounders with 3x the power output.

Transducers

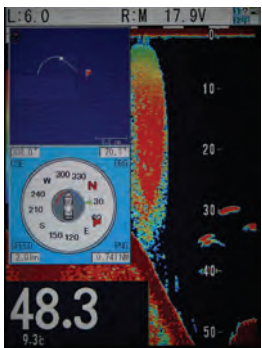
The echo sounder is available in two models. The JFC-800 is the standard model and includes a cost effective transducer. The JFC-810 features a higher sensitivity transducer. The preferred transducer depends on target fish, fishing method, fishing area and usage.



		
Transducer	JFC-800	JFC-810
Frequency	50/200 kHz	50/200 kHz
Output power	1 kW	1 kW
Material	Rubber	Urethane
Cable length	10 m	15 m

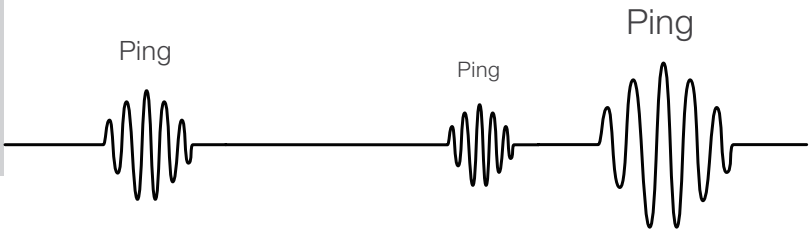
Languages

The JFC-800/810 allows the operator to switch between English, Japanese, Chinese, French, Greek, Italian, Korean, Spanish and Thai.



Fishing hotspot

If you connect an external GPS you can easily mark fishing hotspots. This way you can easily navigate back to your favorite fishing sites or other previously saved positions.



Target sounds

Various functions for improving the catch result are integrated, as are sonar tones that identify what is happening under your vessel immediately with different sounds for fish and school of fish.

Zoom range

Operators can choose to zoom the image at any range in an easy way. After having selected the zoom image, the standard image is indicated on the right side while the zoomed image is indicated on the left part of the display. The echo of the fish is clearly enlarged at a specific depth, aiming for a profitable catch.



Auto function

No need for guessing with this echo sounder anymore. Even a novice operator can achieve professional results by letting the JFC-800/810 pick the most optimum settings for functions such as range, shift and time variable gain (TVG).

In the box

- Display
- Display hood
- Mounting bracket
- Power cable
- Manual (English)

Transducer

Standard or high sensitivity

Accessories

- Water temperature sensor
- Speed sensor
- Inner hull unit
- Various cables/connectors

Tech Specs

Output power	1 kW
Output frequency	50 and 200 kHz
Output method	Single or alternating
Transmit rate	Up to 3000/min
Display (output)	VGA (640 by 480 pixels)
NMEA ports	1 input/output
Power supply	10.8 to 31.2V DC
Power consumption	30W or less