

	NavPro 900	NavPro 1200
A	278 mm (10,9 in.)	391 mm (15,3 in.)
B	154 mm (6,06 in.)	258 mm (10,1 in.)
C	174 mm (6,8 in.)	279 mm (10,9 in.)
D	64 mm (2,5 in.)	120 mm (4,7 in.)
E	32,6 mm (1,2 in.)	30 mm (1,1 in.)

	NavPro 900	NavPro 1200
Display size	9"	12"
Display resolution	800 x 480 px	1024 x 768 px
Display brightness	1100 nits	1250 nits
Touch-screen	Yes, capacitive multitouch	
Backlit keyboard	Yes	
Built-in GPS sensor	10 Hz GPS/GLONASS	
Built-in Fish Finder CHIRP	SWx 900c model	SWx 1200c model
External GPS connector	Yes	
NMEA 2000	Yes	
NMEA 0183	2x Rx/Tx on power cable	
Transducer connector	SWx 900c model	SWx 1200c model
Memory slot	MicroSD	
Wi-Fi connectivity	Yes	
BLE connectivity	Yes	
Mounting options	Bracket, surface and flush mount	
Waterproof	IPX6	
Supply voltage	10-35 Vdc	
Operating temperature	-10°C +60°C	
Storage temperature	-20°C +80°C	



SI-TEX Main Office Address:
25 Enterprise Zone Drive, Ste 2
Riverhead, NY 11901
service@si-tex.com

C-MAP
Compatible with C-Map 4D and Max



NavPro Series

The NavPro Series is the multifunction marine system designed to put every detail at your fingertips.

NAVx Series

9"



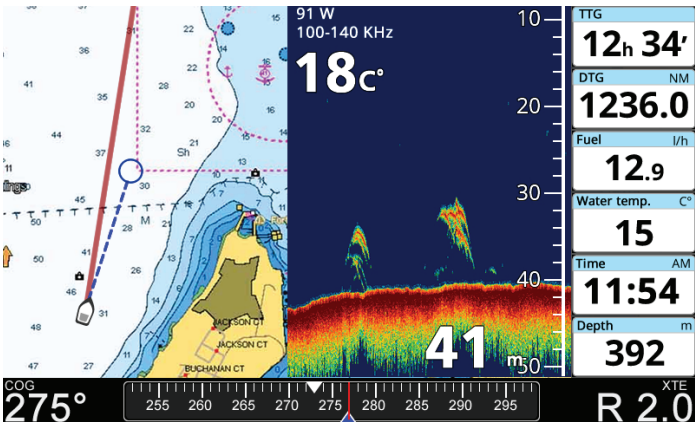
NavPro 900

12"



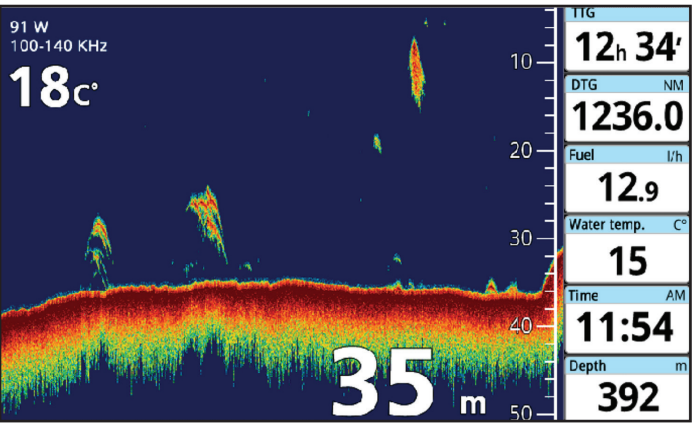
NavPro 1200

NavPro Series is available in two display sizes: 9 and



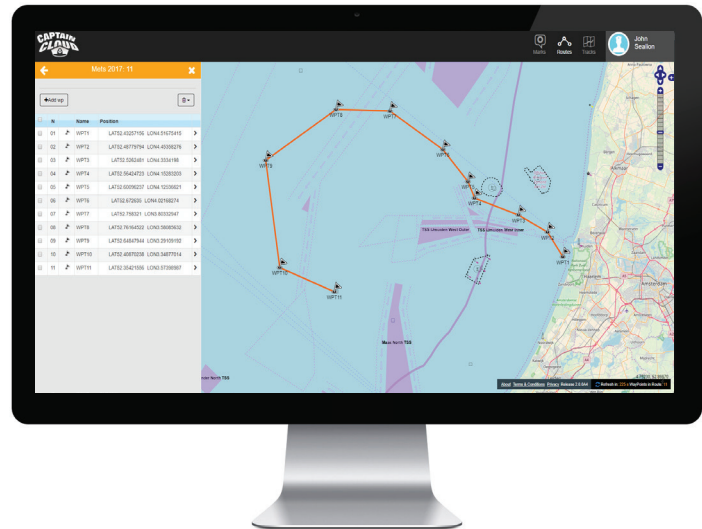
Fully customizable display

Designed to let you choose what to see and what to hide: map, FF, compass bar, data boxes.



FF CHIRP technology

The new FF CHIRP eliminates surface clutter and water column noise, for hi-fi visibility.



Software updates come easy

Keep your chart plotter always up to date, thanks to the Wi-Fi connectivity.

Join the CaptainCloud

Synchronize your data with CaptainCloud and manage routes, tracks and marks from any connected device. Build your favorite routes easily at home, and find them ready on your chartplotter!

Hybrid interface

NavPro series maximizes the benefits of the touch screen with the reliability of an ergonomic keyboard. The rotary knob gives you a fast and precise control in every condition, while the touch screen allows the best experience in map exploration and route building.



NMEA 0183 & 2000

The NMEA interface can transform your chart plotter in a multifunctional display to control your ais, autopilot, engine etc.

3 x User customizable keys

Programming F keys give you instant access to your favorite functions.

Ultra bright display

The NavPro series displays ensure clarity and contrast in all light conditions.

Take Control



Remote control app

You don't need to buy a remote control any more: thanks to the RC App, connect your phone via BLE and enjoy the simplest way to interact with your chart plotter. BLE ensures a low battery consumption.



Mirror control app

What about duplicating your plotter on your tablet? It's easy: establishing a wi-fi connection, you can use your tablet as a touchscreen chart plotter!

What you see, is what you get

The mirror image is fully functional. Thanks to the MC App, you can build your next route or manage your marks while sitting on the sun deck of your boat.

External devices not included