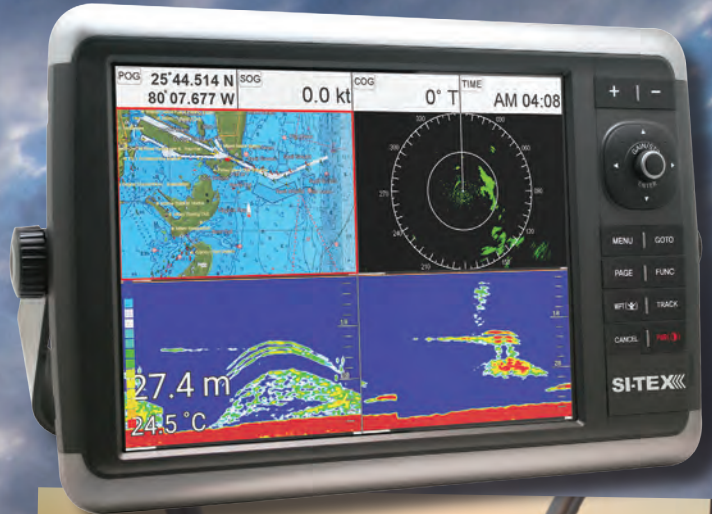


SITEX[®]

MARINE ELECTRONICS



THE MOST TRUSTED NAME IN MARINE ELECTRONICS

MULTI-FUNCTION/SONAR/GPS

These new-for-2015 multi-function charting systems bring great features and powerful performance to every boat. From coastal and offshore fishing rigs to power cruisers to ocean-going sailboats, these advanced systems provide the all the advanced navigation and sonar features you'll need. With 10.1" and 8" inch displays and streamlined, rugged cases that can be bracket or flush mounted, these affordable machines are a great match for a wide range of boats — and boaters.



NEW!
SVS-1010C/F & SVS-880C/F Series | Chartplotter/Sonar



These powerful navigation/sonar systems feature 10.1" WVGA or 8" SVGA direct sunlight viewable color LCD displays for big, clear pictures. Both are available as chartplotter (C) or chartplotter/sonar combination (C/F) providing professional-grade fishfinding.

- Use either Navionics Gold or C-MAP MAX cartography
- Come pre-loaded with Navionics Gold North American Chart Card
- 52 channel built-in antenna (external antenna optional)
- Global GPS (U.S., European Galileo, Russian Glonass and Asian QZSS)
- Powerful 600W 50/200kHz sonar with available down-imaging for versatile fishfinding performance.

Overall Dimensions (w/o bracket): SVS-1010C/F 12.75"(W) X 7.63"(H) X 4.25", SVS-880C/F 10.50"(W) X 4.38"(H) X 4.25"(D)

Scan QR Codes or visit our website to see full specifications on all products.



NEW!
HDR-1000R | Wireless Remote
 RF remote provides complete, effortless control of SVS-880 and SVS-1010, even when not pointed at the unit.

- Compact, water-resistant design
- Includes dash mounting clip and wrist lanyard
- Three programmable function keys
- Control keys for Quick Nav, Zoom In/Out, Quick WPT input, Multi-Directional Cursor Control, & more.



SVS-880C | 8" Chartplotter Only



SVS-1010C | 10" Chartplotter Only



NEW!
SVS-760F/CF | Digital Sonar With Charting, 7.5" Color Sunlight Viewable LCD



This all digital technology sounder combines professional fishfinding performance with built-in charting using an optional 50-channel GPS receiver.

- 600W output/dual frequency operation
- Vertical 480X800 pixel display delivers useful data
- High-speed CPU presents all fish targets
- Depth ranges to 4,800'
- IPX7 Waterproof rating
- Features include Bottom Discrimination, Bottom Lock, Bottom Zoom, A-scope
- Depth, Fish School and Water Temperature Alarms
- SVS-750CF C-MAP MAX compatible for detailed charting
- Easy AIS integration for safety and fishing.

Overall Dimensions (w/o bracket): 7.38"(W) X 8.00"(H) X 4.75"(D)



SVS-560C/F | Compact Chartplotter/Sonar



This new charting/sonar system packs big performance in a small package, ideal for boats with limited space. With a 5" high-resolution color LCD display, dual-fuel charting and dual-frequency sonar, this unit is ready for adventure.

- Available as chart only or chart/sonar combination
- Uses either Navionics Gold or C-MAP MAX cartography
- Comes pre-loaded with Navionics Gold North American Chart Card
- 52 channel built-in antenna (external antenna optional)
- Global GPS (U.S., European Galileo, Russian Glonass and Asian QZSS)
- Powerful 600W 50/200kHz sonar.

Overall Dimensions (w/o bracket): 7.50"(W) X 4.38"(H) X 3.75"(D)

MULTI-FUNCTION/SONAR/GPS



CVS-126 | Compact Color Sonar, 5.7" Color Sunlight Viewable LCD



Now skiffs, center consoles and other small boats can have the same digital fishfinding technology trusted by the pros. • 600W output/dual frequency operation • Brilliant 240X320 pixel display • Depth ranges to 3,600' • IPX5 Waterproof rating • Auto Fishing/Cruising mode. **Overall Dimensions (w/o bracket): 7.18"(W) X 8.19"(H) X 5.51"(D)**



CVS-128 | High-Performance Digital Sonar, 8.4" Color Daylight Viewable LCD



SI-TEX packs many professional features into this compact, 8.4" display unit, for big-time performance on any boat. • Superior digital filtering for professional performance • 1kW or 600W output/dual frequency operation • Depth ranges from 10' to 3,600' • Sleek IPX5 waterproof case • Features include Auto Fishing/Cruising mode, A-scope, audio/visual alarms. **Overall Dimensions (w/o bracket): 7.18"(W) X 8.19"(H) X 5.51"(D)**



CVS-1410 | Commercial-Grade Sonar, 10.4" Color TFT Sunlight Viewable Display



This dual frequency (50/200kHz), 1kW sonar has the power and advanced fish-finding features for commercial boats and serious blue water battlewagons. • Digital filtering for superior clutter suppression and signal-to-noise ratio • Faster update rates for better performance in shallow water • Eight customizable ranges from 10' – 6,000' • Pulse transmission rate of 5,000 times per minute • Display modes include bottom lock, bottom zoom, auto zoom, A-scope, Nav Info. **Overall Dimensions (w/o bracket): 5.35"(W) X 8.85"(H) X 3.62"(D)**



NEW! Explorer NavPro | Black-Box Multifunction Navigator



Turns any onboard VGA display or off-the-shelf PC monitor into an advanced electronic charting navigation system. Features include HDMI video output and NMEA2000 networking for advanced engine monitoring and AIS integration capabilities. New fast and powerful processor provides quick, seamless operation when panning and zooming the data-rich vector chart display • Uses C-MAP MAX cartography on mini SD card • Improved user interface and file management system • Large 4GB Mark, Track and Route memories • Two NMEA0183 data ports • GPS smart antenna port.



Trawl Plot 12 SD | Commercial Chartplotter, 12.1" SVGA Color Display



This robust plotter was designed for the demanding needs of commercial fishermen and professional mariners. • Simple operation with dedicated buttons • One-Touch event mark for easy storage/retrieval of gear marks • Stores up to 5,000 waypoints/marks • Stores up to 50 routes/50,000 track points in 5 memories • Unlimited storage of track/route data on SD memory cards • Uses C-MAP MAX cartography. **Overall Dimensions (w/o bracket): 15.5"(W) X 13"(H) X 10(D)"**



SST-110 | Digital Sea Temperature Indicator, Large 4-Digit LCD Display



This digital sea temperature gauge is accurate, simple to use and fully compatible with Dytek temperature components found on many boats. Great for commercial and sport fishing. • Accurate readings to 0.01-degree Fahrenheit/Celsius • Measures just 4.3"X4.3"X3.5" • Temperature trend arrow • Five levels of backlighting.

GPS NAVIGATION/AIS



NEW!
GPK-11 Max |
Smart DGPS Sensor
Accurate GPS Data
Output



Accurate position data for navigation systems. • Smart 72-channel DGPS antenna • Uses up to three different GPS networks concurrently for maximum position accuracy • High sensitivity with minimal acquisition time • Low power consumption • Low profile, pole or flush mountable • IP67 waterproof rating • Delivers better than 3 meter accuracy • Outputs NMEA0183, GGA, RMC, GSA, GSV, TXT • Works with any SI-TEX plotter or other unit requiring NMEA0183 GPS input.



GPS-90MKII |
Differential GPS/Track
Plotter, Professional
DGPS Navigation



Digital DGPS units like the GPS-90MKII are the choice of many professional mariners and commercial fishermen. • Repeatable accuracy to 10 feet • Graphic navigation pages/track plotter • Large digital display of position data • 400 nameable waypoints and event memory storage • Automatic lat/lon to Loran LOP conversion • Weatherproof construction. **Overall Dimensions (w/o bracket): 8.68”(W) X 5.43”(H) X 3.56”(D)**



Metadata AIS |
Black Box Modules,
Plug-and-Play AIS
Integration



Provides advanced AIS features with plug-and-play performance for chartplotters, radars, onboard PCs and other electronics. • Rmax™ technology means all AIS messages are received and decoded in real time • Transceiver features internal 50-channel GPS • Transceiver/receiver feature NMEA0183, NMEA2000 and USB connectivity • Antenna splitter allows full VHF communications and AIS send/receive with single antenna • Maintains existing VHF reception and range • Clear Call Routing ensures VHF emergency call priority • Each module is IPx7 Waterproof, measures just 5.5”X3.9”X1.9”.



SVS-460C | Compact
Chartplotter



Precision GPS navigation and dual-fuel charting in a size that fits any boat. With a 4.3” high-resolution color LCD display, built-in antenna and simple operation, the SVS-460C is a great choice for all types of boaters. • Uses either Navionics Gold or C-MAP MAX cartography • Comes pre-loaded with Navionics Gold North American Chart Card • 52 channel built-in antenna (external antenna optional) • Global GPS (U.S., European Galileo, Russian Glonass and Asian QZSS) • Great value for the price. **Overall Dimensions (w/o bracket): 7.50”(W) X 4.38”(H) X 3.75”(D)**



NEW!
MDA-4 |
VHF/DSC/AIS



This new addition to the Metadata family provides DSC communications with built-in AIS. • Large LCD with full dot-matrix display • NMEA2000/NMEA0183 compatible • 25W hailer/foghorn • Rotary menu control • Second station mic kit available.



SAS-300 | Class B
AIS Transceiver, High
Resolution 6.5”
Color LCD With
Charting Capabilities



This standalone AIS delivers advanced “Send and Receive” performance for recreational and professional mariners. • Full control pad with dedicated keys • Class B transceiver with Rmax™ technology for superior signal processing • “Radar” display overlay on base charts or optional C-MAP MAX on SD • Displays data from Class A/Class B vessels, Base Stations and AIS SARTs • Track 5 vessels with history and optional live details • Selectable vessel icons/colors for easy traffic monitoring • Alarms for Closest Point of Approach/Time To Closest Point of Approach. **Overall Dimensions (w/o bracket): 7.38”(W) X 8.00”(H) X 4.75”(D)**

MULTI-FUNCTION/RADAR/GPS/SONAR



NavStar 10



NavStar 12



NEW! NavStar 10 and NavStar 12 | Hybrid Touch Screen MFD



Introducing the most advanced Multifunction Display (MFD) navigation systems ever from SI-TEX. These two new NavStar Series MFDs combine advanced radar, sonar, GPS/chartplotter and entertainment functionality with the ease and versatility of hybrid touch-screen operation. Available with 10- and 12-inch displays and made to SI-TEX's rugged, professional-grade standards, these systems will perform reliably on a wide variety of vessels. The long list of standard features includes:

- Powerful 4kW dual-range radar capability to view close in and far away targets simultaneously
- Advanced digital 1kW or 600W dual-frequency sonar for superior detection of bottom composition, structure and fish schools
- High-brightness, high-resolution TFT XGA LCD display for clear viewing on closed or open boats
- Operates with touch screen or traditional controls
- Built-in high-speed GPS
- NMEA2000 or NMEA0183 interface
- Powerful Cortex A9 1.6GHz Quad Core processor
- Four-way split screen display
- Video and music entertainment
- Built-in Bluetooth and WiFi connectivity
- Wireless LAN for Internet and automatic updating
- Optimized for optional Skymate satellite communications and vessel tracking systems, for up-to-date weather forecasts, Nexrad radar, and Sea Surface Temperatures
- Transmit texts, emails and fax via Skymate
- Easy flush or bracket mounting on any bridge, helm or console.

Overall Dimensions for NavStar 10 and 12 (w/o bracket): 14.25"(W) X 9.60"(H) X 2.65"(D).

RADAR



T-2000 Series | Professional Dual Range Radar, 10.4" Color TFT LCD Display



With advanced radar features, up to 12kW power and a large display, this professional dual-range radar is ideal for commercial and larger recreational vessels.

- T-2041 4kW 25" Radome 36 mile
- T-2040-3 4kW 3.5' Open Array 48 mile
- T-2040-4 4kW 4.5' Open Array 48 mile
- T-2060-4 6kW 4.5' Open Array 72 mile
- T-2060-6 6kW 6' Open Array 72 mile
- T-2010-4 12kW 4.5' Open Array 72 mile
- T-2010-6 12kW 6' Open Array 72 mile
- Dual-Speed antenna with 48-rpm capability for high speed/river operations • Split-screen display of long- and short-range targets simultaneously • True-Trail Function identifies moving targets • Features include Interference Rejection, Target Expansion, Parallel Index, True/Relative Bearing • Standard AIS Interface module capable of tracking 200 targets***** • Optional 50-target Automatic Tracking Aid (ATA)***. **Overall Dimensions (w/o bracket): 12.62"(W) X 12.62"H X 5.43"(D)**



T-900 Series | Digital Dual Range Radar, 8.4" True Color Daylight Viewable LCD



Features like SI-TEX's exclusive Hyper-Digital Processing (HDP) and Dual-Range Display provide boaters with detailed information on land features, vessels, squalls and more, for safer navigation in challenging conditions.

- T-921 2kW 18" Radome 24 mile
- T-941 4kW 25" Radome 36 mile
- T-940-3 4kW 3' Open Array 48 mile
- T-940-4 4kW 4' Open Array 48 mile
- Dual-speed antennas with 48-rpm capability for high speed/river operations**** • Split-screen display of long- and short-range targets simultaneously • True-color display of targets based on strength • Clearly ID moving targets with True Trail function • Features include Warning Zone, Head Up/North Up/Course Up/True Motion Display • Standard AIS Interface module capable of tracking 100 targets***** • Optional Automatic Tracking Aid (ATA) and AIS interface***. **Overall Dimensions (w/o bracket): 9.45"(W) X 10.35(H) X 5.21"(D)**



T-760 Series | Touchscreen Radar, 7" Color Daylight Viewable LCD



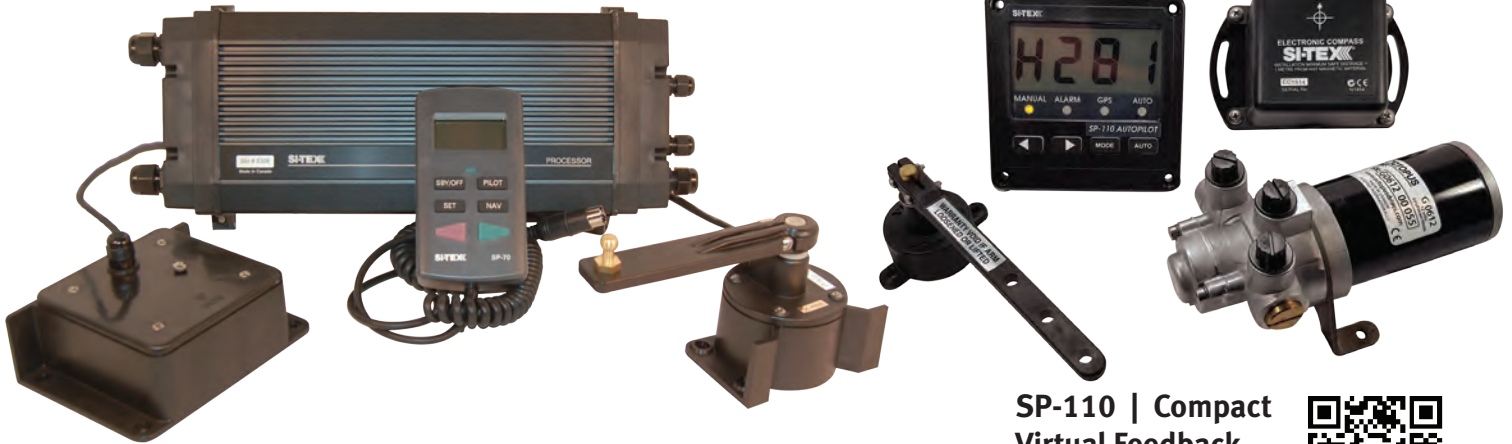
Big time features, plenty of power and innovative touchscreen control in a compact, affordable radar system that's right at home on any boat. Packed with many advanced functions and features found on SI-TEX's professional marine radars.

- T-760 4kW 18" Radome 24 mile
- T-761 4kW 24" Radome 48 mile
- Powerful 4kW transmitters for accurate target detection in all conditions • Multi-speed 16/27/36/48 rpm antenna rotation • Standard 50-target AIS tracking capability**** • Standard 10-target MARPA capability*** • 11 Trail Indication settings • Auto or Manual Sea/Rain Clutter modes • Relative Motion/True Motion/North-Up/Head-Up and Course-Up presentation modes • Simple operation via touchscreen and single rotary dial • Slim, stylish case with vertical display, **Overall Dimensions (w/o bracket): 5.35"(W) X 8.85"(H) X 3.62"(D)**
- ****Requires interface to AIS device.
- ***Requires bearing data, speed data and lat/lon data input.



SI-TEX Radars are offered with a range of powerful radome and open array antennas for optimum performance

AUTOPILOTS



SP-70/80 | High Performance Autopilot, Versatile and Robust Steering Performance



The robust SP-70/80 is a proven performer on boats around the world, providing accurate, reliable steering under the most challenging conditions. Rough sea states, wicked crosswinds and driving currents, the SP-70/80 is built to take them all in stride and keep your vessel on course. That's

why it continues to be a leading choice of recreational craft and hard-working commercial fishing boats alike. Made with professional grade components and features, the versatile SP-70/80 is capable of operating with most standard vessel steering systems. In the SI-TEX tradition, the SP-70/80 is built to perform and built to last. • Extremely robust components • Fixed or handheld operation • Rugged waterproof control head • 10 selectable steering parameters • Optional, full function second station.

SP-110 | Compact Virtual Feedback Autopilot, Powerful Features in a Small Package



With a compact, splash-proof control head and simple operation, this is a great autopilot for small to medium-sized boats. • Virtual Rudder Feedback for reduced cost, greater reliability • Control head measures just 4.3" square • Transflective LCD display • Compatible with hydraulic or mechanical steering • Simple GPS Mode for easy waypoint steering.

SP-36 Mark II | Color Display Autopilot, Feature Packed, Intelligent Steering



With its Intelligent Steering Technology (IST), this autopilot is the smart choice for powerboats and commercial vessels up to 100' in length. Offers Quick Turn selections for Continuous Circle, U-Turn and Emergency MOB to steer the Williamson Recovery turn. Its Fish Zag feature gives offshore trollers an edge in catching bluewater gamefish. Advanced sailing modes including Apparent Wind Steering and Wind Points Steering. • Virtual Rudder Feedback for reduced cost, greater reliability • IST "learns" vessel characteristics for improved performance • Bold color LCD display • Multiple pre-set turn patterns • Advanced No Drift Mode.



HEADING SENSORS



NEW! Vector Compact | GPS Compass



The smallest GPS compass available, the Vector Compact provides accurate, stable heading and position data to critical onboard systems including chartplotter/MFDs, radar, sonar, AIS, autopilots, PC navigation and more • Measures just 10 inches long and weighs less than one pound • Two GPS receivers/antennas with single clock for precision • Built-in gyro and tilt sensors provide heave, roll and pitch information for improved accuracy in heavy seas • Updates heading/position data 10 times per second • Tracks turns at 90-degrees per second • Heading output data superior to fluxgate and rate sensor compasses (2-degrees RMS) • Provides accurate headings even when vessel is stationary • Provides precise, stable SOG and COG readings to navigation systems • Supports global satellite augmentation systems: WAAS (U.S.), EGNOS (Europe), MSAS (Japan) and GAGAN (India) • Available in NMEA 2000 and NMEA0183 versions.

HDK-11 | Solid State 3-Axis Gyro Compass



This recreational heading sensor uses a three-axis rate gyro compass for superior accuracy. • Better than 1-degree heading accuracy in static conditions • Best-in-class 2-degree accuracy in rough seas • Three-axis accelerometer/gyro for pitch & roll and Rate of Turn data • Easy compass calibration on display or PC • IPX6 Waterproof rating • Mounts easily on any angled bulkhead • Outputs NMEA0183/NMEA2000 simultaneously.



Mount not
included

Vector Pro G1 | 3D GPS Satellite Compass



This compact, maintenance-free GPS satellite compass provides three-dimensional positioning data to NMEA0183 and NMEA2000 compatible electronics. • Measures only 16.4" in length, no moving parts • Better than 0.60-degree heading accuracy/90-degree Rate of Turn tracking • Provides heave, pitch and roll data for 3D (lat/lon/alt) positioning • Built-in SDGPS (Satellite Differential GPS) • Sub 1-meter position accuracy using WAAS, EGNOS and MSAS differential • Maintains corrected position for 40+ minutes following differential signal loss • Heading update rates at 10Hz (20Hz optional)/multiple BAUD rate selections • Initial start up <60 seconds/heading fixes <10 seconds.



Mount not
included

Vector Pro G2 | IMO Compliant 3D GPS Satellite Compass



This IMO compliant GPS Satellite compass provides precise heading and position data for professional and high-end applications. • Accurate and stable, with quick start-up • Better than 0.30-degree heading accuracy • Rate of turn tracking rates up to 90-degrees/second • Provides heave, pitch and roll data for 3D (lat/lon/alt) positioning • Position accuracy <0.6 meter using WAAS, EGNOS and MSAS differential • Heading update rates up to 20Hz/multiple baud rate selections • Outputs data in NMEA0183 and NMEA2000 • Initial start up <60 seconds/heading fixes <10 seconds • Commercial grade IP69 waterproof.



HDK-11



HDK-1000

NEW! HDK-1000 | Compass/GPS



Provides professional-grade position, heading, speed and other critical data to onboard systems. • Uses 12 precision sensors (magnetometers, gyros, accelerometers, GNSS, barometer, thermometer) • Outputs true heading, magnetic heading, deviation, variation, roll, pitch, position, satellite information, ground speed, course over ground, time/date, air pressure and temperature in real time • Install on metal or fiberglass vessels • NMEA0183/NMEA2000 compatible • Includes pole and under-deck mounting kit.



25 Enterprise Zone Drive #2
Riverhead, NY 11901
Phone: (631) 996-2690 • Fax: (631) 996-2693
www.si-tex.com
Email: customerservice@si-tex.com



All SI-TEX products are backed by a Two-Year Limited Warranty. See warranty for complete details.

TRUSTED BY MARINERS FOR 40 YEARS