

# Chart plotter/ Fish finder

FF-901

**JRC** Europe



- Integrates GPS data with digital charts and display of additional sensors
- Multifunctional approach and configurable layout
- CHIRP sonar technology
- Synchronize your data with cloud connectivity



## Category



Deepsea



Workboats

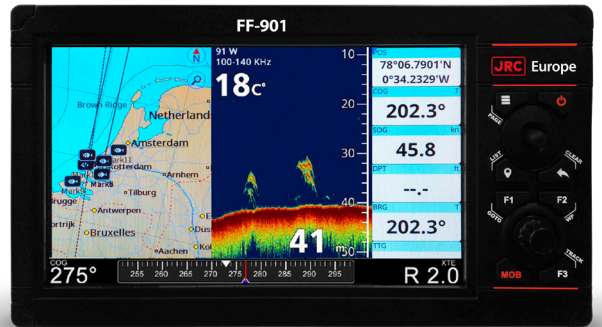


Fishing

[jrc-europe.com](http://jrc-europe.com)

# Features

A multifunctional marine system designed to put every detail at your fingertips. Complete with 9-inch touch display the FF-901 offers an easy to operate, complete solution for navigating and fishfinding. The plotter integrates GPS data with digital charts stored on a micro SD card and can display additional information from AIS, Fish Finder, radar, engine and other sensors.

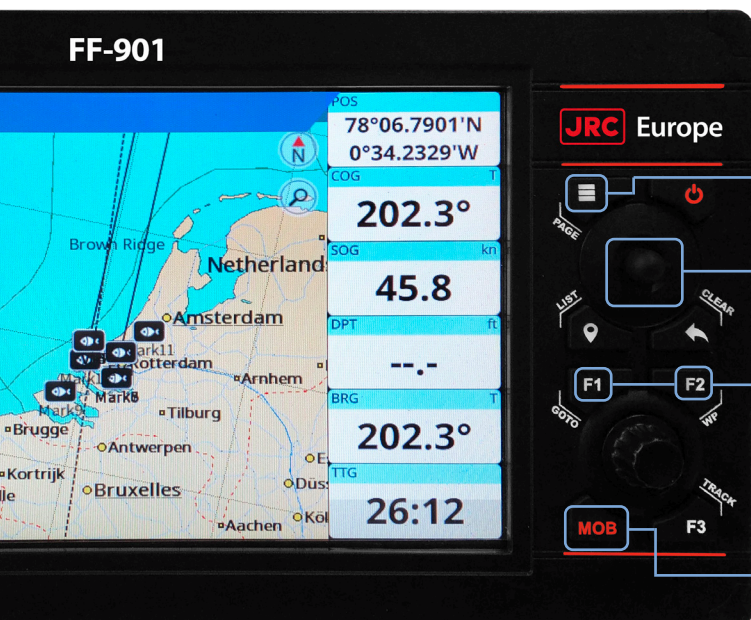
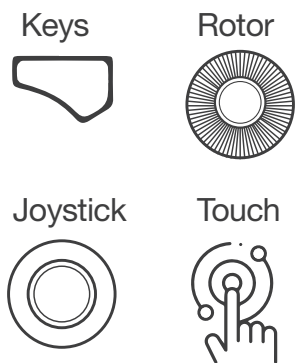


- Easy and ergonomic operation
- 9-inch fully customizable color touch display
- Compatible with a variety of Airmar and Radarsonic transducers
- Ultra bright display for contrast in all light conditions
- WiFi connectivity
- Access data everywhere via cloud service
- User customizable keys
- Waterproof IPX6 rating

# Hybrid interface

The system can be operated in multiple ways. The FF-901 maximizes the benefits of the touch screen with the reliability of an ergonomic keyboard. The rotary knob gives you a fast and precise control in every condition, while the touch screen allows the best experience in map exploration and route building.

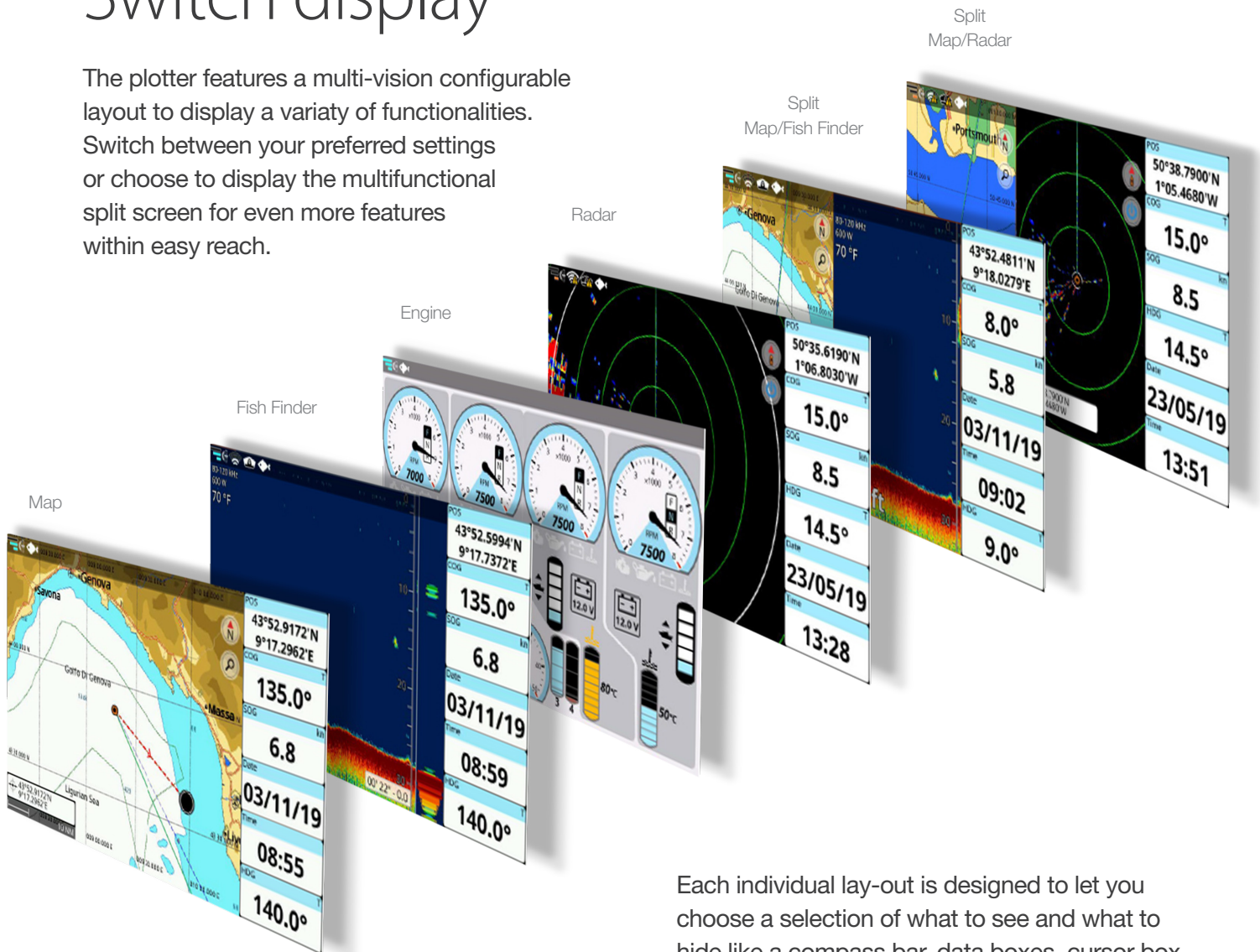
The system offers user customizable keys. Programming F keys give you instant access to three of your favorite functions.



- Menu
- Joystick  
Move the cursor around the map/menu
- Customizable function keys  
Instant access to favorite functions
- MOB  
Man-over-board places a mark on the current boat position and starts navigation to that place

# Switch display

The plotter features a multi-vision configurable layout to display a variety of functionalities. Switch between your preferred settings or choose to display the multifunctional split screen for even more features within easy reach.



Each individual lay-out is designed to let you choose a selection of what to see and what to hide like a compass bar, data boxes, cursor box, switch icon and wheel mode switch icon.

## Software features

- Multi-vision configurable layout
- Full menu on Map
- Navigation functions: Go To, Add Waypoints, Marks, MOB, Easy routing
- Route management
- Tracks recording and management
- Customizable data boxes
- Cursor Box showing distance and bearing
- Customizable ship profile
- Simulation mode
- Grounding alarm
- AIS compatible
- Engine control page (when connected to an engine)

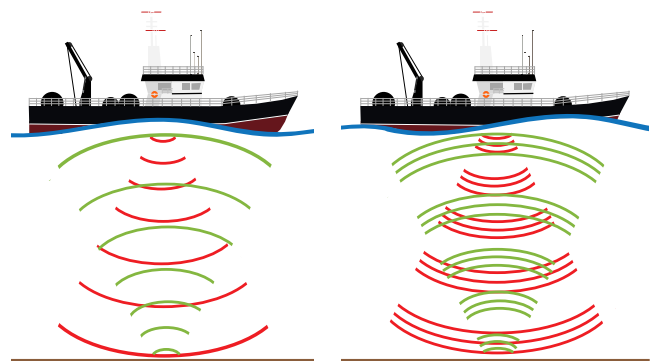
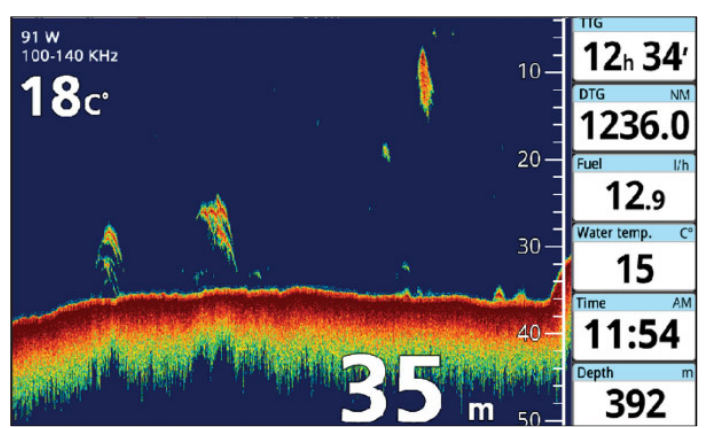


# Fish Finder CHIRP technology

Unlike transitional 2D sonars that specialize in using a single frequency, the CHIRP sonar comes out smarter and better. This new technology eliminates surface clutter and water column noise, for Hi-Fi visibility.

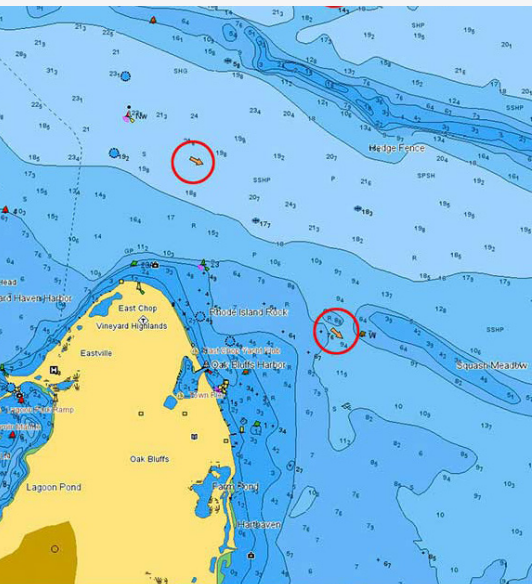
- Greater clarity
- Incredible target separation
- Unmatched precision

It uses an extensive range or bursts of different frequencies to let the transducer vibrate at a low frequency, and later on, modulates in higher pulses that are ten times the duration of the pulse.



Conventional sonar technology

CHIRP sonar technology



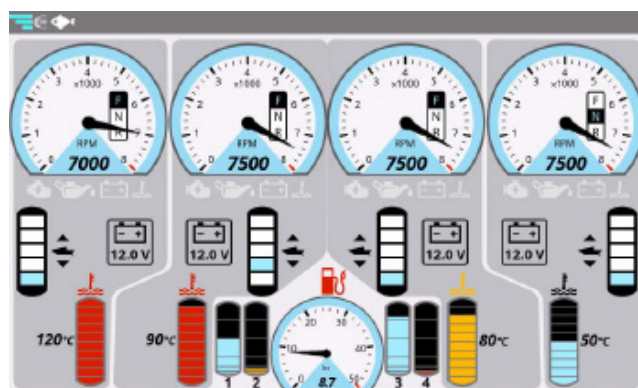
## Charts

As the FF-901 is compatible to run both Navionics and C-Map 4D and Max charts, you will experience the latest evolution of electronic charting technology and the ability to view charts in 2D or amazing 3D presentation with high-resolution satellite imagery. Try the Easy Routing and the Route Check to improve your routes.



# Engine

The plotter can be connected through CAN bus to compatible NMEA 2000 engine(s), to display engine state and performance. Depending on the number of engines, the 'Engine' page will look differently. For each engine detected, the page displays engine RPM gauge, engine temperature, fuel tanks, tilt/trim and alternator potential data.



# WiFi

You can connect your chart plotter to any available WiFi hotspot. The internet connection grants access to special features, such as Cloud Connectivity, Mirror Control and Radar.

Software updates come easy, thanks to the WiFi connectivity.

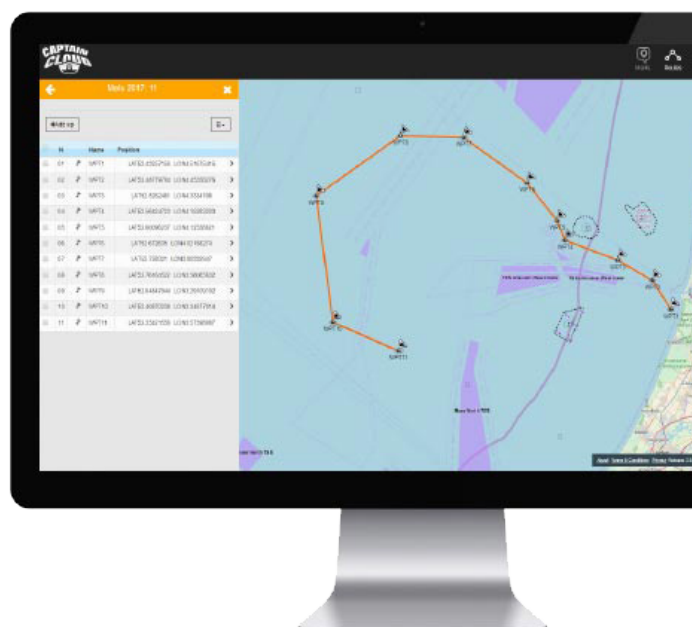
# Take control

What about duplicating your plotter on your tablet or phone? It's easy with the Mirror Control application. Establish a WiFi connection, you can use your Apple or Android tablet as a touchscreen chart plotter.

# Cloud connectivity

Synchronize your data with cloud connectivity and manage and save routes, tracks and marks from any connected device and store them safely in the cloud.

Build your favorite routes easily at home on your PC, tablet or smartphone, and find them ready on your chartplotter.





# NMEA

NMEA interface can transform your chart plotter in a multifunctional display to control your ais, autopilot, engine etc.

## NMEA2000 PGN list input

59392	127245	127508	129284	130310
59904	127250	128259	129285	130311
60160	127251	128267	129538	130312
60416	127257	128275	129540	130313
60928	127258	129025	129793	130314
65240	127488	129026	129794	130316
126208	127489	129029	129798	130576
126208	127493	129038	129808	130577
126208	127497	129039	129809	
126992	127498	129040	129810	
126996	127505	129041	130306	

## NMEA2000 PGN list output

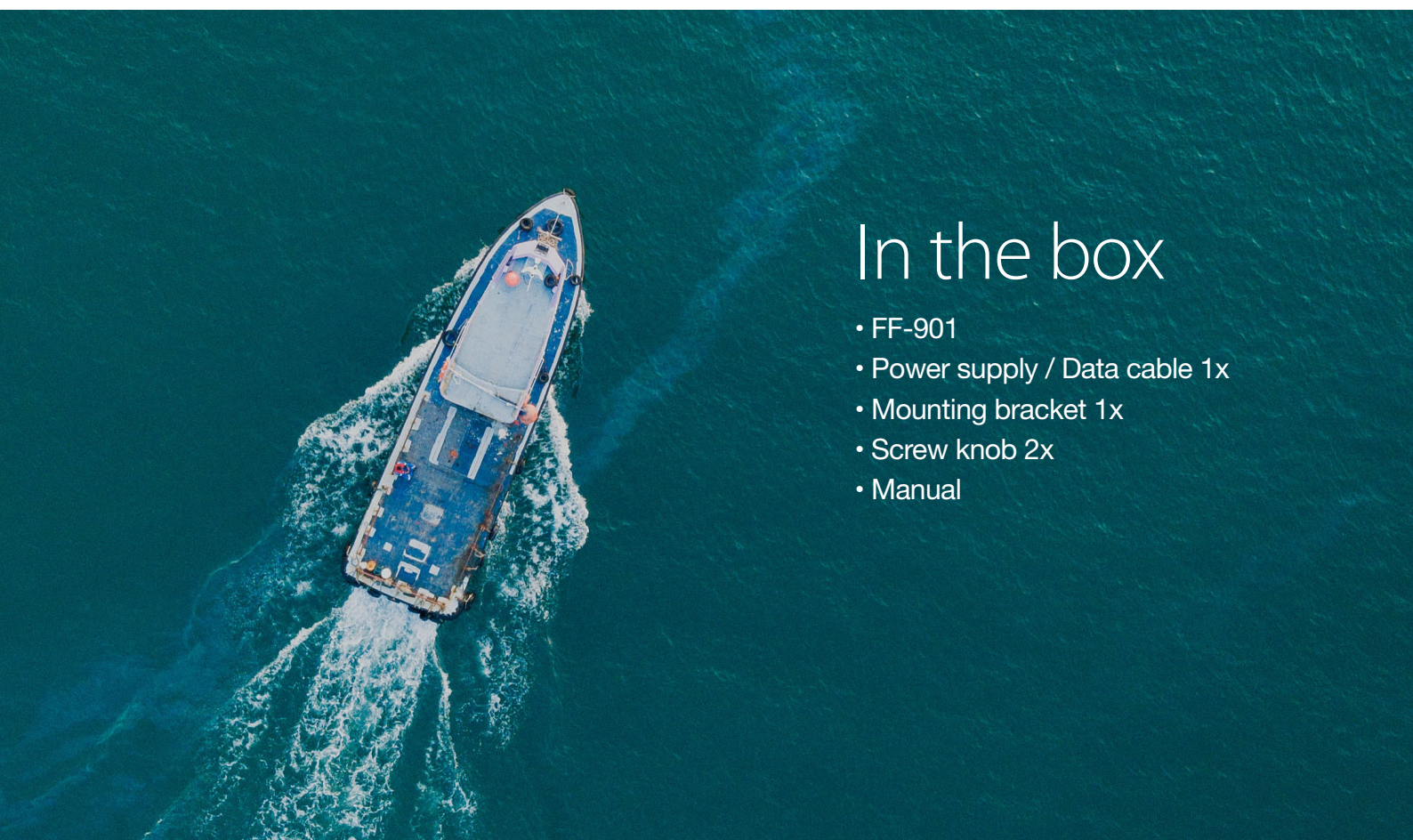
59392	126992	127258	129033
59904	126993	127505	129283
60928	126996	128259	129284
126208	126998	128267	129285
126208	127245	128275	130306
126208	127250	129025	130310
126464	127251	129026	130312
126464	127257	129029	130316

## NMEA0183 sentence list input

DBT	GNS	MWV	TLL
DPT	GSA	RMA	VDM
DSC	GSV	RMC	VDR
DSE	HDG	ROT	VHW
GGA	HDT	RSA	VTG
GLL	MTW	THS	ZDA

## NMEA0183 sentence list output

AAM	GLL	MWV	VDR
APB	GNS	RMA	VHW
BOD	GSA	RMB	VTG
BWR	GSV	RMC	WPL
DBT	HDG	RTE	XTE
DPT	HDT	THS	ZDA
GGA	MTW	TLL	



## In the box

- FF-901
- Power supply / Data cable 1x
- Mounting bracket 1x
- Screw knob 2x
- Manual

# Specifications

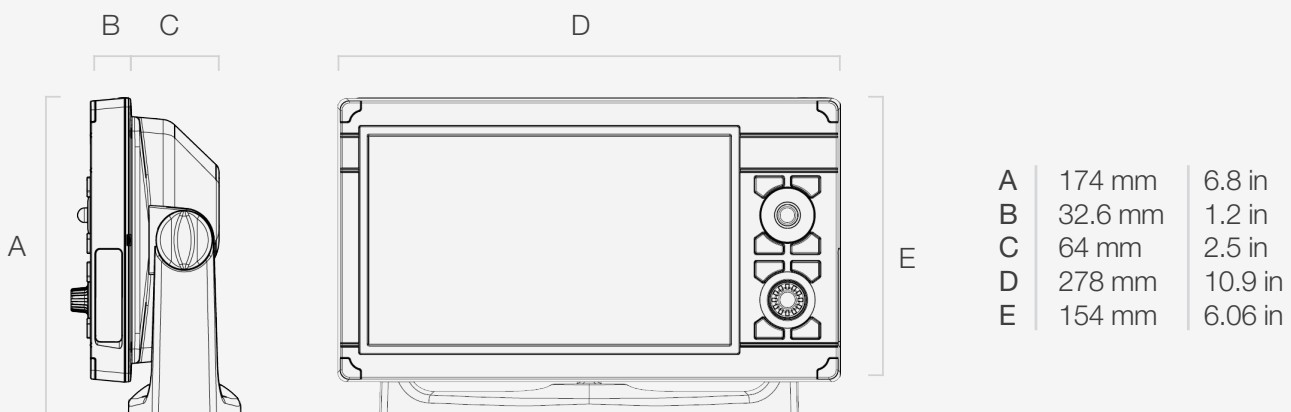
Display size	9"
Display resolution	800 x 480 px
Display brightness	1100 nits (dimnable)
Touch-screen	Yes, capacitive multitouch
Backlit keyboard	Yes
LCD type	TFT/Transmissive
Module size	214.48w x 131.44h x 7.05d (mm)
Active size	198 x 111.7(mm)
Pixel pitch	0.2208 x 0.2070 (mm)
Number of dots	800 x 3 (RGB) 480
Drive IC	HX8664-B + HX8264-E
Interface type	24 BIT RGB
Top polarizer type	Anti-glare
Recommended viewing direction	12
Gray scale inversion direction	6
Backlight type	30-LED white
Touch panel type	CTP
Built-in GPS sensor	10 Hz GPS/GLONASS
Receiving type	GPS 72 channels
Accuracy	2.5 m. CEP
External GPS connector	Yes
NMEA 2000	Yes
NMEA 0183	2x Rx/Tx on power cable
Memory slot	Micro SD
WiFi connectivity	Yes

Built-in Fish Finder CHIRP	Yes
Mounting options	Bracket, surface and flush mount
Waterproof	IPX6
Supply voltage	10-35 Vdc
Operating temperature	-10°C +60°C
Storage temperature	-20°C +80°C
Transmitting frequency range	2400 - 2483 MHz
Maximum transmitting power	100 mW
Maximum power consumption	25W
Transducer connector	Yes
Transducer	300 W or 600 W or 1kW (Transducer dependent)
Frequency	CHIRP: 40 to 250 kHz
	CW: 50/200 kHz
Marks	3000
Routes	1000, each having 50 waypoints at most
Trackpoints	30.000
Boundaries	1000, each having 50 vertices at most
Language	English (US & UK), Italian, Finnish, French, Spanish, Greek, Croatian, Turkish, Japanese, Chinese (Traditional & Simplified), Portuguese, Norwegian, Russian, Indonesian, German, Icelandic, Swedish.

## Tech Specs

9-inch display RoHS

FF-901 Weight 1.5 (3.31 lbs)





[jrc-europe.com](http://jrc-europe.com)

Head office

JRC/Alphatron Marine B.V.  
Schaardijk 23  
3063 NH Rotterdam  
The Netherlands  
+31 10 453 4000  
[www.jrc-europe.com](http://www.jrc-europe.com)

Worldwide

Belgium	Malaysia
Curaçao	The Netherlands
France	Poland
Germany	Singapore
Japan	Spain
Korea	USA