



ALPHATRON
Marine



Echosounder

JFC-180

Variable quad frequency in blackbox design

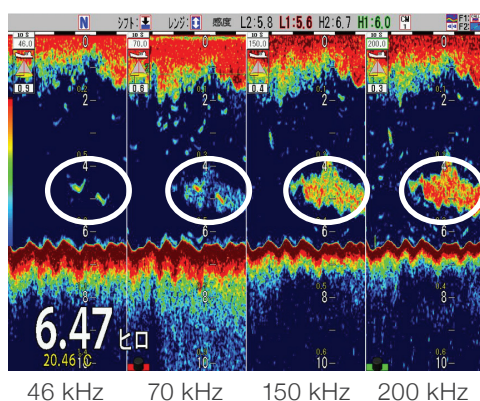
www.jrc.am

Advanced sounding

The JFC-180 is an innovative, blackbox echo sounder which is capable of displaying 4 different frequencies at the same time, providing the operator greatly enhanced fish detection. It is easier to differentiate between the various fish species, large shoals of fish and the seabed, resulting in better targeted catches and contributing to conservation of fish stocks.



- Advanced 3 kW transducer
- Black box design
- Dedicated keyboard
- XGA display resolution output
- Flexible interfacing
- Digital signal processing technology
- Simultaneous display of four frequencies
- One touch memory buttons
- Long range detection
- Energy saving mode



Quad frequency

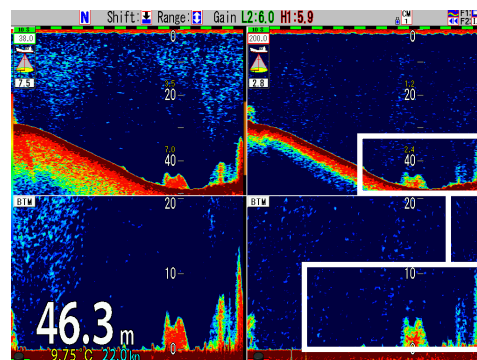
You can select four frequencies within the range of broadband transducer. Flexible selection of frequencies by 0.1 kHz step enables the user to stay away from interference with the sounders on other vessels.

Low frequency
38 to 75 kHz

High frequency
130 to 210 kHz

Zooming

Users can zoom by any range. After setting the zoom image, the normal image is indicated above and the zoomed image is displayed at the bottom part of the screen. The example on the right is focussed from the sea bottom, showing the depth upwards, which is especially useful for trawler vessels.



Languages

The JFC-180 allows the operator to switch between English, Japanese, Chinese, French, Greek, Italian, Korean, Spanish and Thai.

CM1	Low Frequency2	Low Frequency1	High Frequency2	High Frequency1
Standard	▶Normal	▶Normal	▶Normal	▶Normal
Echo Display	OFF	Mix	Mix	OFF
Frequency	33.0kHz	75.0kHz	130.0kHz	200.0kHz
Pulse Length	Short	Short	Short	Short
Band Width	▶Medium	▶Medium	▶Medium	▶Medium
	Long	Long	Long	Long
	Fixed	Fixed	Fixed	Fixed
	Narrow	Narrow	Narrow	Narrow
Zoom Display	▶Medium	▶Medium	▶Medium	▶Medium
	Wide	Wide	Wide	Wide
	Fixed	Fixed	Fixed	Fixed
	OFF	OFF	OFF	OFF
Gain	Bottom	Bottom	Bottom	Bottom
	B.D.	B.D.	B.D.	B.D.
	Zoom	Zoom	Zoom	Zoom
	B.Z.	B.Z.	B.Z.	B.Z.
Gain	▶Individual	▶Individual	▶Individual	▶Individual
	Synchronized	Synchronized	Synchronized	Synchronized
Guide	38.0 75.0 130.0 200.0			
ENT :Enter	SUBMENU:Return			
▲▼◀▶:Cursor	MENU :End			

Settings

With the Conditional Memory (CM) keys you can personalize and set your preferred display mode. A professional user can set up to 4 different frequencies at the same time, type of echo display, pulse length, bandwidth zoom display and gain. Novice operators can select from many auto functions such as range, shift, gain, transmit power and white line.

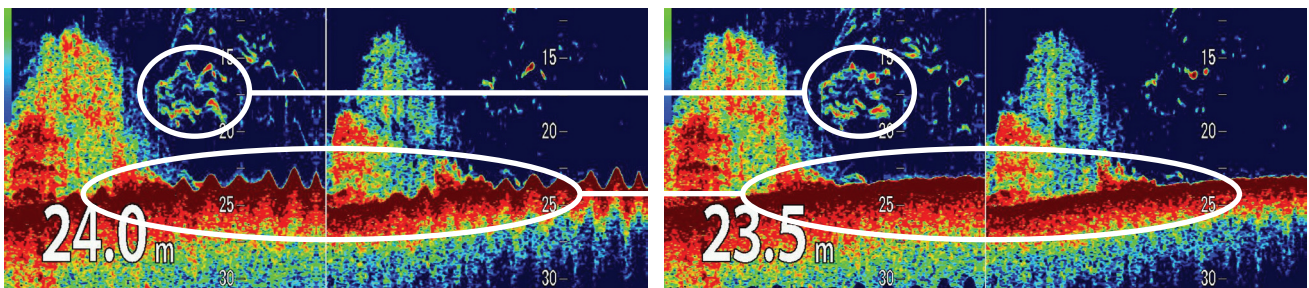
Keyboard

The color backlit keyboard makes operating the echo sounder easy and straightforward. A USB and SD card slot at the side of the keyboard allows saving images (screenshots), waypoints and backing up your settings.



Heave compensation

In rough ocean conditions with high waves, the JFC-180 can correct the up and down (attitude) movement. This function is standard available but requires an external connection to for example the JRC GPS compass (JLR-21). This is especially useful for fishing vessels where high waves can be compensated to accurately display the depth of the fish echo or to even the sea bottom.



In the box

- Transducer
- Processor unit
- Keyboard
- Junction box
- Power cable
- Spare parts
- Manual (English)

Accessories

- Power supply
- Transducer extension
- Transmission filter
- Various cables/connectors

Tech Specs

Output power	3 kW
Output frequency	38 to 75 kHz and 130 to 210 kHz
Output method	Single or alternating
Transmit rate	Up to 3000/min
Display output	XGA (1024 by 768 pixels)
NMEA ports	1 input and 1 output
Power supply	21.6 to 31.2V DC
Power consumption	50W or less



Marine Electronics &
Satellite Communications
www.mackaymarine.com

Mackay Marine – High Seas
+1 281 479 1515 marinesales@mackaymarine.com

Mackay Communications, Satellite Solutions
+1 919 850 3100 satserv@mackaycomm.com

Mackay Marine Canada
+1 902 469 8480 sales.canada@mackaymarine.com

Mackay Marine Alaska & Pacific Northwest
NWsales@mackaymarine.com Ballard/SEA, WA +1 206 282 8080
Dutch Harbor, AK +1 253 922 6260



www.jrc.am

Centers of Excellence
Houston, Rotterdam, Singapore, Tokyo