

# SKIPPER

# ESN200

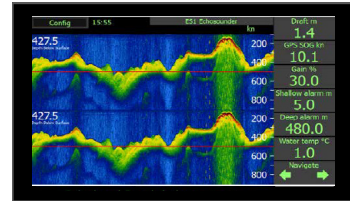
## Navigation Echo Sounder

### Specifications

<b>Channels</b>	Dual channel echo sounder
<b>Transducer connectors:</b>	2 Transducer connectors in Electronic / transceiver unit.
<b>Frequencies</b>	7 set delectable frequencies 24kHz, 30kHz, 33kHz, 38kHz, 50kHz, 100kHz and 200 kHz
<b>Power Supply</b>	DC: 20 - 32 V and/or 115/230VAC
<b>Power Consumption</b>	Display unit. Nominal 6W Electronic unit 20W
<b>Display ESN200-SB</b>	9" Resistive touch. 400NITS Dimensions: 242 x 158mm Weight: 1.1kg 1 x LAN 2 x NMEA 0183 Outputs (IEC61162-1) 3 x NMEA 0183 Inputs (IEC61162-1)
<b>Electronic unit JB70E2-SA</b>	Dimension: 115x115x180mm Weight: 1.5kg 2 x LAN (IEC61162-450) 5 x NMEA 0183 Outputs (IEC61162-1) 3 x NMEA 0183 Inputs (IEC61162-1) 1 x AUX in 2 x AUX out 1 x Relay out
<b>Ranges</b>	Selectable from 0 - 5 m to 0 - 5000 m
<b>Wheelmark approved SKIPPER transducers with expected depth limits</b>	50/200kHz ETS50200T/G. Max Power 60%. 1m - 450m 200kHz ETN200T Max Power 100% 1m - 350m 200kHz ETN200ST/G: Max power 70% 1m - 200m 50kHz ETN050T/G: Max power 70% 1.5m - 500m 38kHz ETN038T/G: Max power 100% 2 m - 1200m
<b>Non wheelmark approved SKIPPER transducers expected limit</b>	24kHz ETN024T/G: Max power 100% 2m - 2100m
<b>Measuring Accuracy</b>	1-10m: Accuracy 0.1m Resolution=0.1m 10m-100m Accuracy 1% Resolution 0.1m 100m-5000m: Accuracy 1%. Resolution Display=1m NMEA=0.1m
<b>Output power</b>	Nominal 700W. Max >1000W
<b>User functions</b>	Auto mode (for all settings) Manual control: SNR, Gain, Power, TVG, Frequency Transducer setup by part number Diagnostic screens / BIT Dimming (remote or local)
<b>Print/Archive function</b>	Printers: By use of EPSON 350, OKI 280Eco, OKI Microline ML1190eco. Text printer EPSON TM-T20III (USB) Network printers / Review: Service software via LAN Extended Internal Logging, by USB or SD
<b>Depth alarms</b>	BAM compatible (IEC62923) ALF or ALR. Internal sounder. Relay output and AUX in/out
<b>Options</b>	IR31Dim Remote/Automatic dimming unit CD401MR-SB Multi-repeater ESN200-SB Extra Displays Code AC-G001 Synch functions Code AC-G002 GPS printer function
<b>Classification</b>	MED B approved

### Overview

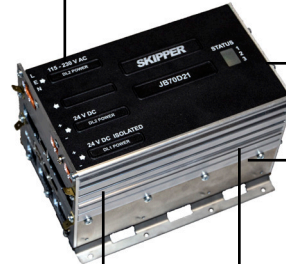
Display unit ESN200-SB



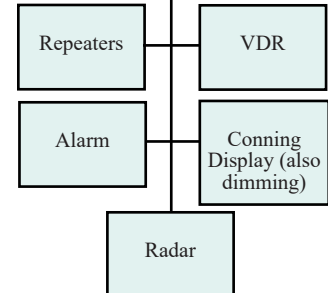
24 V DC

LAN communication with Display  
(Multiple displays available)

Electronic / Transceiver unit  
JB70E2-SA



24 V DC - 115/230VAC



Options for tank,  
sea valve (single and double hull)  
and retrofit.



Marine Electronics &  
Satellite Communications  
[www.mackaymarine.com](http://www.mackaymarine.com)

**Mackay Marine – High Seas**

+1 281 479 1515 [marinesales@mackaymarine.com](mailto:marinesales@mackaymarine.com)

**Mackay Communications, Satellite Solutions**

+1 919 850 3100 [satserv@mackaycomm.com](mailto:satserv@mackaycomm.com)

**Mackay Marine Canada**

+1 902 469 8480 [sales.canada@mackaymarine.com](mailto:sales.canada@mackaymarine.com)

**Mackay Marine Alaska & Pacific Northwest**

NWsales@mackaymarine.com Ballard/SEA, WA +1 206 282 8080  
Dutch Harbor, AK +1 253 922 6260