

PROVEN OIL MIST DETECTION USING VIDEO ANALYTICS

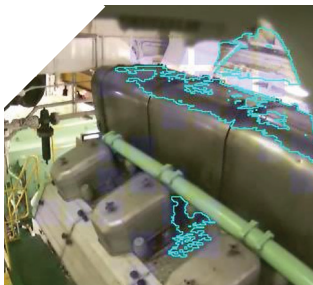


Oil mist is the most common cause of marine engine room fires and potentially the most devastating. Oil mist or spray is caused by minor leaks in pressurized fuel lines or when fuel makes contact with a hot surface and vaporizes.

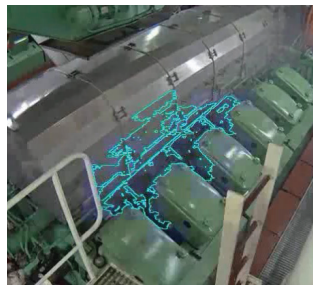
ACCORDING TO DET NORSKE VERITAS AND GERMANISCHER LLOYD STATISTICS:



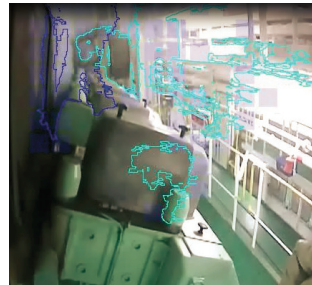
MORE THAN 60% OF ALL MARINE FIRES ARE INITIATED BY ENGINE HOT SPOTS



OVER 50% ARE CAUSED BY OIL LEAKAGE / MIST COMBUSTION



EARLY DETECTION ALLOWS FAST RESPONSE



INTRODUCING OBJECT RECOGNITION



Effective oil mist detection with live video verification can provide early warning and allow quick response to avoid fire or explosion.

However, previous oil mist detection devices have several disadvantages, including: difficulty in placing/installing detectors, detection sensitivity issues and filters requiring regular replacement.

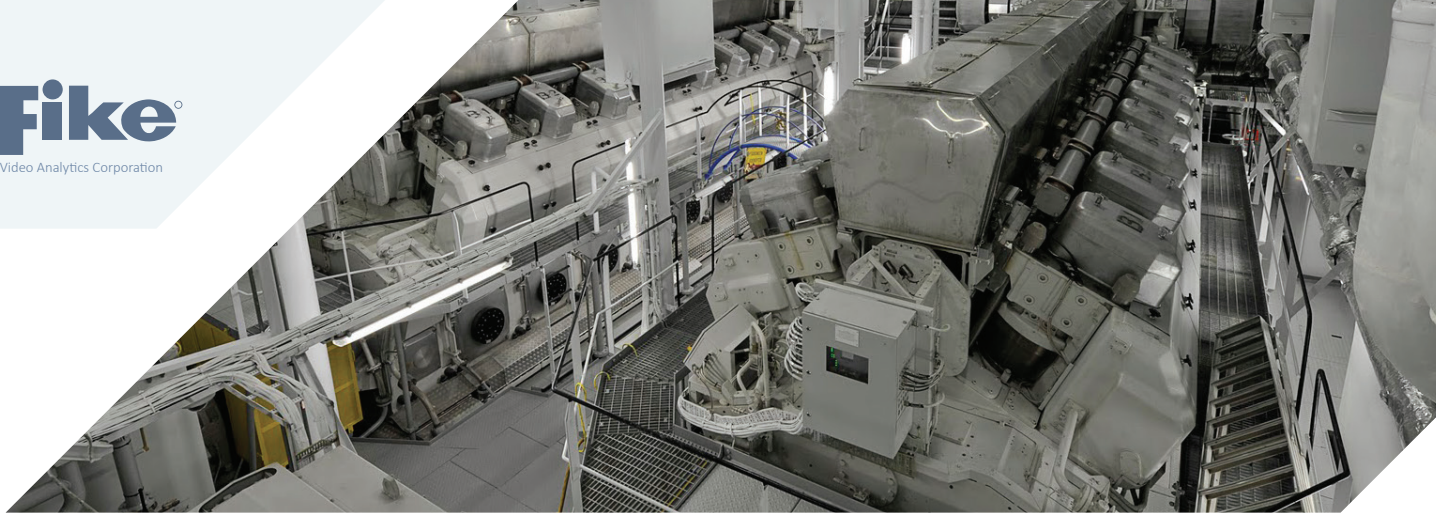
New, advanced video analytic technology overcomes these limitations and has proven to be a highly reliable solution when monitoring video from existing ONVIF compliant cameras.

Fike Video Analytics include object recognition combined with smoke detection to avoid false alarms and allow increased sensitivity. Human recognition is now included with all Fike Video Analytics Servers. For information regarding upgrading an existing system, please contact us at FikeVideoAnalytics@Fike.com

FOR MORE INFORMATION, EMAIL: FIKEVIDEOANALYTICS@FIKE.COM


Marine Electronics & Satellite Communications
www.mackaymarine.com

This document is only intended to be a guideline and is not applicable to all situations. Information subject to full disclaimer – <http://www.fike.com/disclaimer>



FIKE VIDEO ANALYTICS OIL MIST DETECTION

Fike Video Analytics utilizes video from standard network cameras to visually detect oil mist/spray and smoke in early stages and provides an alarm with live video feeds to the engine control room, bridge or other suitable onboard locations.

- Incorporates detection algorithms for oil mist/spray, smoke, flame, reflected light and motion
- Algorithms, used independently or in combination, can be configured with detection/blocking zones, sensitivities, time delays, to reduce false alarms and target specific areas for detection
- A few cameras can cover a wide area, or complex environments typical of engine rooms
- Recorded video for post-incident analysis or feed to security CCTV systems

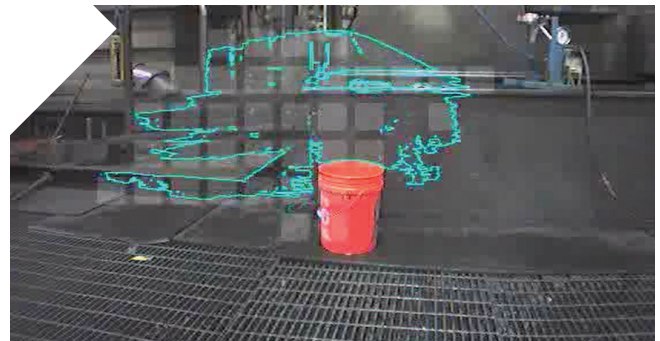
FIKE VIDEO MANAGEMENT SOFTWARE



Fike Video Management Software is used for detection configuration and simplifies annual testing using computer based software routines.

- View/record/playback alarm event
- Remote Internet monitoring
- View/manage system audible voice warning
- Coordinate response efforts

EQUIPMENT SURVEILLANCE COVERAGE



- Diesel generators and diesel propulsion engines
- Boilers – front/burner
- Incinerator room burners and silos
- Purifiers and fuel modules



Mackay Marine, Global Commercial Sales
+1 281 479 1515 marinesales@mackaymarine.com
Mackay Communications, Satellite Solutions
+1 919 850 3100 satserv@mackaycomm.com
Mackay World Service (MWS) 24/7
+1 282 478 6245 service@mackaymarine.com

Winner
The HPH Safety Award

