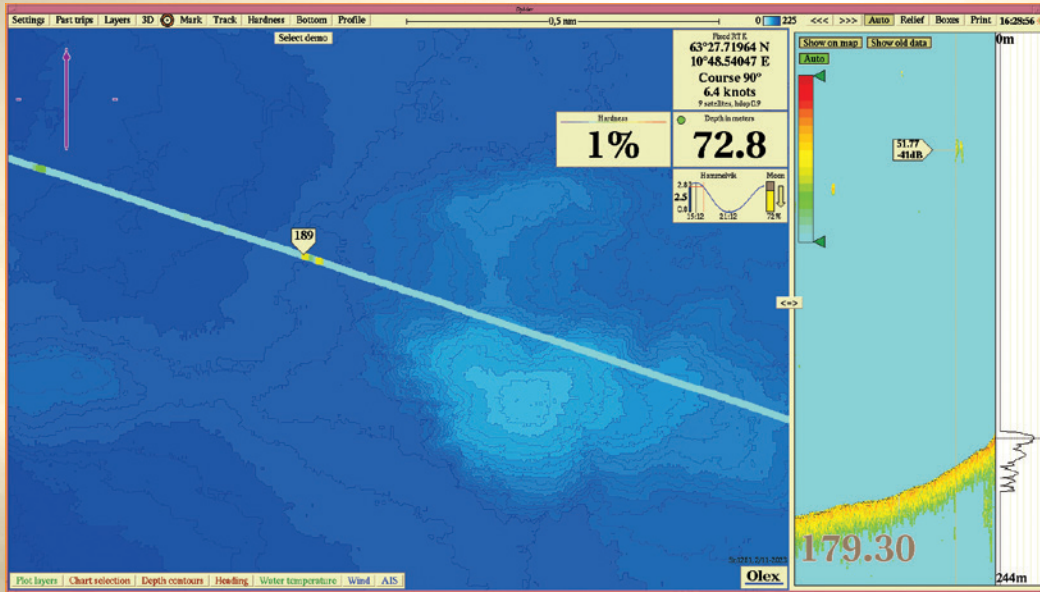


NEW

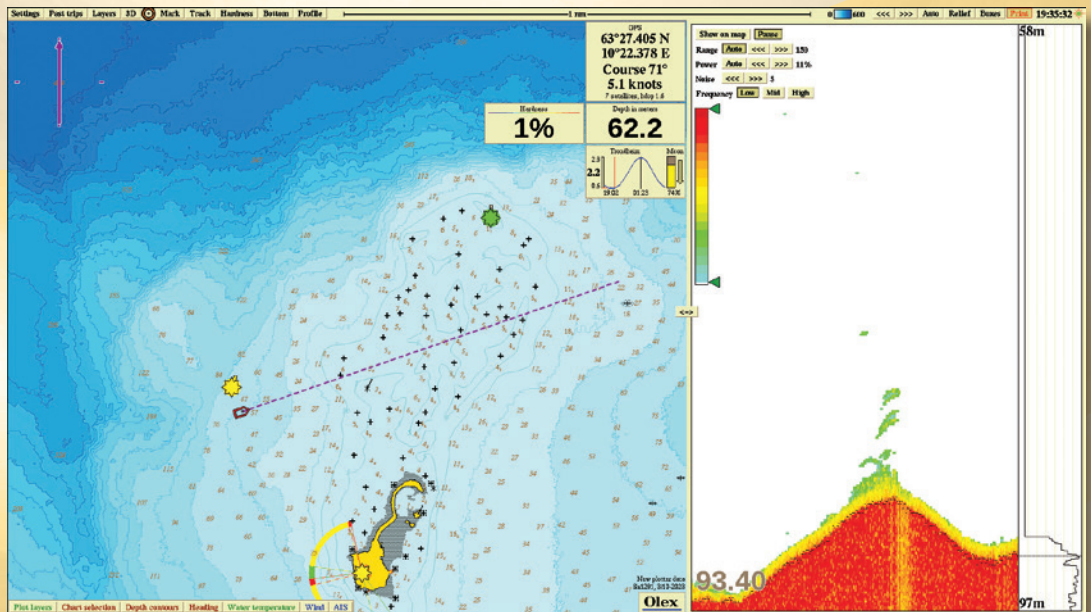
Olex

OS1 Sounder



- Maps fish target history
- Predict fish habitat
- Adjustable presentation

- **OS1** can use your existing transducer



rev 04/24.1

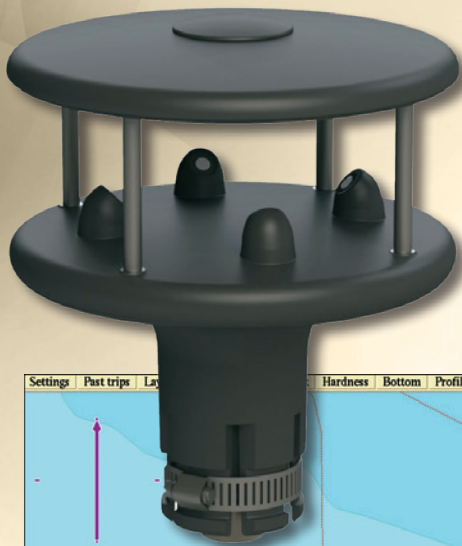
 **Mackay**
Mackay Marine Canada
www.mackaymarine.com

St. John's, NL 709.726.2422
Yarmouth, NS 902.742.3423
Halifax, NS 902.468.8480
sales.canada@mackaymarine.com

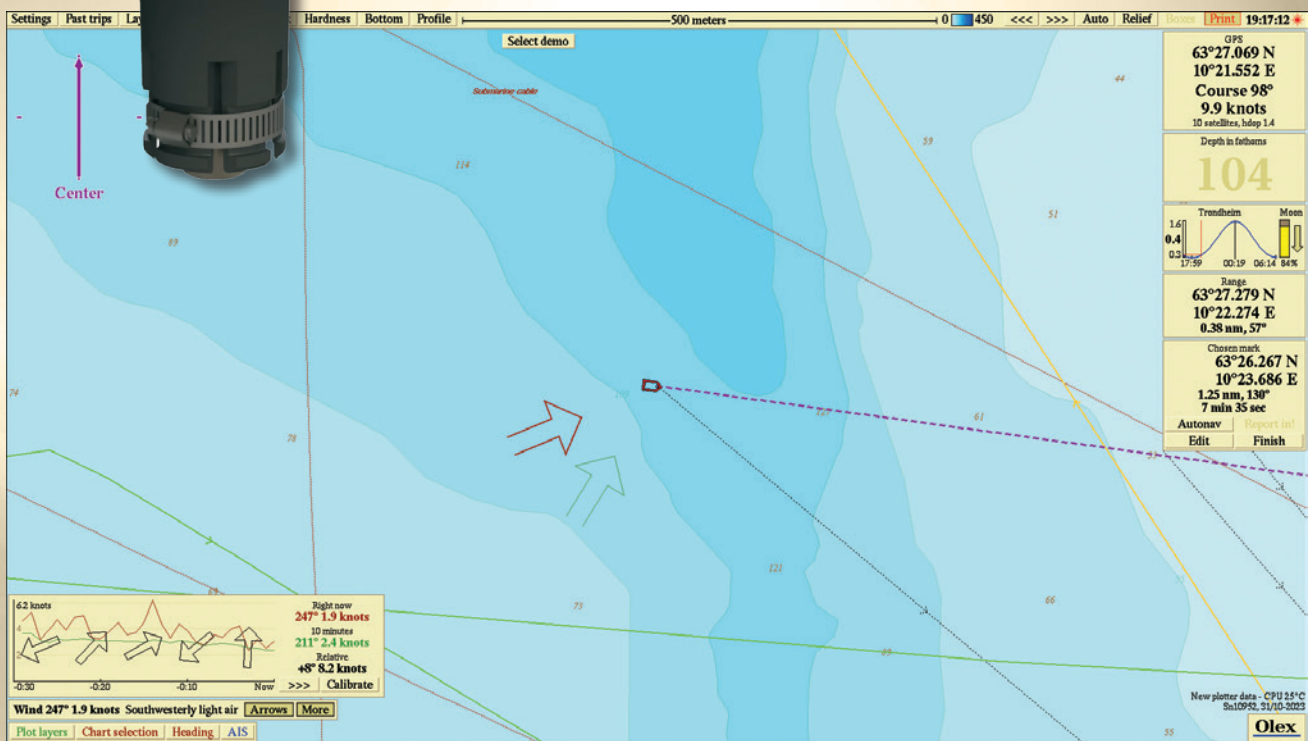
Barrington, NS 902.575.2025
Digby, NS 902.378.2062
Quebec City, QC 418.614.0782
Vancouver, BC 604.435.1455

Olex

Add Wind Speed & Direction to Olex



WindSonic™



Plot History to Help with Forecasting

- Wind Speed & Direction Sensor
- 0-60m/s (116 Knots) Wind Speed
- 0-360° Wind Direction
- NMEA Output
- Low Power Consumption
- Fast Start-up
- Solid-state Maintenance Free
- Corrosion Free

rev 04/24.1

 **Mackay**
Marine Electronics &
Satellite Communications
www.mackaymarine.com

ballard@mackaymarine.com
dutchharbor@mackaymarine.com
naknek@mackaymarine.com

+1 206 282 8080
+1 907 581 1679
+1 907 246 4493