

FURUNO

MU-DISPLAY series

MARINE DISPLAY

Model MU-150HD/152/190HD/190/190V/231/270W



www.furuno.com



Need a bright idea? How about using FURUNO marine grade monitors in your helm!

The FURUNO MU-Display series is a multi-purpose marine LCD that features the unmatched quality and reliability that you have learned to depend on.

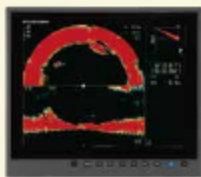
The MU-Display series employs bright color TFT LCDs with a special AR (anti-reflective) glass filter to cut down on annoying glare. With its bright colors, excellent contrast and wide viewing angles, the monitor is perfect for any tropical sunlight or low light conditions. Furthermore, the LCDs and the glass are bonded to ensure fog free operation on open fly-bridge installations*.

These units feature a wide range of interface options that include: RGB analog, DVI (Digital Video Interface) and composite video inputs.

These displays may be used as either the main or remote display for a variety of marine equipment such as BlackBox Radar, Sounder, Sonar and NavNet series. They can also be used for displaying images from security cameras, DVD player, computers, etc.

*for MU-150HD and MU-190HD

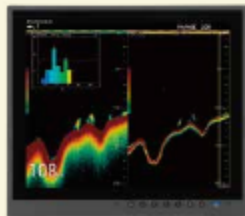
MU-DISPLAY series



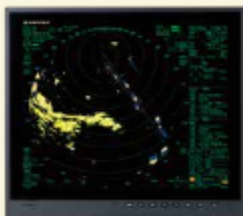
Model MU-150HD



Model MU-152



Model MU-190HD



Model MU-190



Crystal clear marine grade monitors for use as main or remote display

Bonded LCD provides clear view in any weather condition and avoids concerns such as dew condensation

Available in table top or flush mount (Mounting bracket is optional)

Automatic dimmer sensor adjusts the display brightness as lighting conditions change

Customizable input names for easy on-the-fly identification and switching between onboard Radar, Sonar, Sounder, Camera, etc.

Any of the composite inputs are PIP (Picture-In-Picture) capable, with adjustable size and screen location

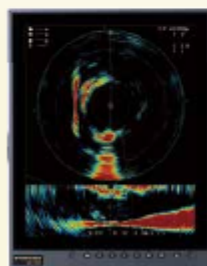
Power ON/OFF automatically by the DVI signal

1,000 cd/m² brightness provides superior visibility even in direct sunlight

Built-in scaler allows accepting up to various resolutions

Selectable inputs including RGB analog, DVI (Digital Video Interface) and Composite

	MU-150HD	MU-152	MU-190HD	MU-190	MU-190V	MU-231	MU-270W
Crystal clear marine grade monitors for use as main or remote display	✓	✓	✓	✓	✓	✓	✓
Bonded LCD provides clear view in any weather condition and avoids concerns such as dew condensation	✓	—	✓	—	—	—	—
Available in table top or flush mount (Mounting bracket is optional)	✓	✓	✓	✓	✓	✓	✓
Automatic dimmer sensor adjusts the display brightness as lighting conditions change	✓	✓	✓	✓	✓	✓	✓
Customizable input names for easy on-the-fly identification and switching between onboard Radar, Sonar, Sounder, Camera, etc.	✓	✓	✓	✓	✓	✓	✓
Any of the composite inputs are PIP (Picture-In-Picture) capable, with adjustable size and screen location	✓	✓	✓	✓	✓	✓	✓
Power ON/OFF automatically by the DVI signal	✓	✓	✓	✓	✓	✓	✓
1,000 cd/m ² brightness provides superior visibility even in direct sunlight	✓	—	✓	—	—	—	—
Built-in scaler allows accepting up to various resolutions	VGA to SXGA	VGA to SXGA	VGA to SXGA	VGA to SXGA	VGA to SXGA	VGA to UXGA	SVGA to WUXGA
Selectable inputs including RGB analog, DVI (Digital Video Interface) and Composite	✓	✓	✓	✓	✓	✓	✓



Model MU-190V



Model MU-231



Model MU-270W

Features

15"

XGA (1024 x 768)



XGA (1024 x 768)



Model MU-150HD



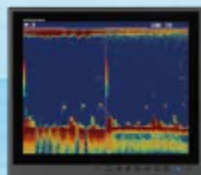
1000 cd/m²

Model MU-152

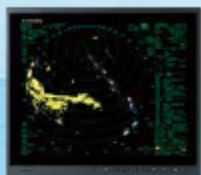


19"

SXGA (1280 x 1024)



SXGA (1280 x 1024)



Model MU-190HD



1000 cd/m²

Model MU-190

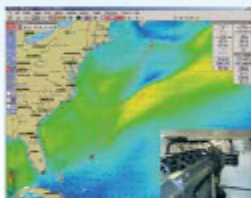


Picture In Picture (PIP)

: MU-150HD/152/190HD/190/190V/231/270W

Composite video (NTSC/PAL) input is available for displaying video images from an onboard TV/DVD player.

For MU-150HD/152/190HD with more than two Composite Video Inputs, the images in the PIP window automatically switch alternately.



Low power consumption

: MU-150HD/152/190HD/190/190V/231/270W

Utilizing the latest LED backlight, the MU-Display series delivers sharp, high quality images with bright colors and all at very low power consumption.

Waterproof : MU-150HD/152/190HD

The MU-150HD/152/190HD has a waterproof display and is built to stand up to tough marine conditions when mounted at fly bridge console.

The display can be rinsed in water for easy, worry-free cleaning.



Slim, lightweight and compact

: MU-150HD/152/190HD/190/190V/231/270W

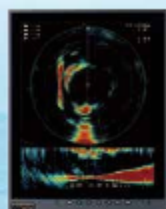
The MU-Display series is slim in depth, light weight and is so compact that it fits right into virtually any console.

It's space-saving design makes optimum use of your dashboard.



photo: MU-190HD/150HD

SXGA (1280 x 1024)



Model MU-190V



23.1"

UXGA (1600 x 1200)

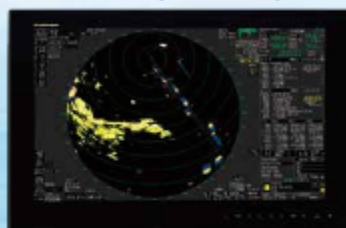


Model MU-231



27"

WUXGA (1920 x 1200)



Model MU-270W



Flush mounting

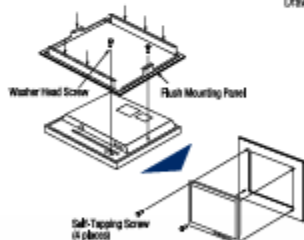
For space-saving installation and additional security, flush mount installation is available for all the MU-Display series. The display unit can be fixed from either front or rear with the flush mount kit for MU-150HD/152/190HD/190/190V/231/270W.



Flush mounting, fixed from front

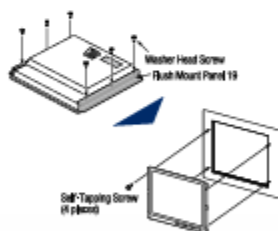
MU-150HD/152/190HD

Drawing: MU-150HD

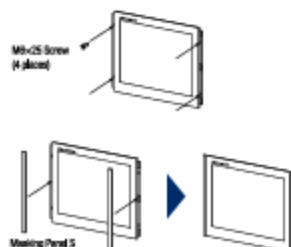


MU-190/231

Drawing: MU-190



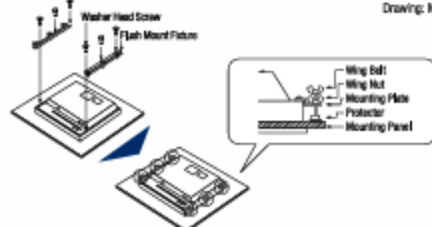
MU-270W



Flush mounting, fixed from rear*

MU-150HD/152/190HD/190/190V/231/270W

Drawing: MU-190



* Optional for MU-190/231/270W, standard for MU-150HD/152/190HD/190V

SPECIFICATIONS OF MU-DISPLAY series

DISPLAY CHARACTERISTICS	MU-150HD	MU-152	MU-190HD
Screen Size	15 inches, landscape	15 inches, landscape	19 inches, landscape
Resolution	XGA (1024 x 768)	XGA (1024 x 768)	SXGA (1280 x 1024)
Contrast Ratio (typical)	600 : 1	900 : 1	900 : 1
Viewing Angle (typical)	left/right and up/down: 80° or more		
Max Brightness (typical)	1000 cd/m ²	400 cd/m ²	1000 cd/m ²
INTERFACE			
Analog RGB (D-SUB/15 pins)	1 port	1 port	1 port
DVI (DVI-D)	2 ports	2 ports	2 ports
Composite Video (NTSC/PAL)	3 ports	3 ports	3 ports
Built-in Scaler	VGA to SXGA	VGA to SXGA	VGA to SXGA
POWER SUPPLY	12-24 VDC 2.8 - 1.4 A	12-24 VDC 1.9 - 0.9 A	12-24 VDC 8.4 - 3.9 A

ENVIRONMENT (IEC 60945 test method)

Temperature	-15°C to +55°C
Waterproofing	IP56 (CFR46, front panel), IP22 (rear panel)

EQUIPMENT LIST

Standard

1. Display Unit
2. Flush Mount Kit (for fixing at rear)
3. Installation Materials, Accessories and Spare Parts

Option

1. Cable Assembly
2. Bracket Assembly (w/knobs)
3. Hood Assembly
4. Flush Mount Kit (for fixing at front)

DISPLAY CHARACTERISTICS	MU-190V	MU-190	MU-231	MU-270W
Screen Size	19 inches, portrait	19 inches, landscape	23.1 inches, landscape	27 inches, landscape
Resolution	SXGA (1280 x 1024)	SXGA (1280 x 1024)	UXGA (1600 x 1200)	WUXGA (1920 x 1200)
Contrast Ratio (typical)	900 : 1	900 : 1	600 : 1	1500 : 1
Viewing Angle (typical)	left/right and up/down: 80° or more			left/right and up/down: 85° or more
Max Brightness (typical)	500 cd/m ²	450 cd/m ²	400 cd/m ²	400 cd/m ²
INTERFACE				
Analog RGB (D-SUB/15 pins)	1 port	1 port	1 port	1 port
DVI (DVI-D)	2 ports	2 ports	2 ports	2 ports
Composite Video (NTSC/PAL)	1 port	1 port	1 port	1 port
Built-in Scaler	VGA to SXGA	VGA to SXGA	VGA to UXGA	SVGA to WUXGA
POWER SUPPLY	12-24 VDC 5.0 - 2.5 A	100-230 VAC 0.7 - 0.4A	100-230 VAC 1.0 - 0.6 A	100-230 VAC 0.7 - 0.4 A

ENVIRONMENT (IEC 60945 test method)

Temperature	-15°C to +55°C
Waterproofing	IP22

EQUIPMENT LIST

Standard

1. Display Unit
2. Flush Mount Kit (for fixing at rear)
3. Installation Materials, Accessories and Spare Parts

Option

1. Cable Assembly
2. Bracket Assembly (w/knobs)
3. Hood Assembly

Standard

1. Display Unit
2. Flush Mount Kit (for fixing at front)
3. Installation Materials, Accessories and Spare Parts

Option

1. Cable Assembly
2. Bracket Assembly (w/knobs for MU-190)
3. Hood Assembly
4. Dust Cover
5. Flush Mount Kit (for fixing at rear)

Standard

1. Display Unit
2. Installation Materials, Accessories and Spare Parts

Option

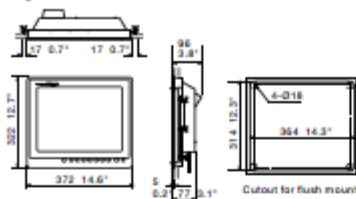
1. Cable Assembly
2. Bracket Assembly
3. Hood Assembly
4. Dust Cover
5. Flush mount Kit (for fixing at rear)

*MU-152/190/190V/231/270W cannot be installed outside.

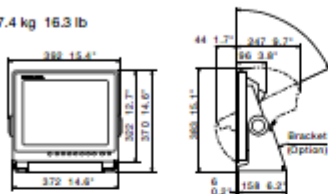
DIMENSIONS AND WEIGHT

MU-150HD

Flush Mount 5.4 kg 11.9 lb

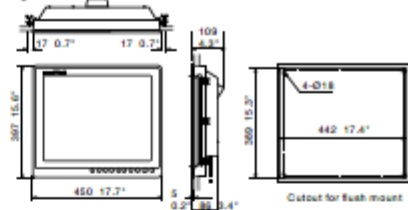


Bracket Mount 7.4 kg 16.3 lb

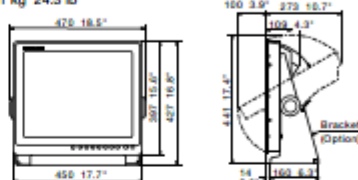


MU-190HD

Flush Mount 8.2 kg 18.1 lb

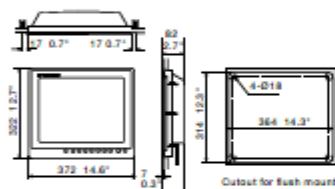


Bracket Mount 11 kg 24.3 lb

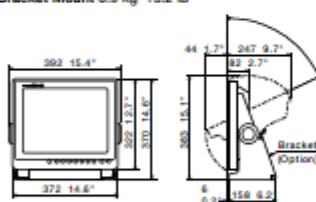


MU-152

Flush Mount 4.9 kg 10.8 lb

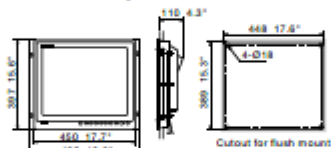


Bracket Mount 6.9 kg 15.2 lb

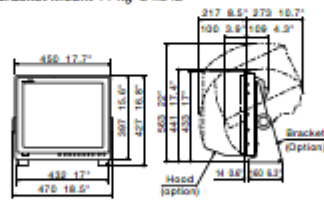


MU-190

Flush Mount 8.8 kg 19.4 lb

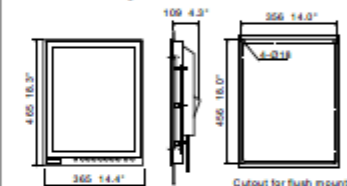


Bracket Mount 11 kg 24.3 lb

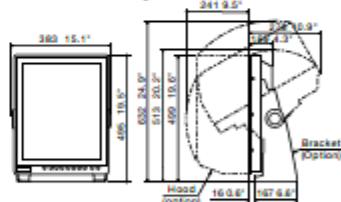


MU-190V

Flush Mount 8.0 kg 17.6 lb

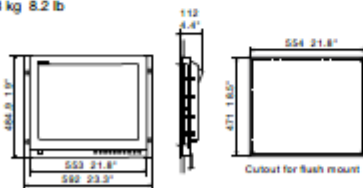


Bracket Mount 11.0 kg 24.3 lb

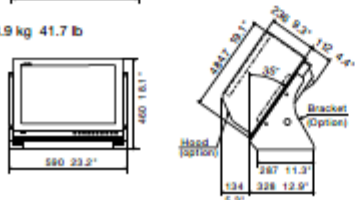


MU-231

Flush Mount 2.8 kg 8.2 lb

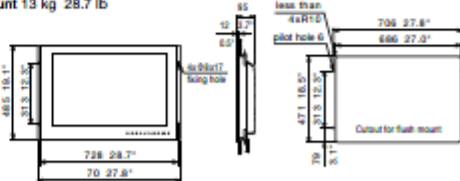


Bracket Mount 18.9 kg 41.7 lb

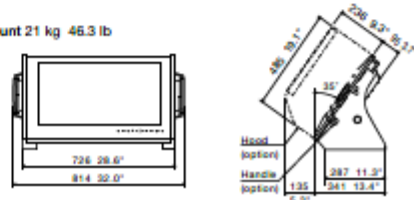


MU-270W

Flush Mount 13 kg 28.7 lb



Bracket Mount 21 kg 46.3 lb





Marine Electronics & Satellite Communications

www.mackaymarine.com

Mackay Marine – High Seas

+1 281 479 1515 marinesales@mackaymarine.com

Mackay Communications, Satellite Solutions

+1 919 850 3100 satserv@mackaycomm.com

Mackay Marine Canada

+1 902 469 8480 sales.canada@mackaymarine.com

Mackay Marine Alaska & Pacific Northwest

NWsales@mackaymarine.com Ballard/SEA, WA +1 206 282 8080

Dutch Harbor, AK +1 253 922 6260



www.furuno.com

Beware of similar products

All brand and product names are registered trademarks, trademarks or service marks of their respective holders.

SPECIFICATIONS SUBJECT TO CHANGE WITHOUT NOTICE

FURUNO ELECTRIC CO., LTD.
Japan | www.furuno.com
FURUNO U.S.A., INC.
U.S.A. | www.furunousa.com
FURUNO PANAMA S.A.
Republic of Panama | www.furuno.com/pan
FURUNO (UK) LIMITED
U.K. | www.furuno.co.uk
FURUNO NORGE A/S
Norway | www.furuno.no

FURUNO DANMARK A/S
Denmark | www.furuno.dk
FURUNO SVERIGE AB
Sweden | www.furuno.se
FURUNO FINLAND OY
Finland | www.furuno.fi
FURUNO POLSKA Sp. z o.o.
Poland | www.furuno.pl
FURUNO DEUTSCHLAND GmbH
Germany | www.furuno.de

FURUNO FRANCE S.A.S.
France | www.furuno.fr
FURUNO ESPAÑA S.A.
Spain | www.furuno.es
FURUNO ITALIA S.R.L.
Italy | www.furuno.it
FURUNO HELLAS S.A.
Greece | www.furuno.gr
FURUNO (CYPRUS) LTD
Cyprus | www.furuno.com/cy

FURUNO EURUS LLC
Russian Federation | www.furuno.ru
FURUNO SHANGHAI CO., LTD.
China | www.furuno.com/cn
FURUNO CHINA CO., LTD.
Hong Kong | www.furuno.com/hk
FURUNO SINGAPORE
Singapore | www.furuno.sg

PT FURUNO ELECTRIC INDONESIA
Indonesia | www.furuno.id

2-C-18031SS
Catalogue No. CA000001165