



LT-4100S GMDSS SATELLITE COMMUNICATIONS SYSTEM

IRIDIUM CERTUS® 100 MARITIME

designed and built for the demanding and rough environment at sea

IRIDIUM GMDSS

The LT-4100S GMDSS System is an Iridium satcom product supporting all GMDSS requirements for SOLAS vessels with 100% global coverage. The LT-4100S GMDSS System is fully compliant and tested towards the new GMDSS standard IEC 61097-16 (2019). The LT-4100S GMDSS System is MED / Wheelmark approved.

LT-4100S GMDSS IN SHORT

The LT-4100S GMDSS System is small and compact. No requirements for either message terminal or printer. The LT-4100S GMDSS System offers the Iridium GMDSS services, High quality Voice (2 channels), and IP Data. The built-in GNSS/GPS receiver supports tracking functionality and can output NMEA 0183 position data. The LT-4100S GMDSS System can interface to external BAM and ECDIS systems. The Antenna Unit can be installed up to 500 meters from the Control Unit.

- **100% global coverage**
- **Distress Alert & Distress Call**
- **Maritime Safety Information (MSI)**
- **BAM & ECDIS interface**
- **2 X Voice Channels (high-quality)**
- **IP-data: 22 kbps (up) / 88 kbps (down)**
- **IP-data management (configuration of outgoing firewall, port forwarding, etc.)**
- **Up to 500 m antenna cable**

PRODUCT DESCRIPTION



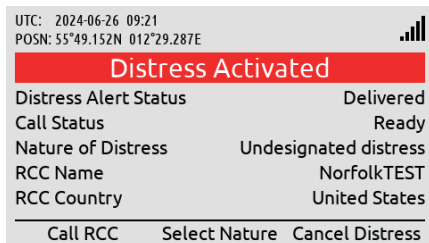
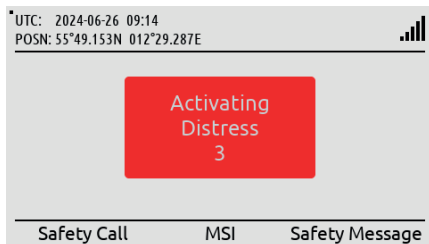
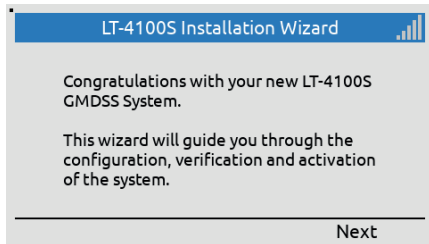
The standard LT-4100S GMDSS System is offered in a version that includes control unit & bracket mount, handset & cradle, antenna unit & power cable. The standard version fulfills all the GMDSS basic requirements. Additional services like SSAS, GMDSS Alarm Panels and printer, will require the LT-3140S Interface Unit.

INTERFACE UNIT

The LT-3140S Interface Unit supports:

- **3 x LT-3150S Alarm Panel**
- **1 x LT-3160S Printer Adapter**
- **3 x SSAS Alert button (coloured red)**
- **1 x SSAS Test button (coloured green)**
- **2 x RS-422 (BAM / MSI / GNSS)**
- **4 x Ethernet (LT-4110S CU, PC, future use)**





Installation Wizard

The installation and setup of the LT-4100S GMDSS system has been made user-friendly by adding an Installation Wizard that will guide you through the initial configuration and activation of the system on the Iridium GMDSS System (IGS).

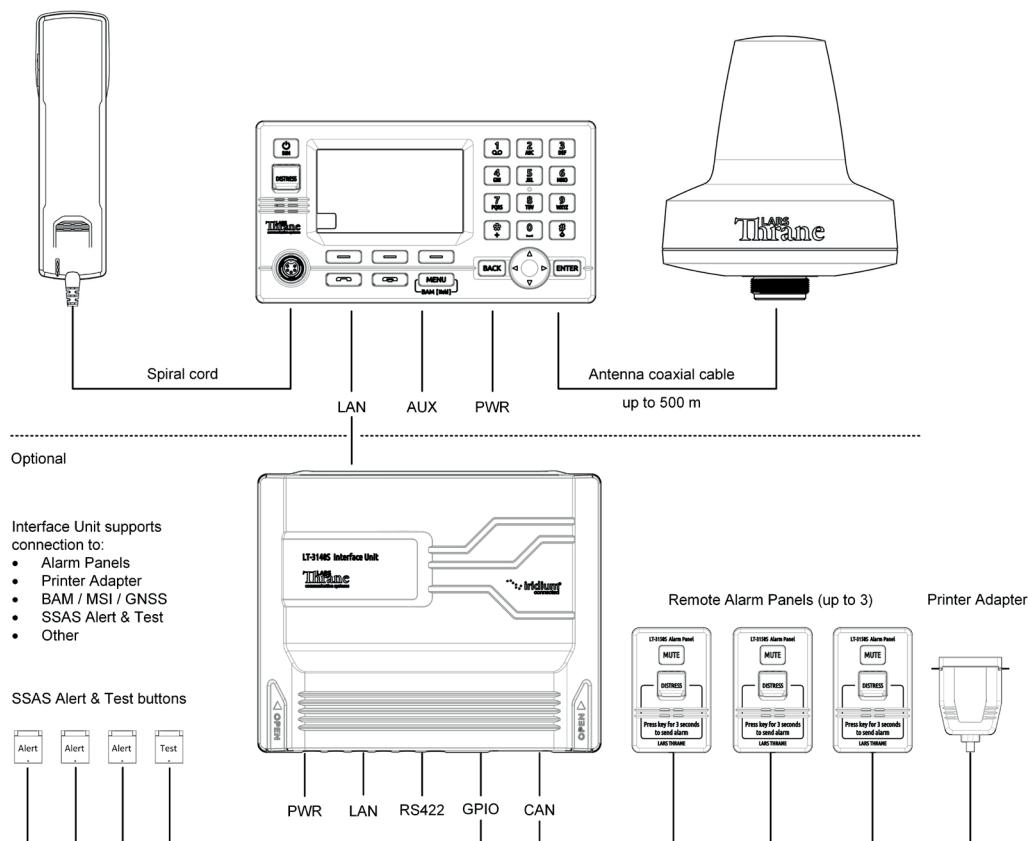
Activating Distress

Distress Alert can be activated by pushing the DISTRESS button on the front of the control unit. A Distress Alert message will be sent to the Iridium GMDSS System (IGS) and immediately forwarded to the Rescue Coordination Center (RCC).

Distress Call

The LT-4100S GMDSS System is supporting both Safety Calling (priority) and General Calling (non-priority). The terminal can be configured to automatically setup a Safety Voice call (priority: Distress) to the RCC, if the DISTRESS button has been activated.

SYSTEM CONFIGURATION



SPECIFICATIONS

LT-4100S GMDSS SATELLITE COMMUNICATIONS SYSTEM

| | |
|--|--|
| Certification & standards | Maritime CE, FCC, ISCED, RCM, RED, MED (Wheelmark), RoHS 2, Iridium® |
| Vibration, operational | IEC 60945 |
| Vibration, shock | Half sine 20 g/11 ms |
| Compass Safe Distance, std. | 0.3 - 1.4 m (1.0-4.6 ft) |
| Compass Safe Distance, steer. | 0.3 - 0.9 m (1.0 - 3.0 ft) |
| Power consumption: operating mode, max | 34 W |
| Power consumption: Idle | 12 W |
| BAM EUT function types | P |

LT-4110S Control Unit

| | |
|---------------------------|--|
| Weight | 0.67 kg (1.48 lbs) |
| Dimensions | 224.0 x 120.0 x 70.0 mm (8.82 x 4.72 x 2.76 in) |
| Temperature, operational | -15°C to +55°C (+5°F to +131°F) |
| IP rating, dust and water | IP32 |
| Interfaces | Ethernet, auxiliary, DC input, chassis ground Antenna Unit (N conn.), handset, SIM card |
| Input power | 12-24 VDC (2.0-1.0 A) |

LT-3120 Handset Unit

| | |
|---------------------------|--|
| Weight (handset + wire) | 0.30 kg (0.66 lbs) |
| Dimensions | 52.8 x 208.8 x 38.2 mm (2.08 x 8.22 x 1.50 in) |
| Temperature, operational | -15°C to +55°C (+5°F to +131°F) |
| IP rating, dust and water | IP32 |

LT-4130 Antenna Unit

| | |
|-----------------------------|--------------------------------------|
| Weight | 1.39 kg (3.05 lbs) |
| Dimensions | 182 x Ø 162 mm (7.16 x Ø 6.39 in) |
| Temperature, operational | -40°C to +55°C (-40°F to +131°F) |
| IP rating, dust and water | IP67 |
| Interfaces | Control Unit (N conn.) |
| Antenna communication cable | Coaxial cable, up to 500 m (1500 ft) |

LT-3140S Interface Unit

| | |
|---------------------------|---|
| Weight | 0.71 kg (1.57 lbs) |
| Temperature, operational | -15°C to +55°C (+5°F to +131°F) |
| IP rating, dust and water | IP20 |
| Interface | 4 x Ethernet, 2 x RS-422, 4 x GPIO, 4 x CAN, DC input, chassis ground |
| Input Voltage | 12-24 VDC (0.8-0.4 A) |

LT-3150S Alarm Panel

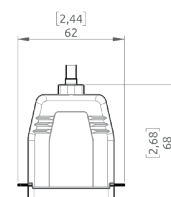
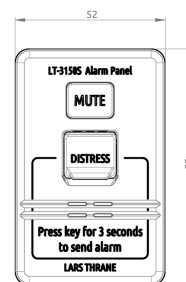
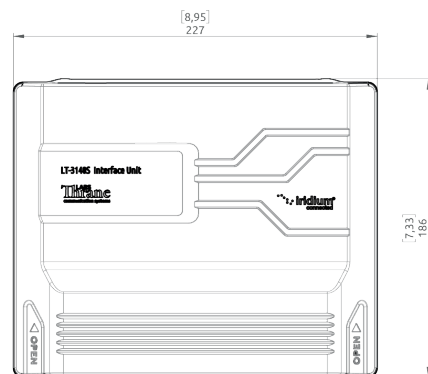
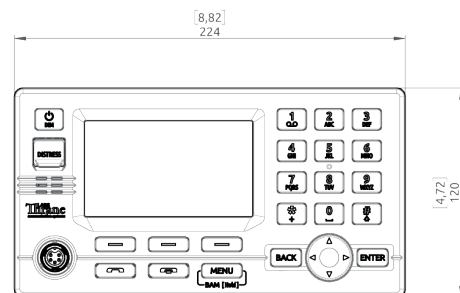
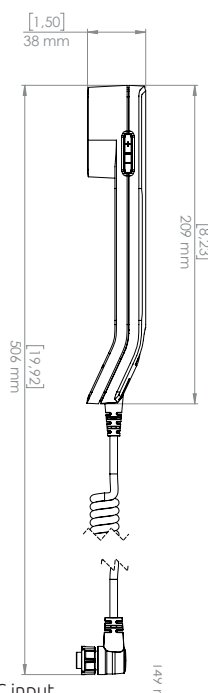
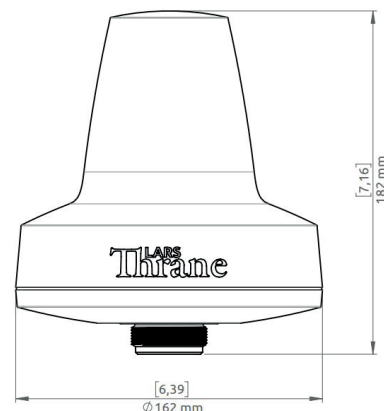
| | |
|---------------------------|--------------------------------------|
| Weight (incl. 25m cable) | 0.07 kg (0.15 lbs) / 1.29 (2.84 lbs) |
| Temperature, operational | -15°C to +55°C (+5°F to +131°F) |
| IP rating, dust and water | IP30 |
| Interface | CAN |
| Warranty | 2 year |
| Maintenance | None |

IN THE BOX

| | |
|---------------------------------|----------------|
| LT-4110S Control Unit | P/N: 51-104870 |
| LT-3120 Handset | P/N: 51-100988 |
| LT-3121 Cradle | P/N: 51-101181 |
| LT-4130 Antenna Unit (Maritime) | P/N: 51-102365 |
| Bracket Mount, Control Unit | P/N: 91-100771 |
| Power Cable, 3m | P/N: 91-102118 |
| User & Installation Manual | P/N: 95-104951 |

ACCESSORIES

| | |
|--|----------------|
| Flush Mount, Control Unit | P/N: 91-100772 |
| Pole Mount (1.5" pipe, 38.8mm), Antenna Unit | P/N: 91-100774 |
| Pole Mount (2.0" pipe, 53.0mm), Antenna Unit | P/N: 91-102550 |
| Auxiliary Cable, 3m | P/N: 91-100768 |
| Coaxial Cable Ø10.3mm (up to 500m) | |
| Crimping Tool for Coaxial Cable Ø10.3mm | |



Lars Thrane A/S
Skovlytoften 33
DK-2840 Holte
Denmark

Phone: +45 88 30 10 00
Fax: +45 88 30 10 09
Email: sales@thrane.eu

CVR DK-36042443
www.thrane.eu